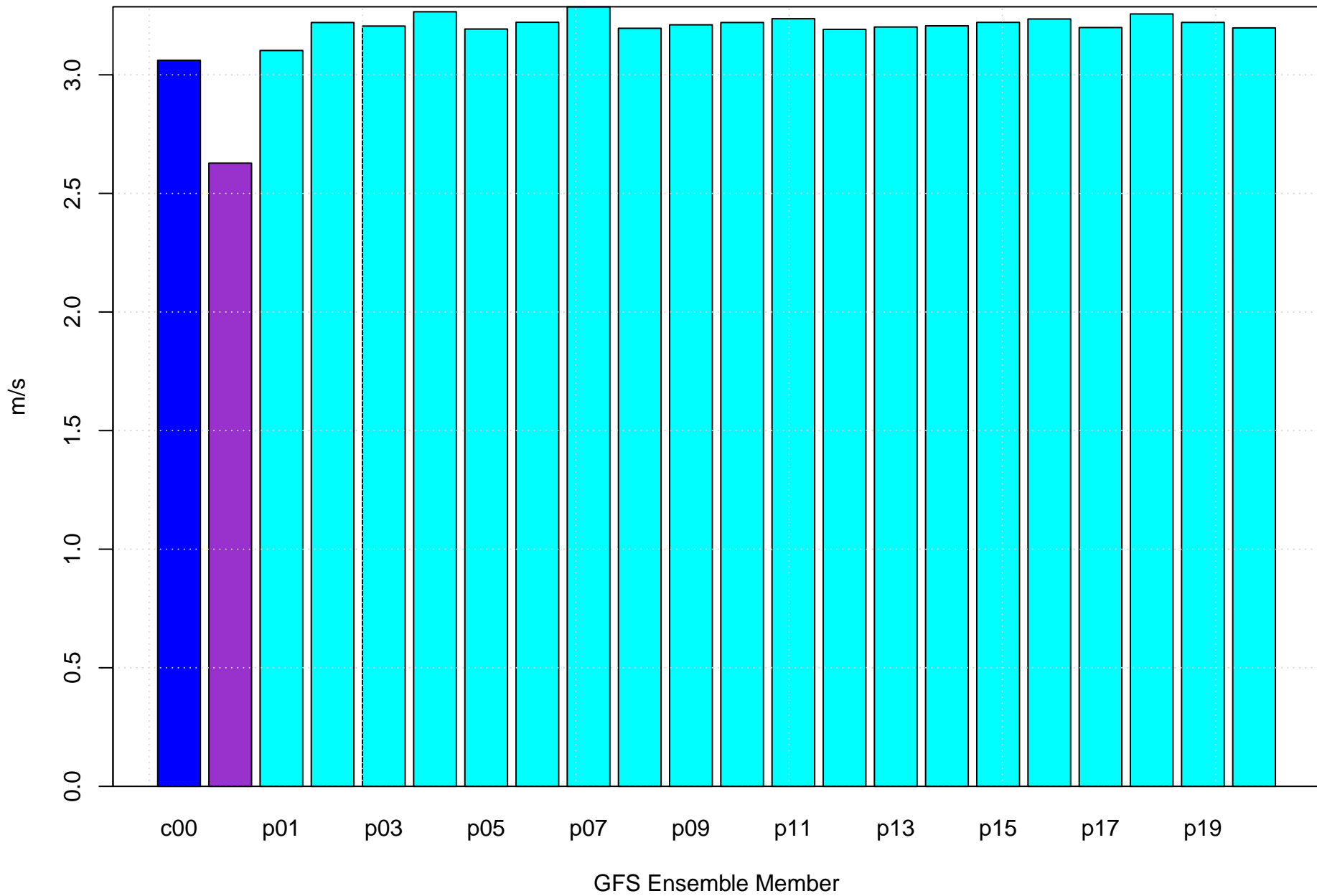
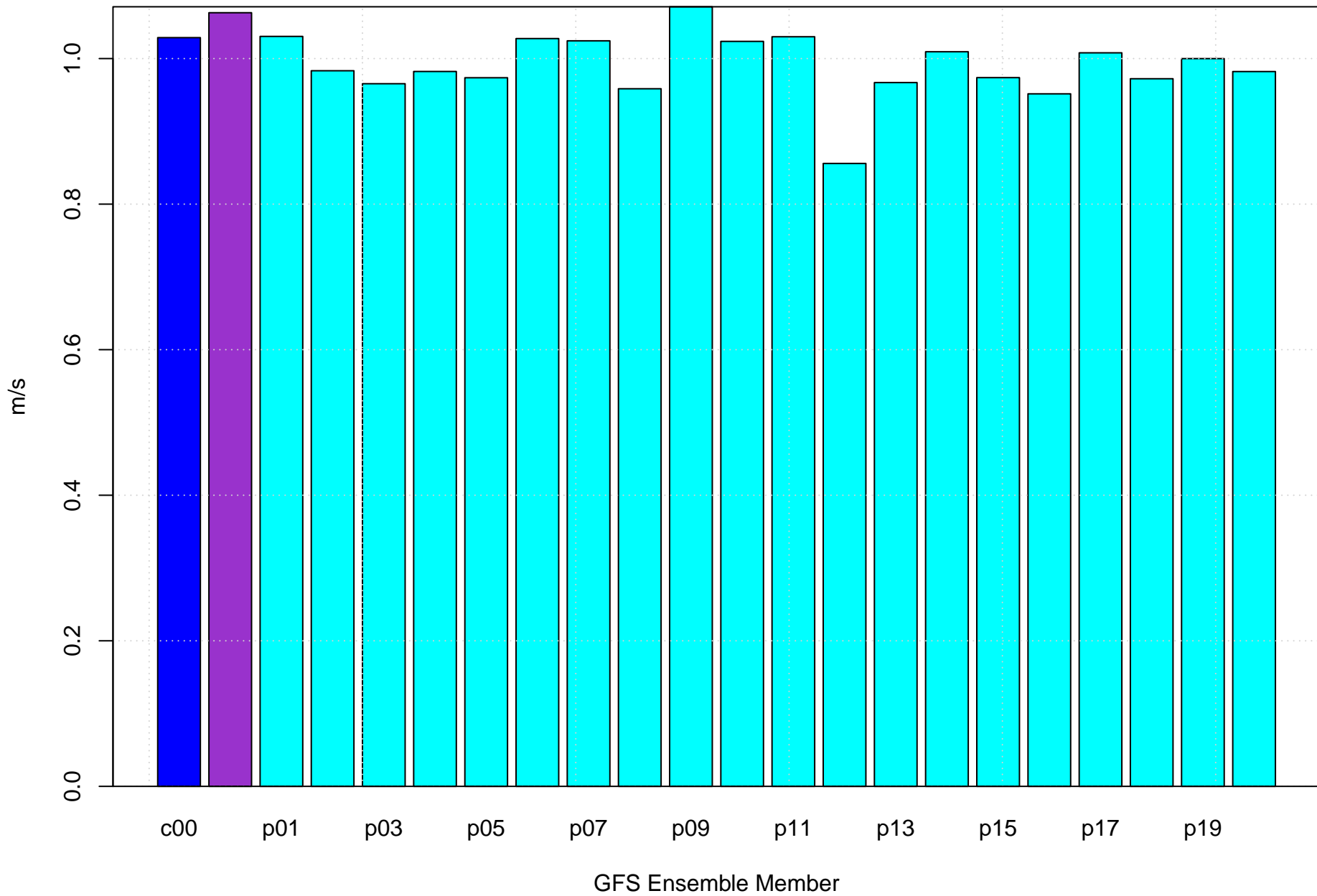


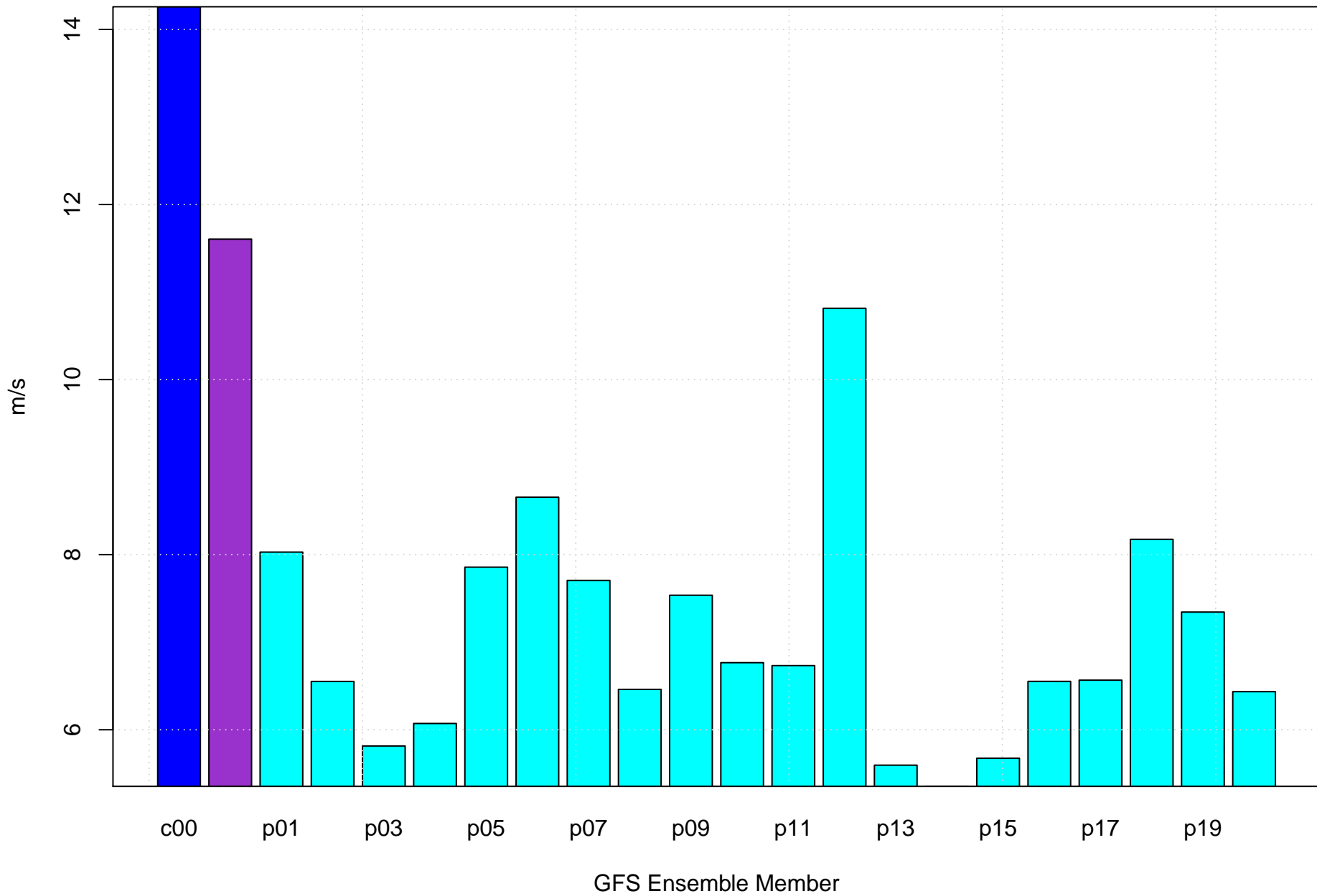
# Mean vector surface wind error KHRO



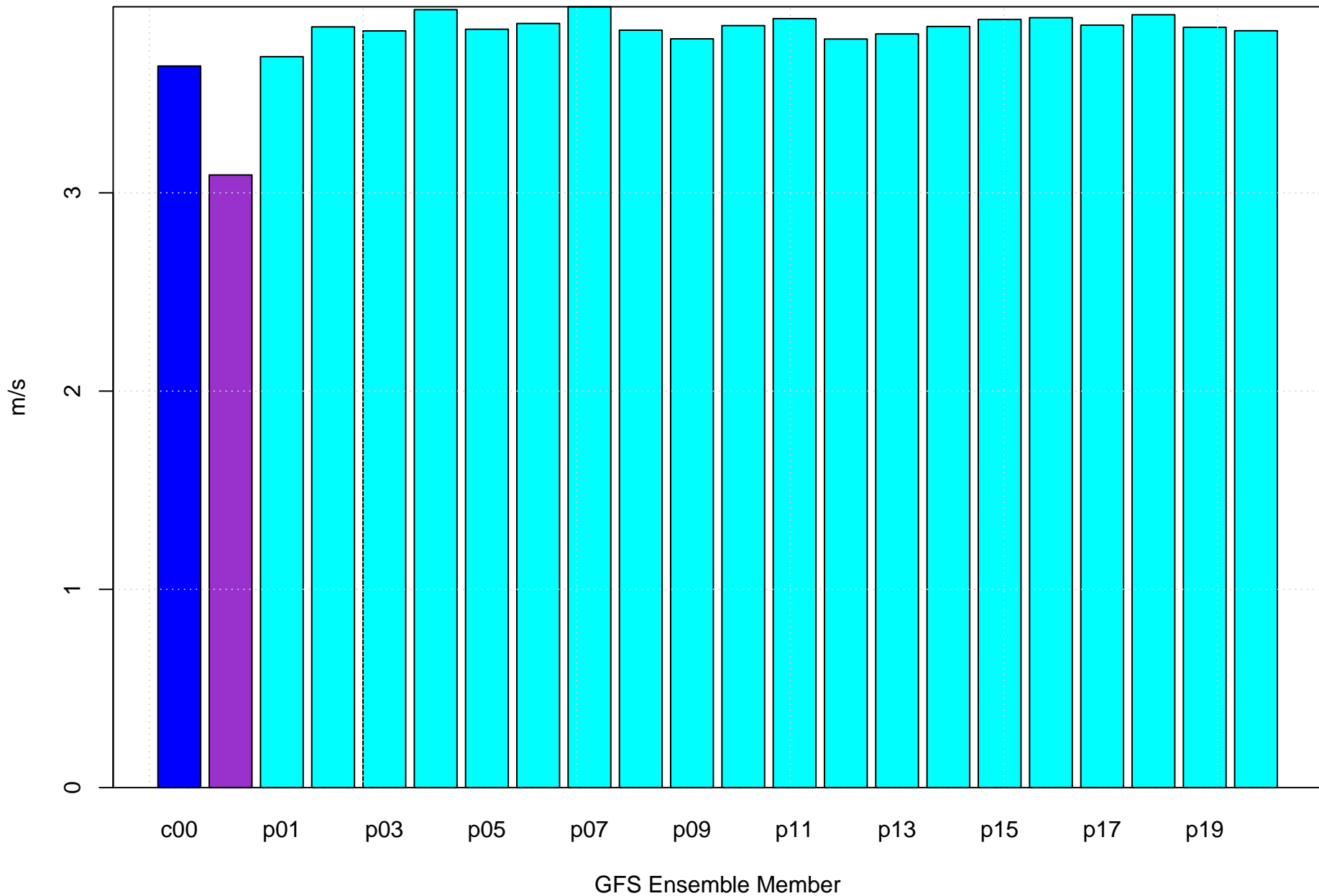
# Surface wind speed bias KHRO



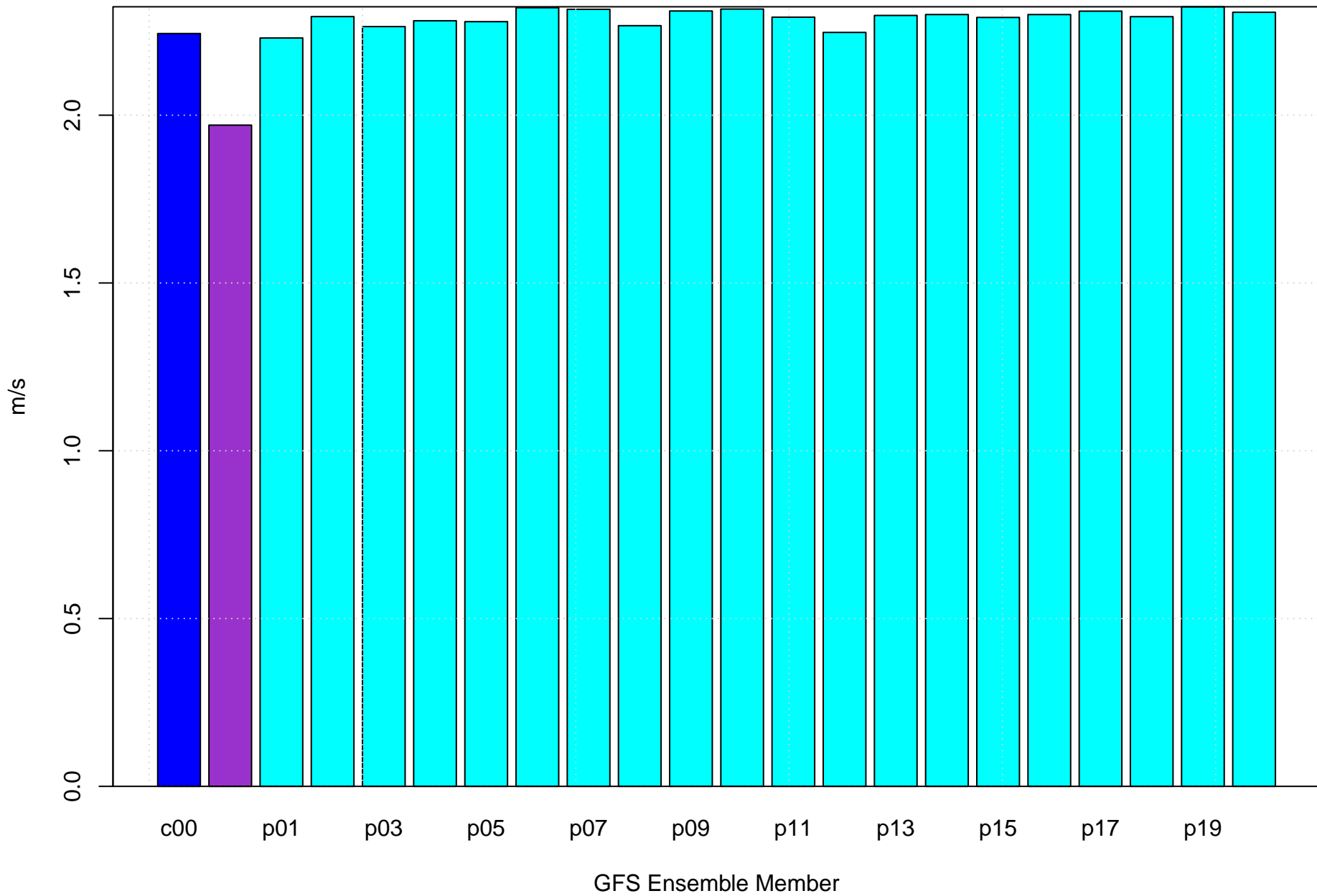
# Surface direction bias KHRO



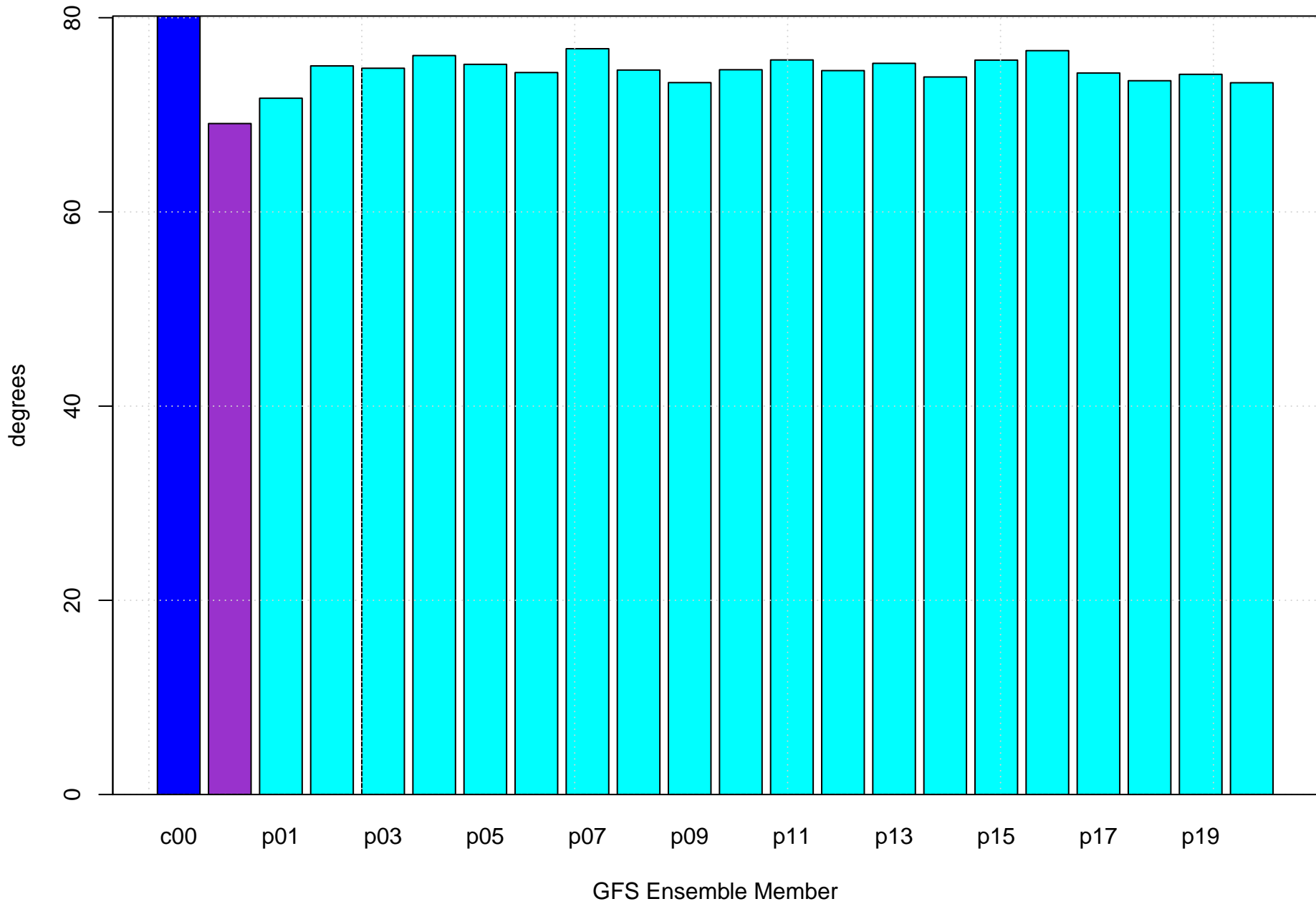
# Surface vector wind vector RMSE KHRO



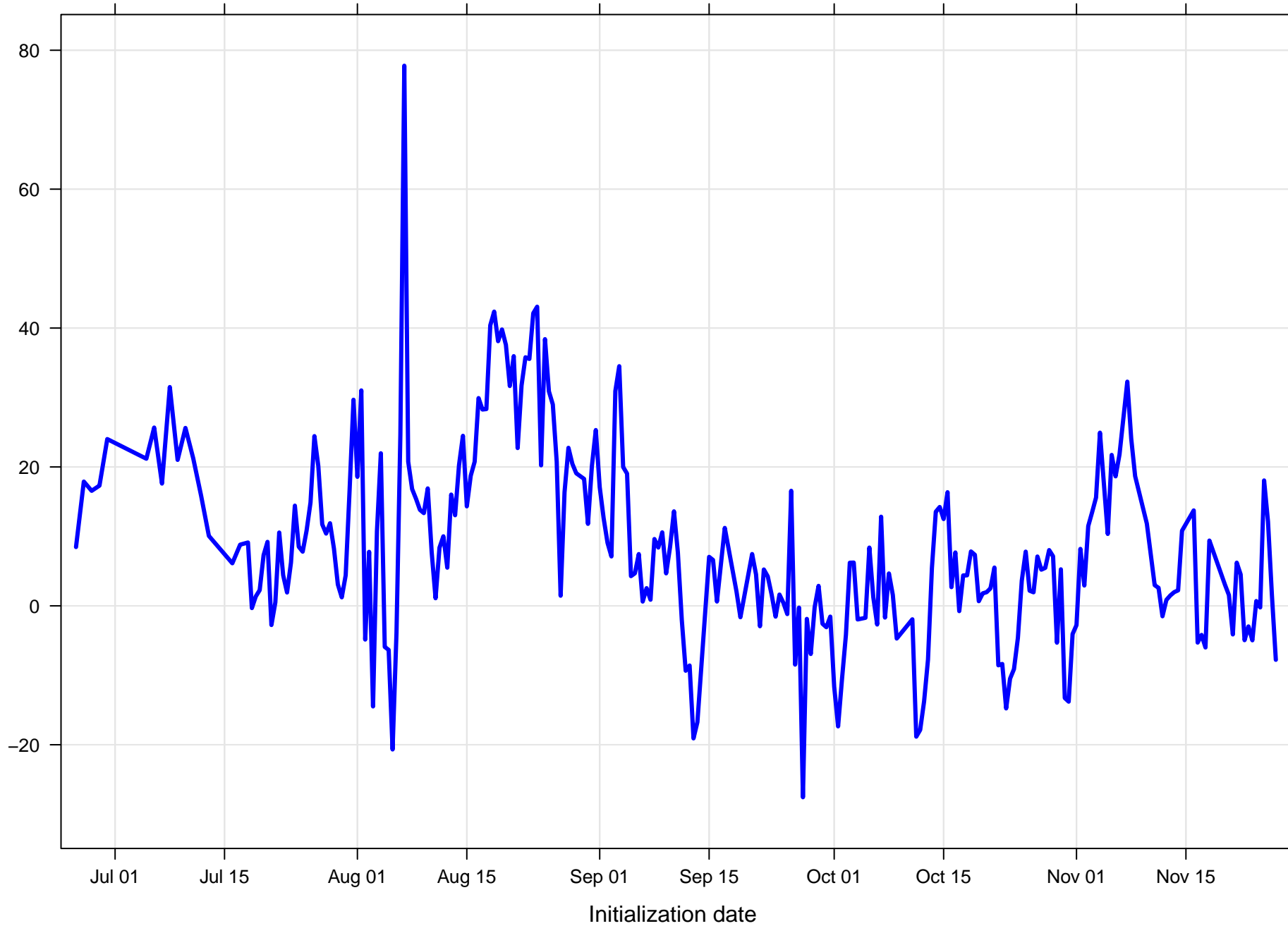
# Surface wind speed RMSE KHRO



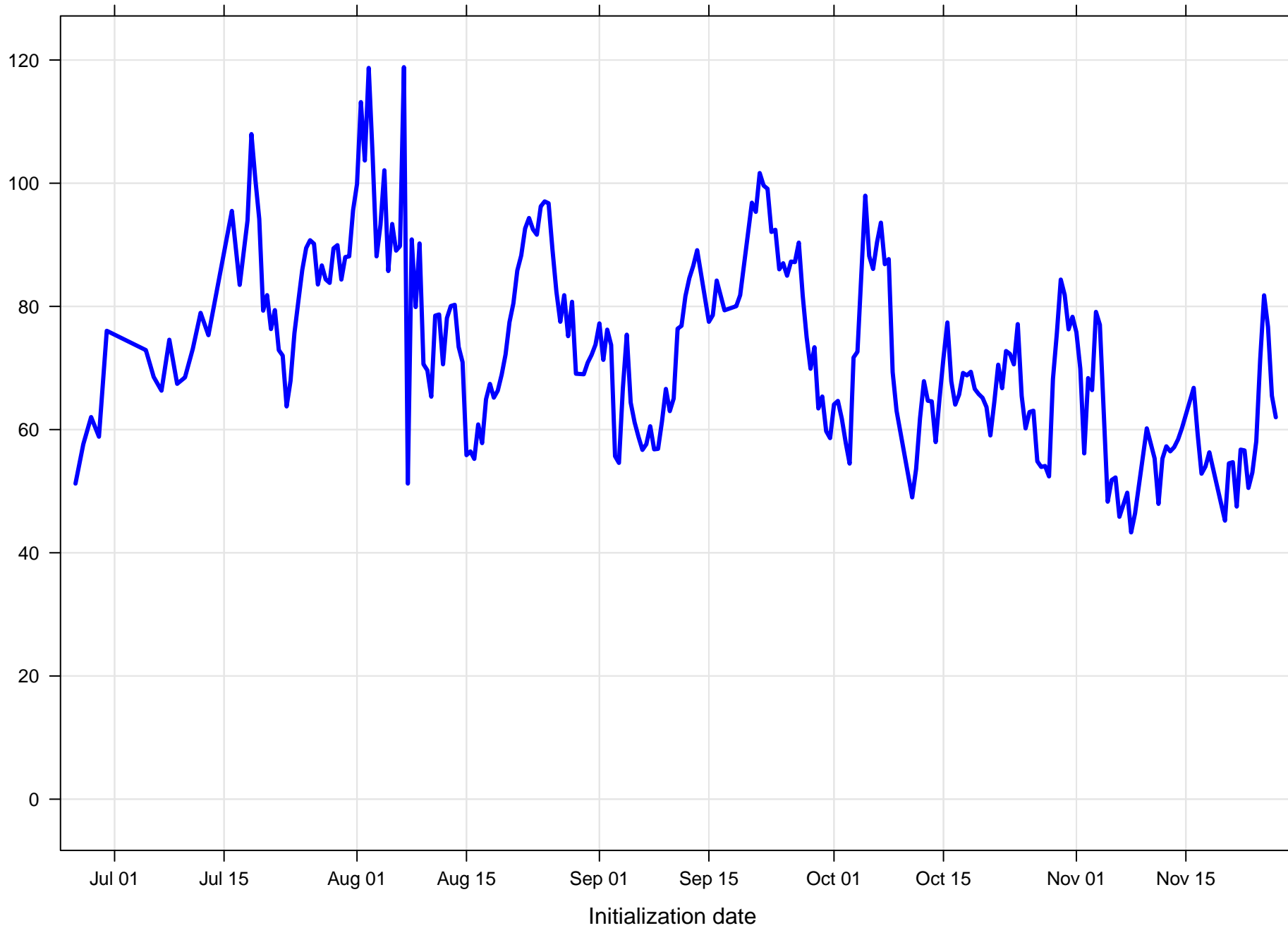
# Surface direction RMSE KHRO



Surface wind direction bias at KHRO all forecast hours and members

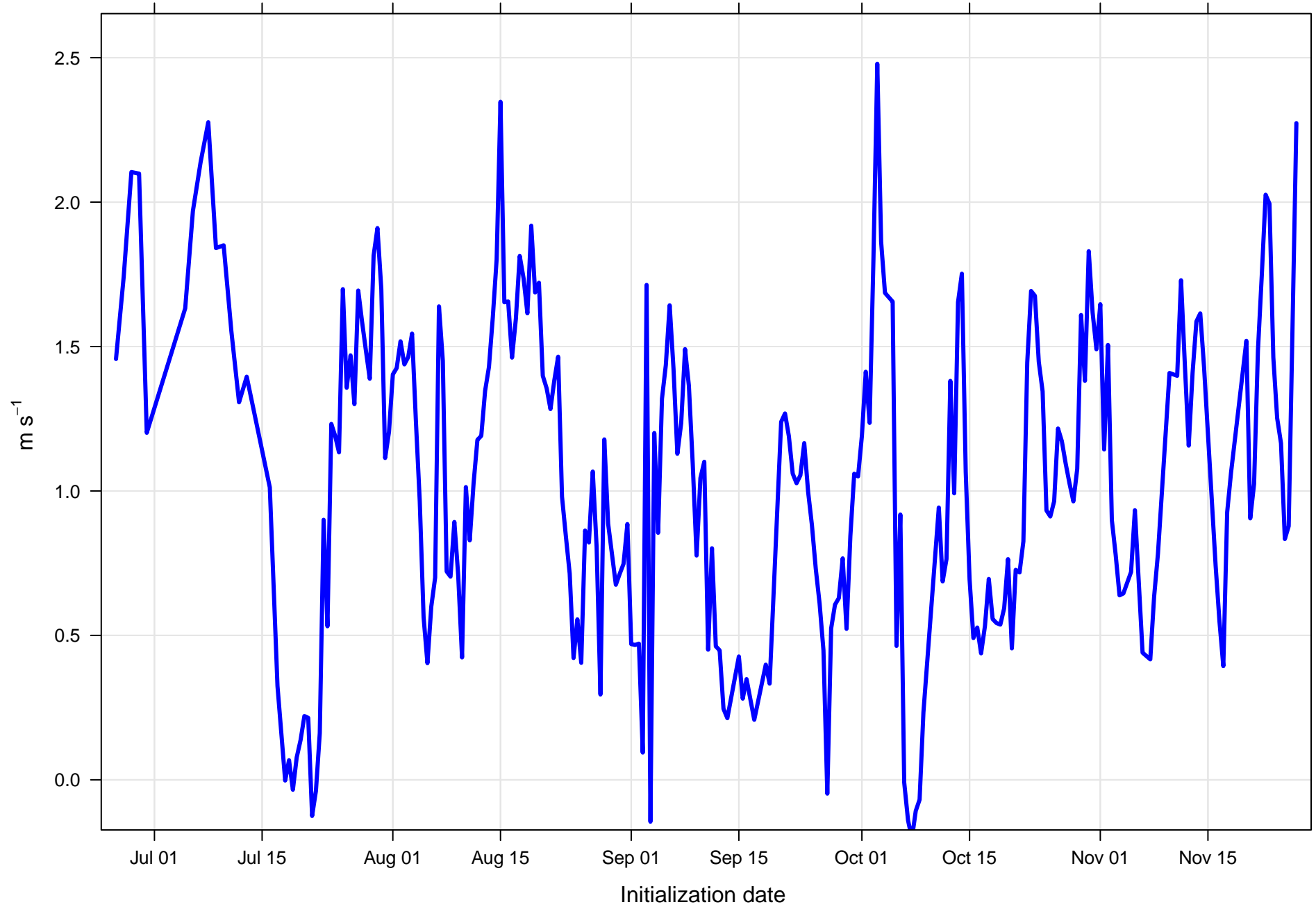


Surface wind direction RMSE at KHRO all forecast hours and members

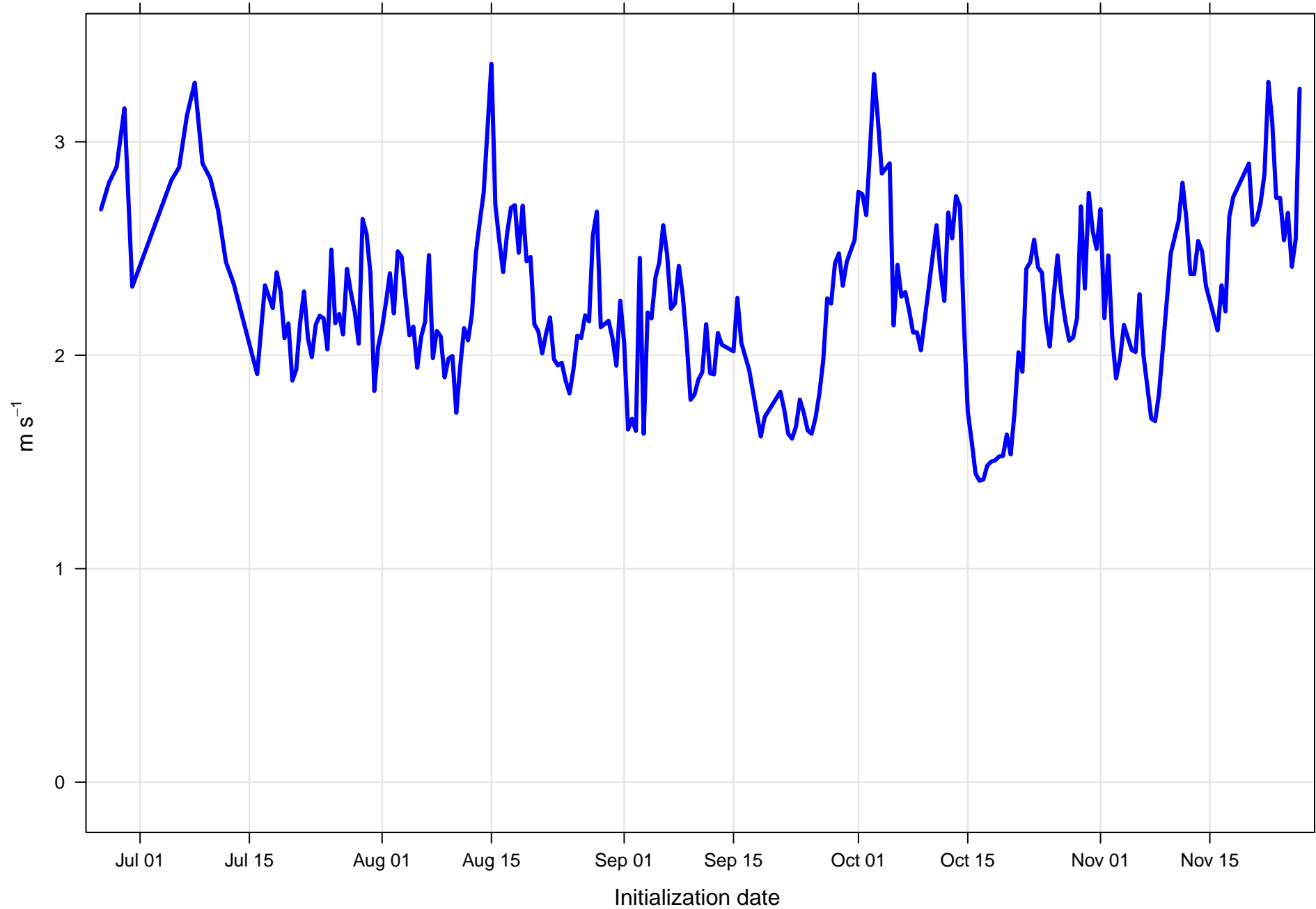




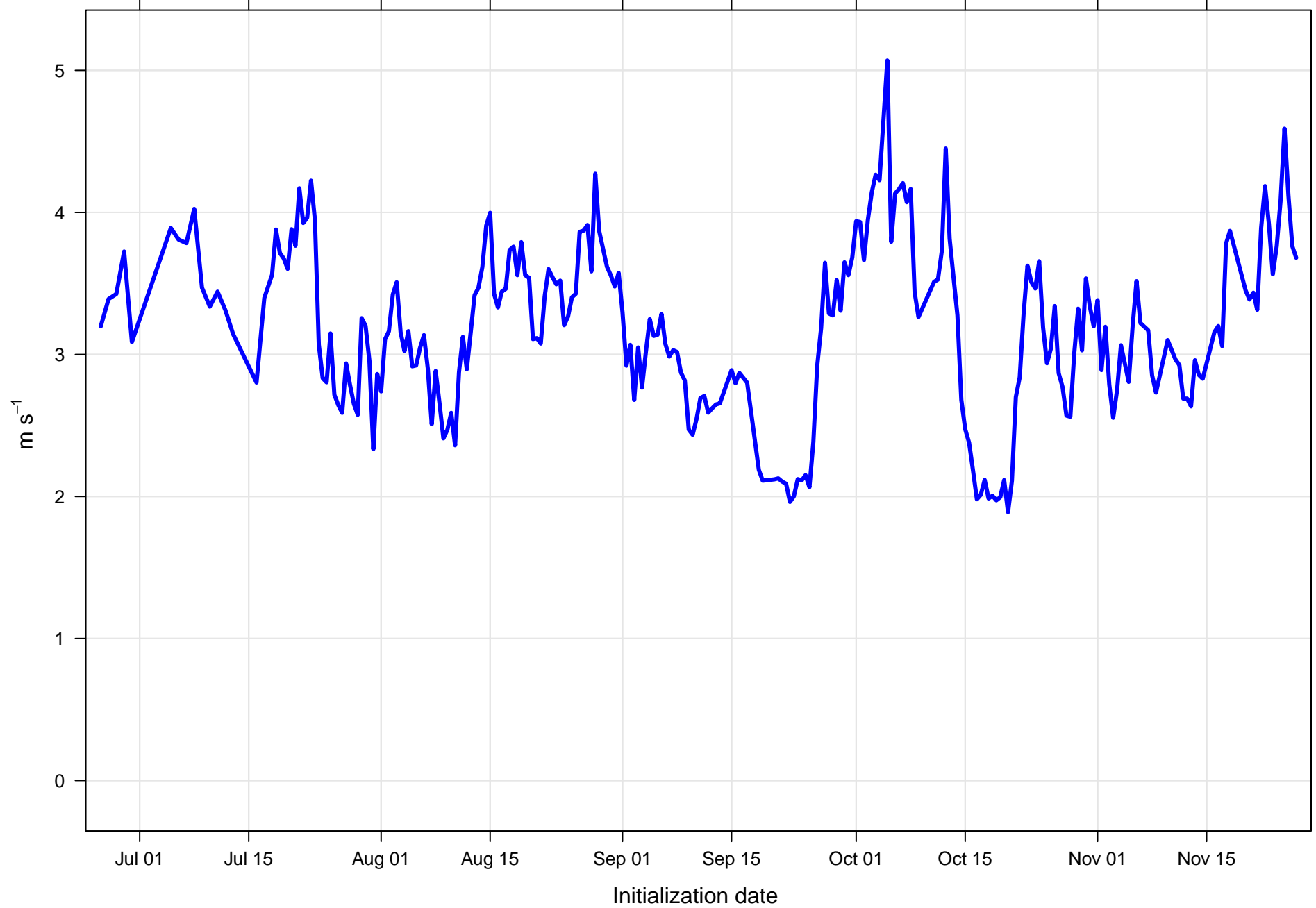
Surface wind speed bias at KHRO all forecast hours and members



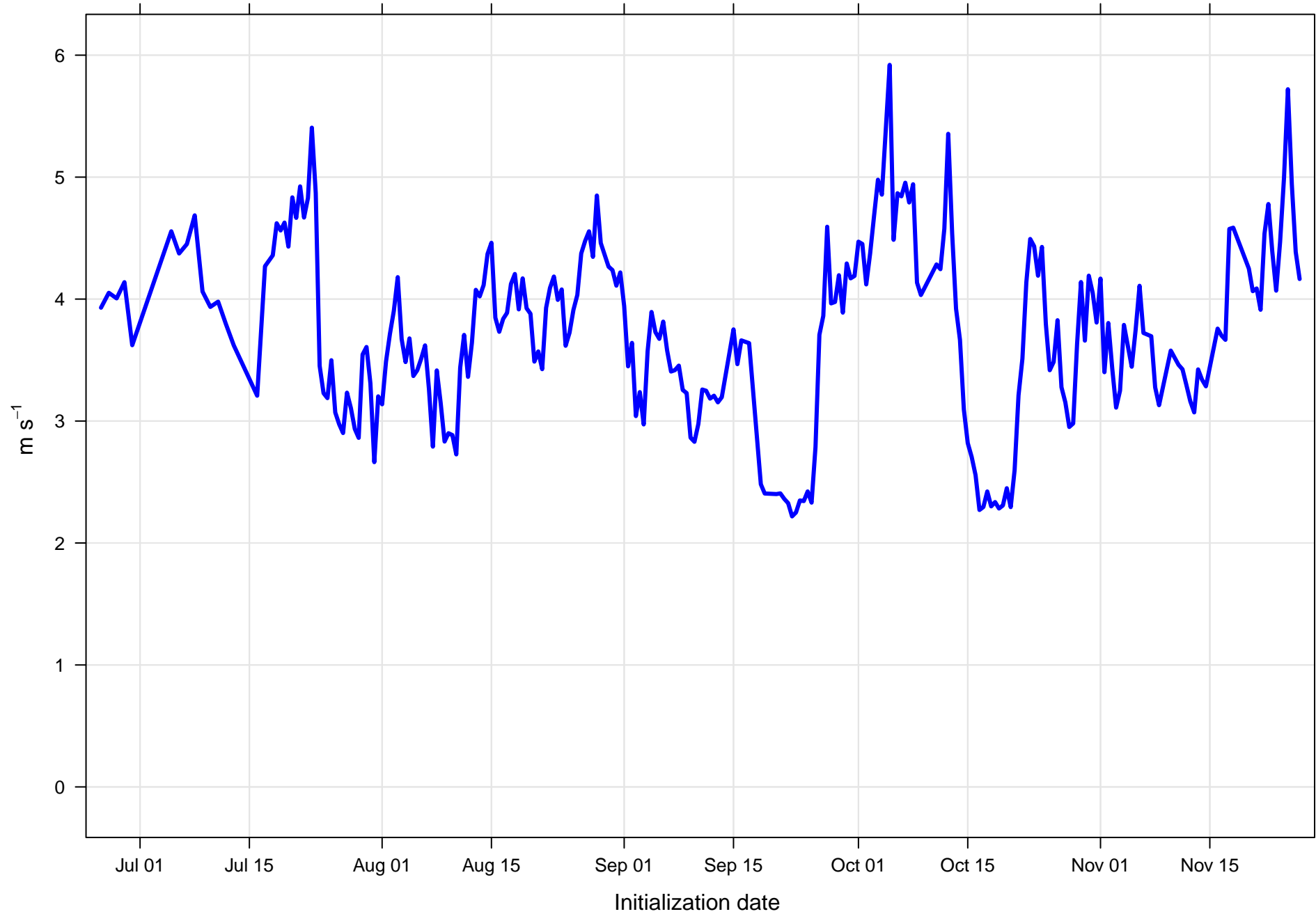
Surface wind speed RMSE at KHRO all forecast hours and members



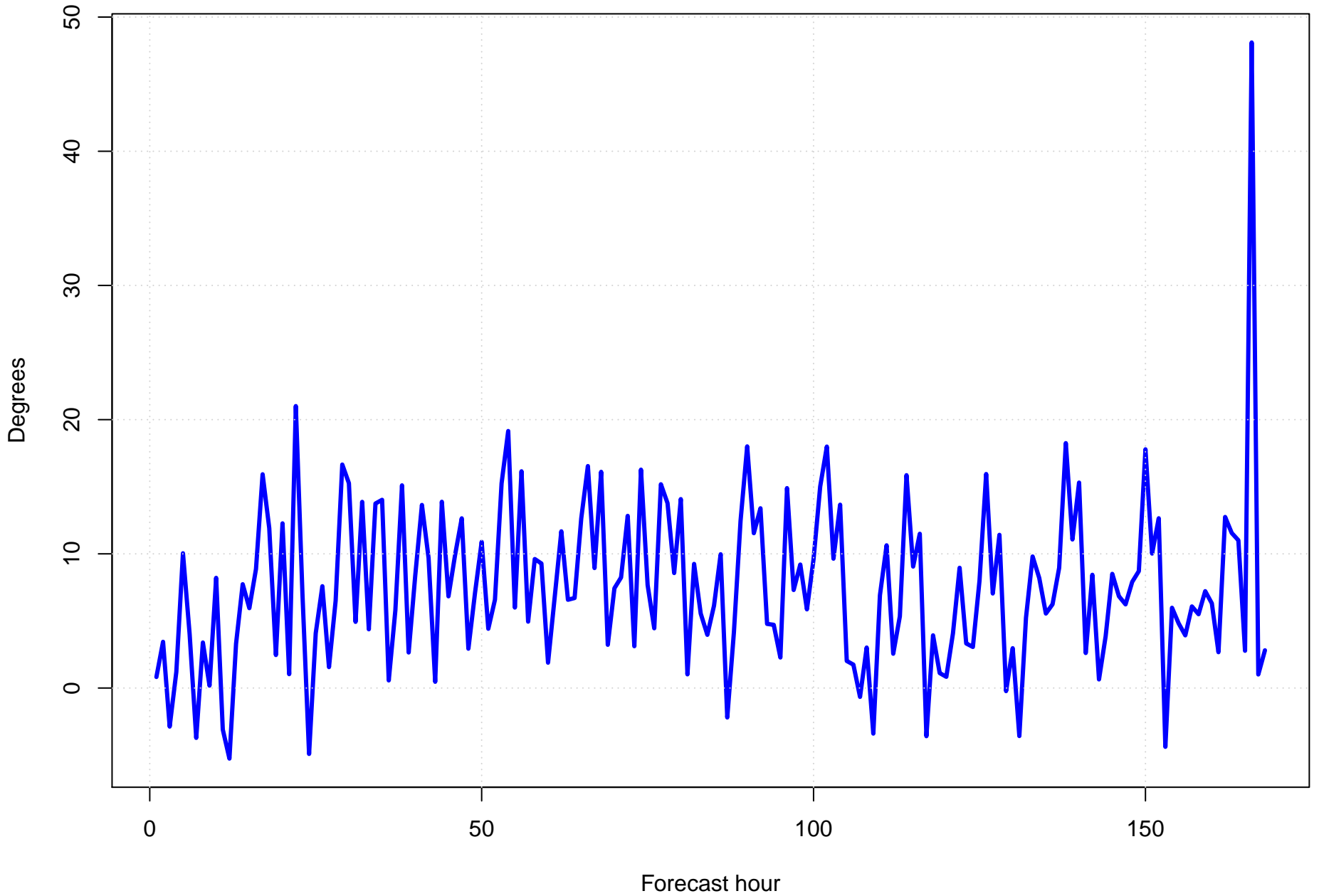
Surface vector wind mean error KHRO all forecast hours and members



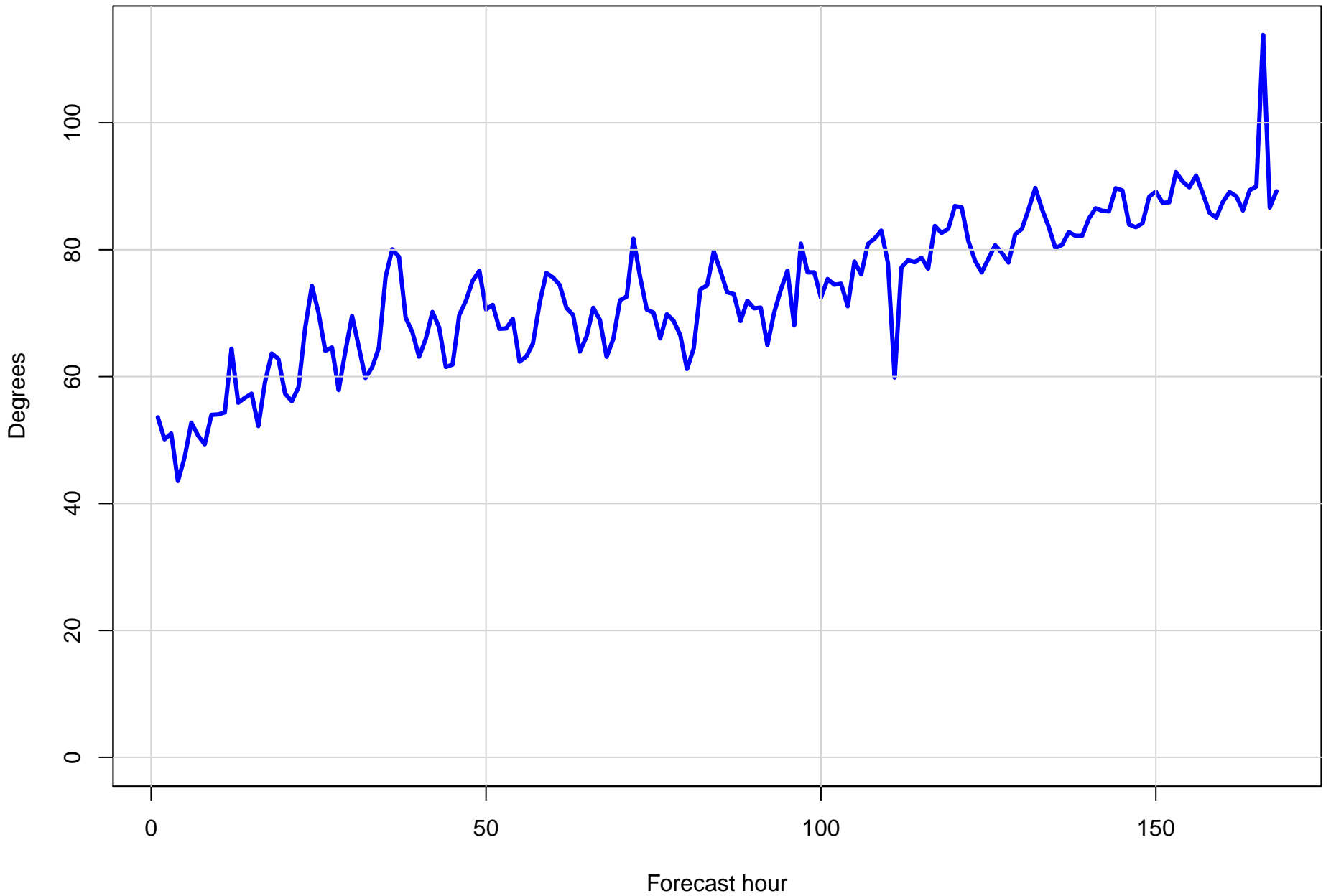
Surface vector wind RMSE at KHRO all forecast hours and members



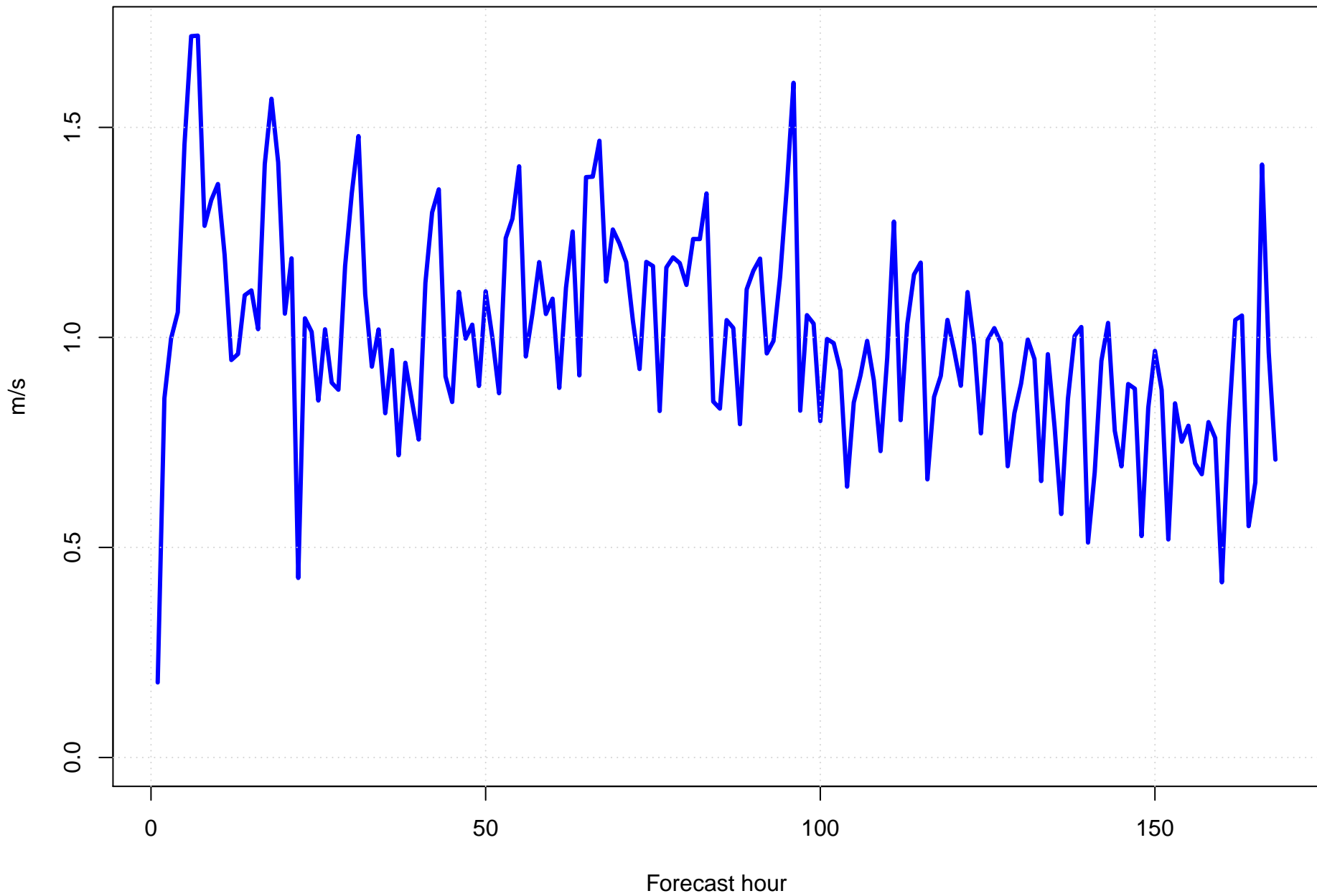
Surface wind direction bias at KHRO by forecast hour



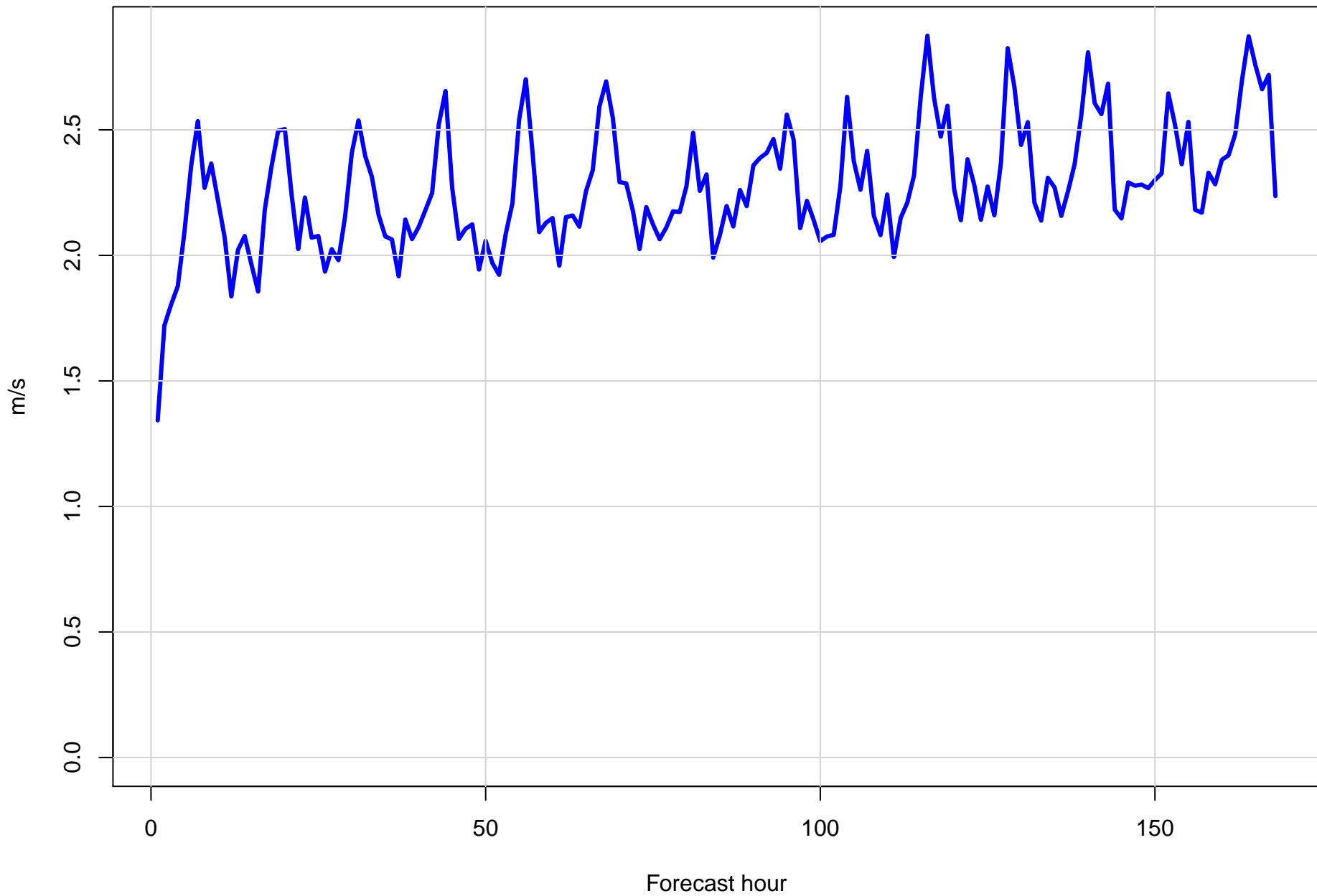
Surface wind direction RMSE at KHRO by forecast hour



Surface wind speed bias at KHRO by forecast hour

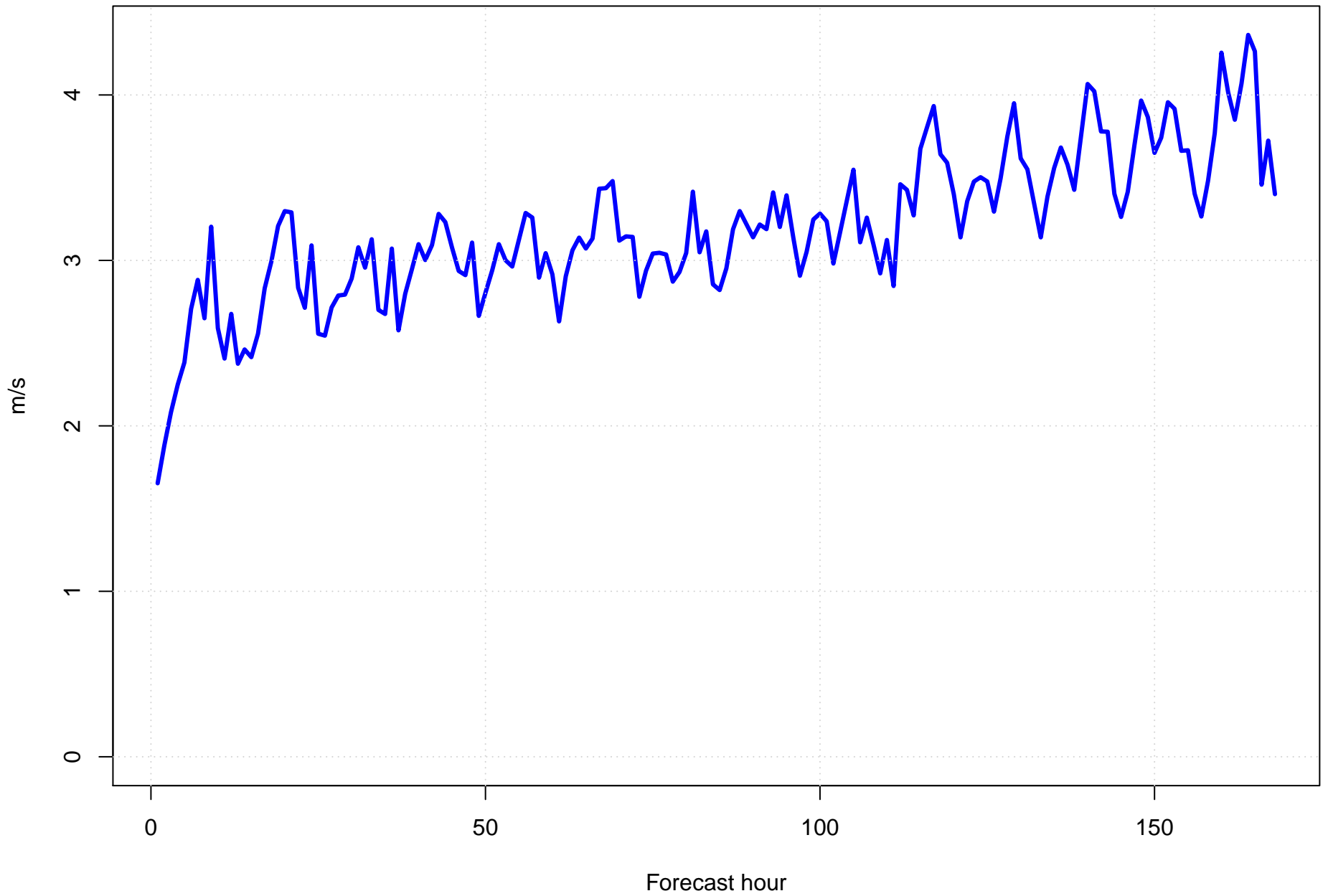


Surface wind speed RMSE at KHRO by forecast hour

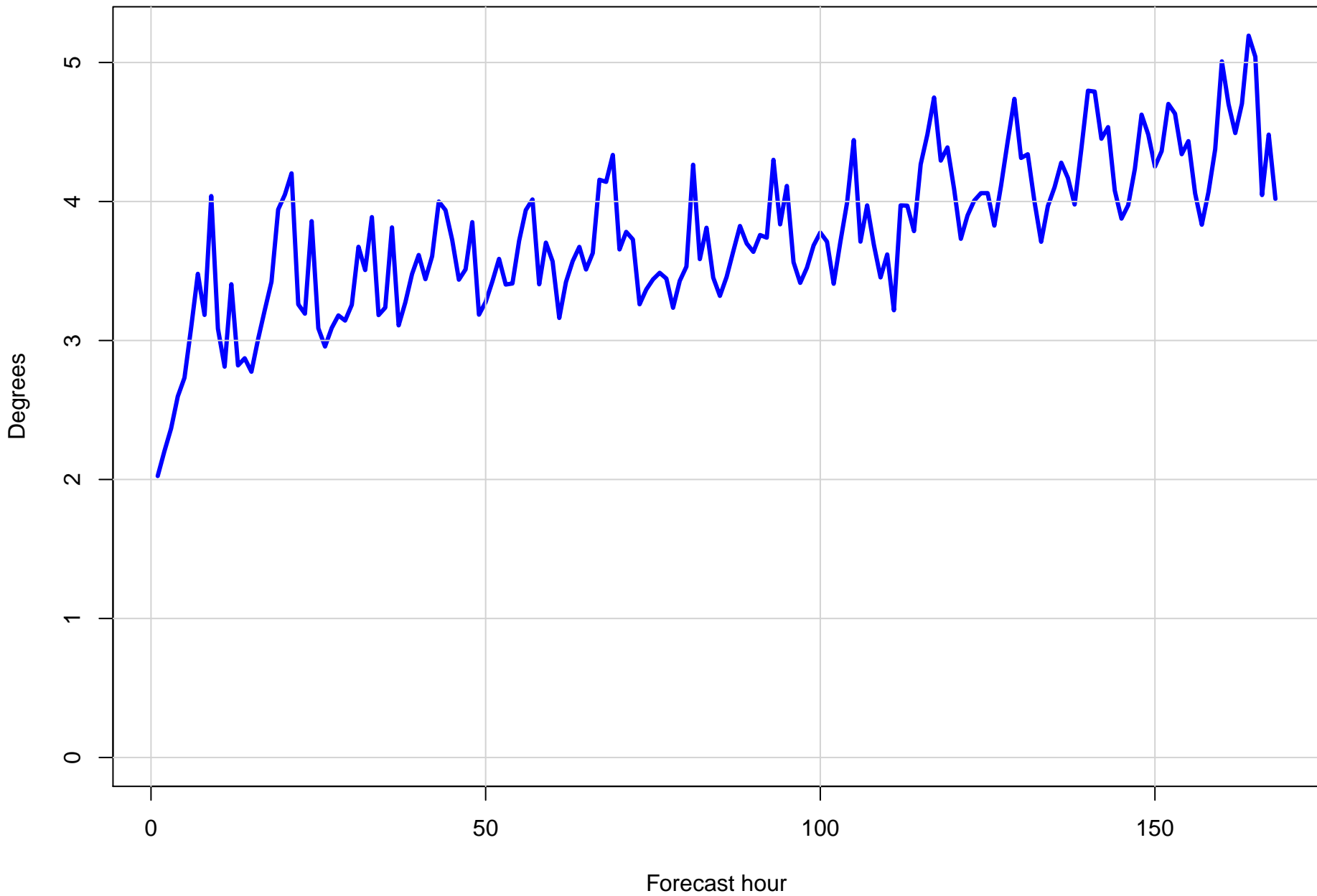




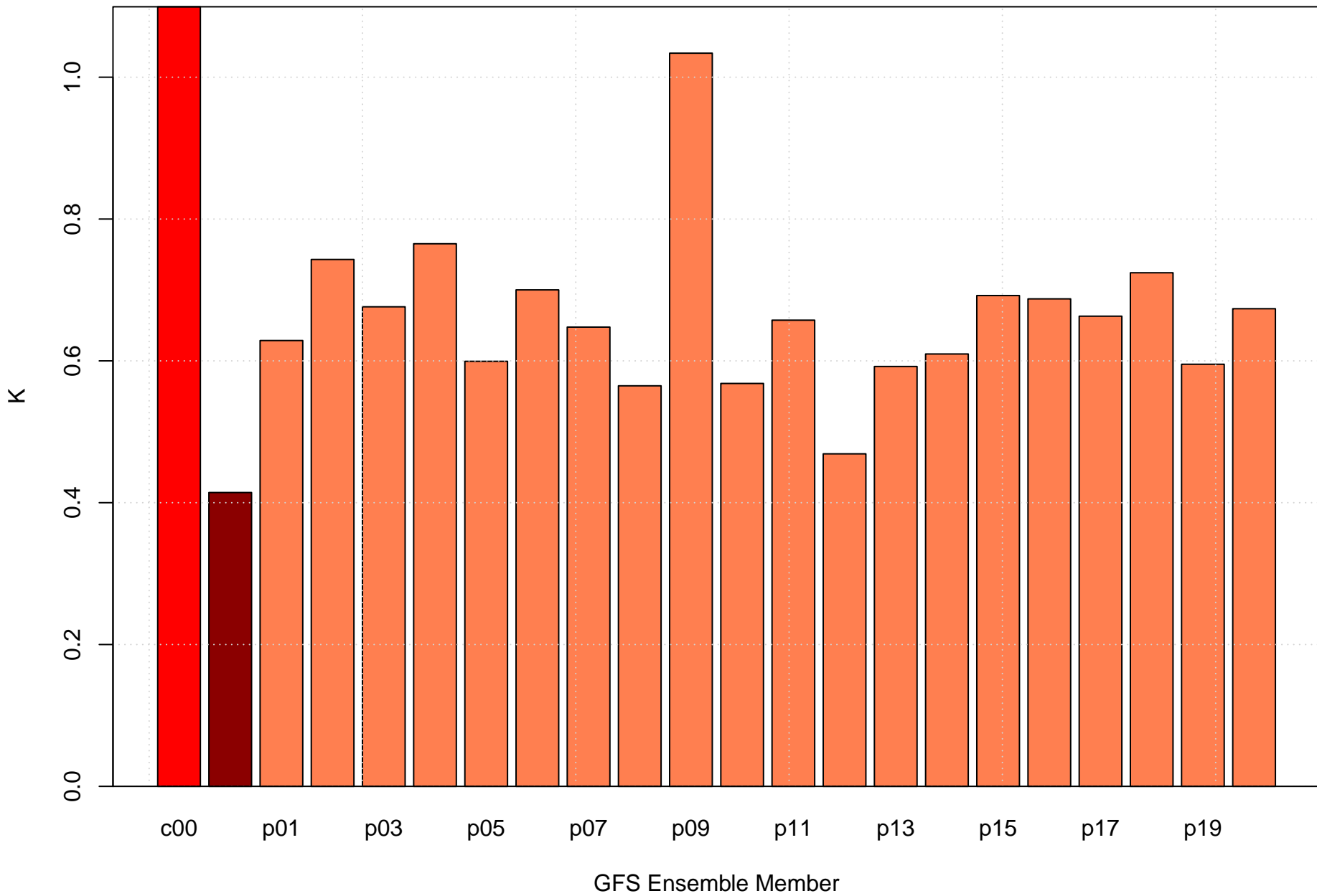
Surface vector wind error at KHRO by forecast hour



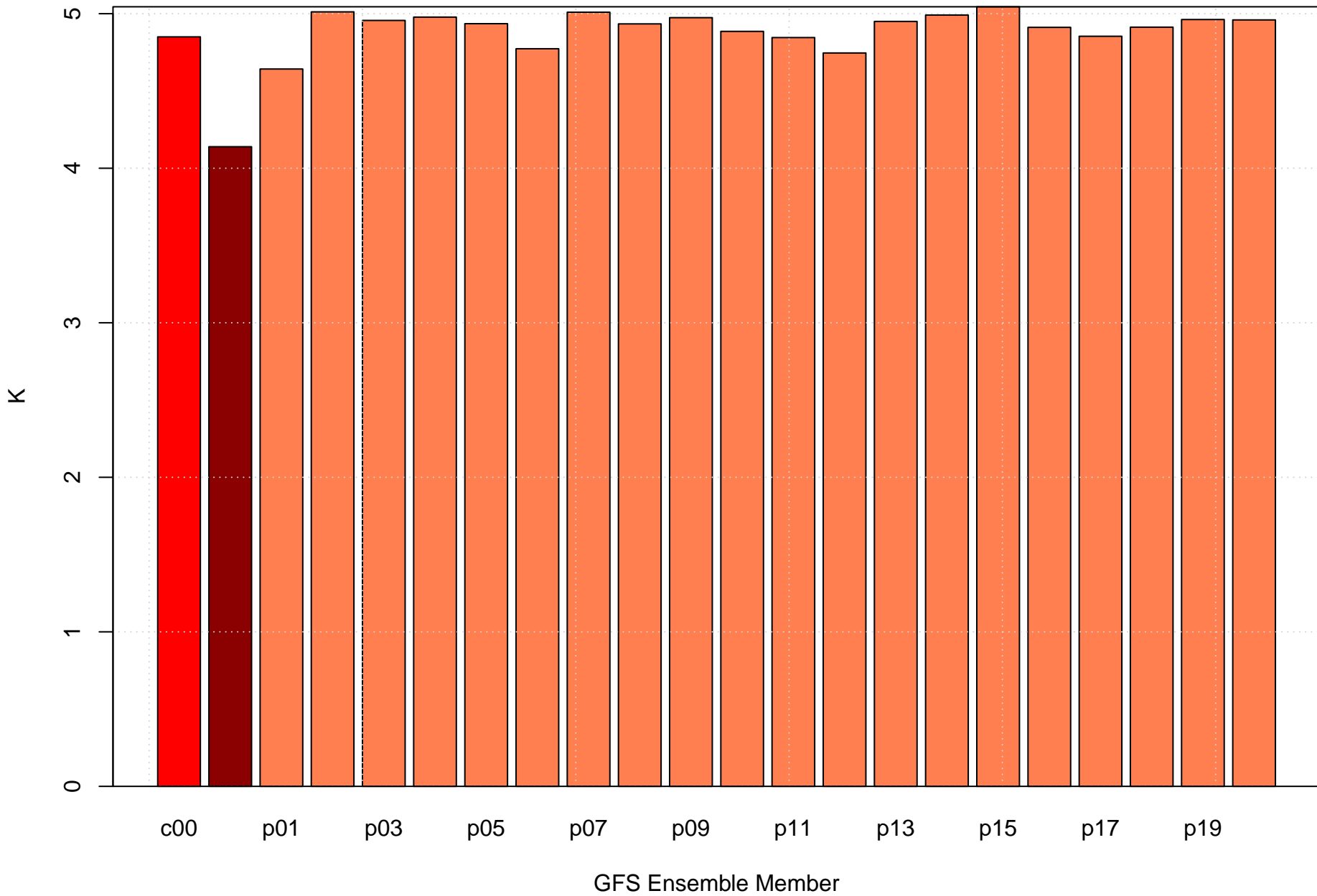
Surface vector wind RMSE at KHRO by forecast hour



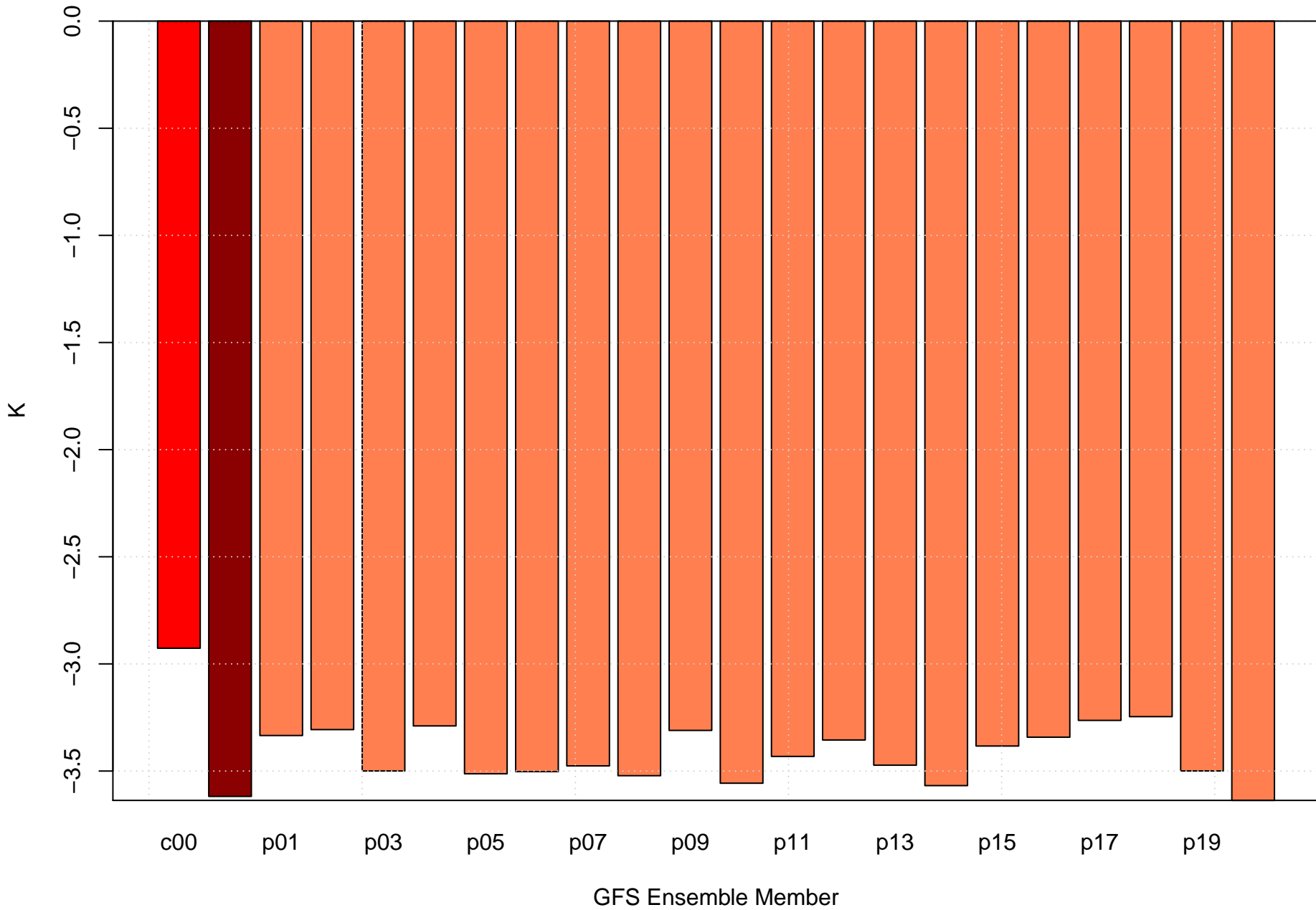
# Surface temperature bias at KHRO



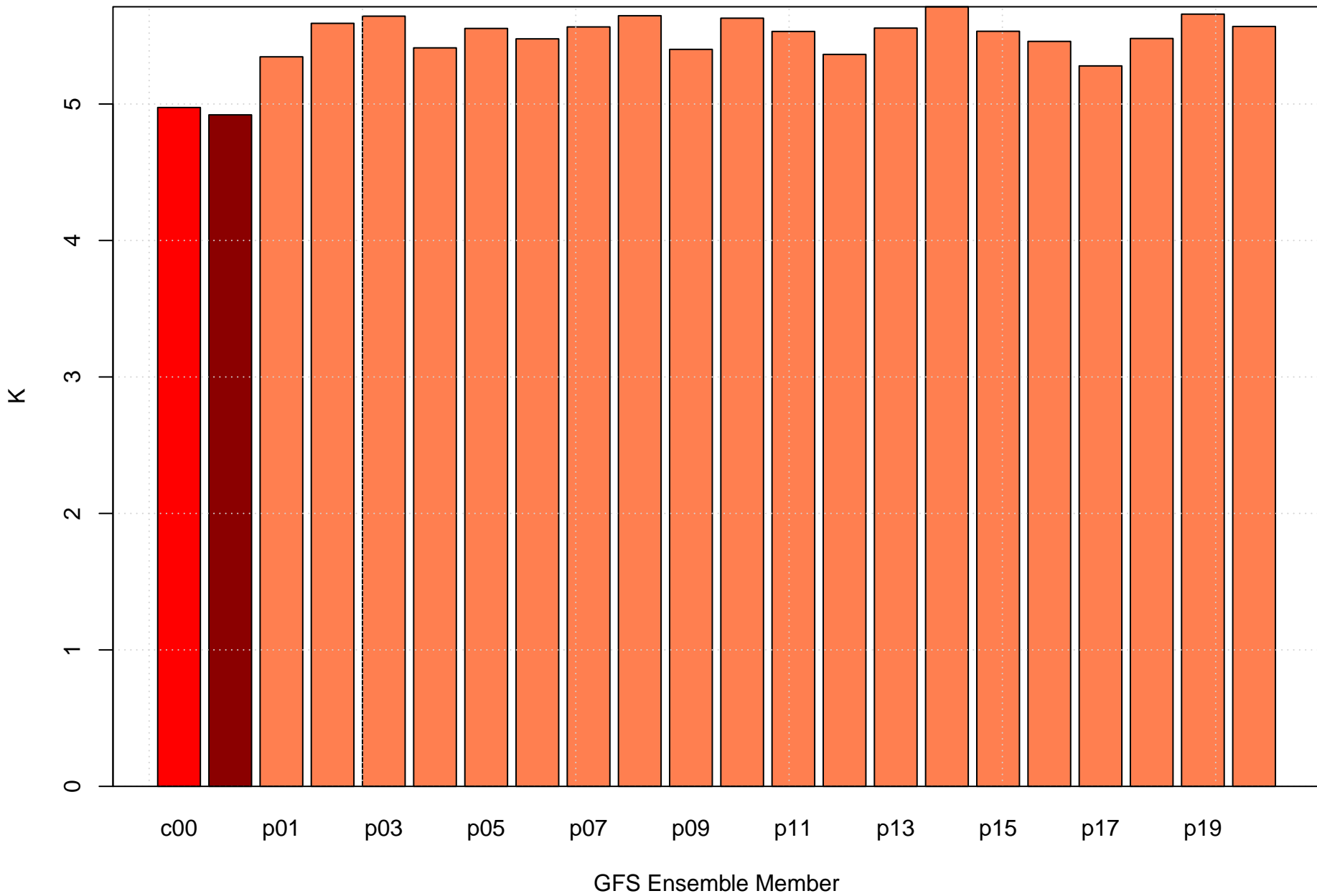
# Surface temperature RMSE at KHRO



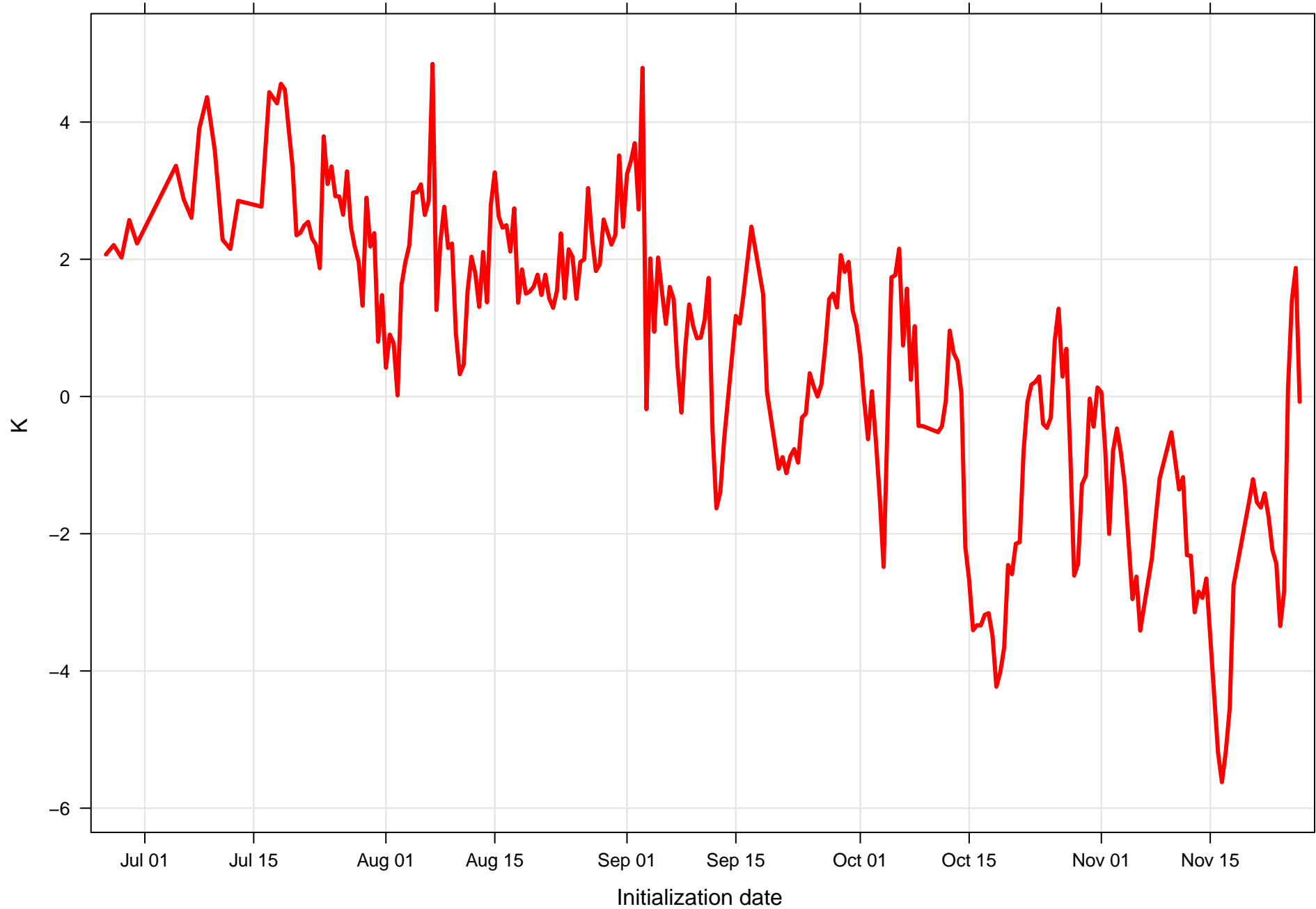
# Surface dew point bias at KHRO



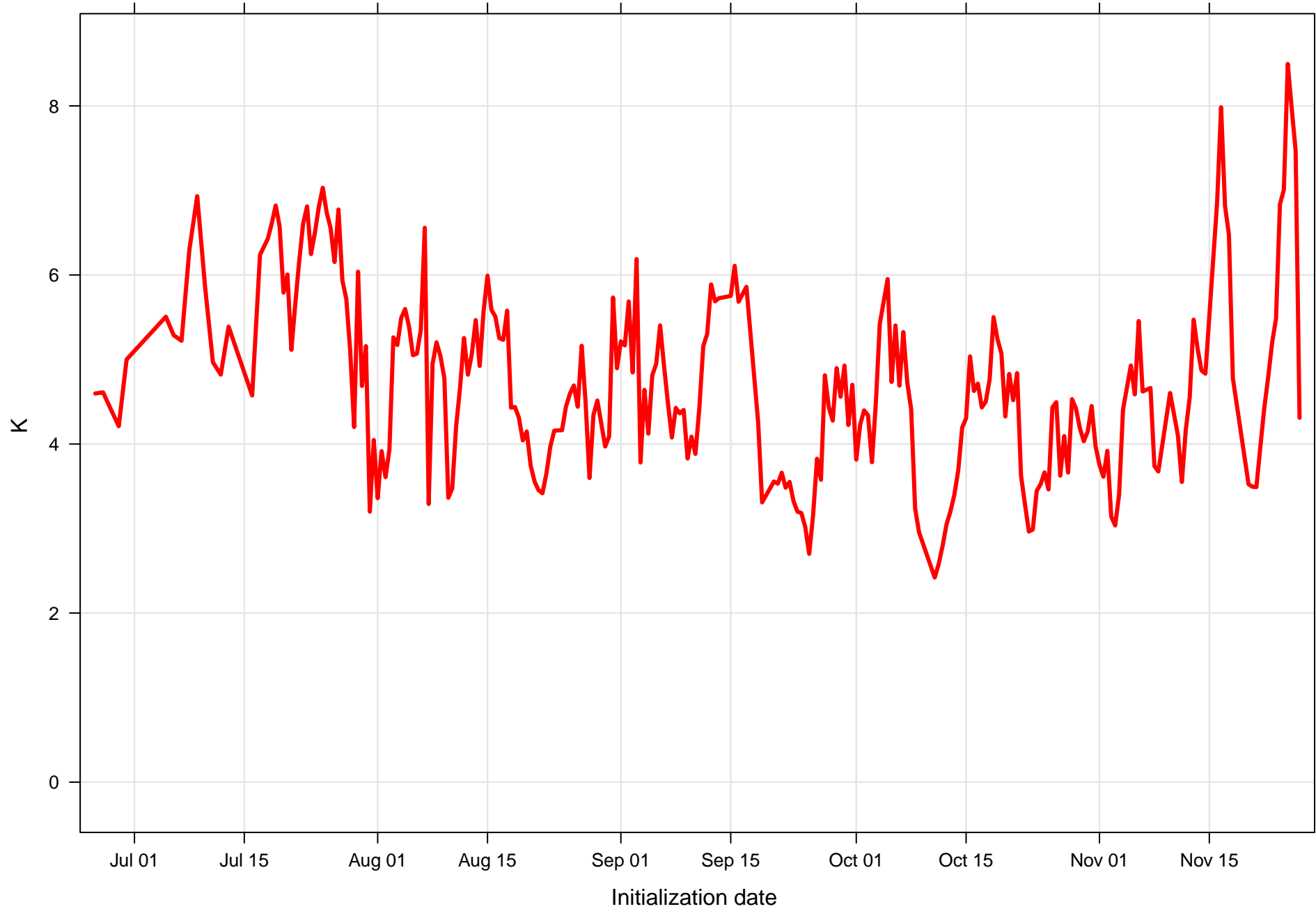
# Surface dew point RMSE at KHRO



Surface temperature bias at KHRO all forecast hours and members

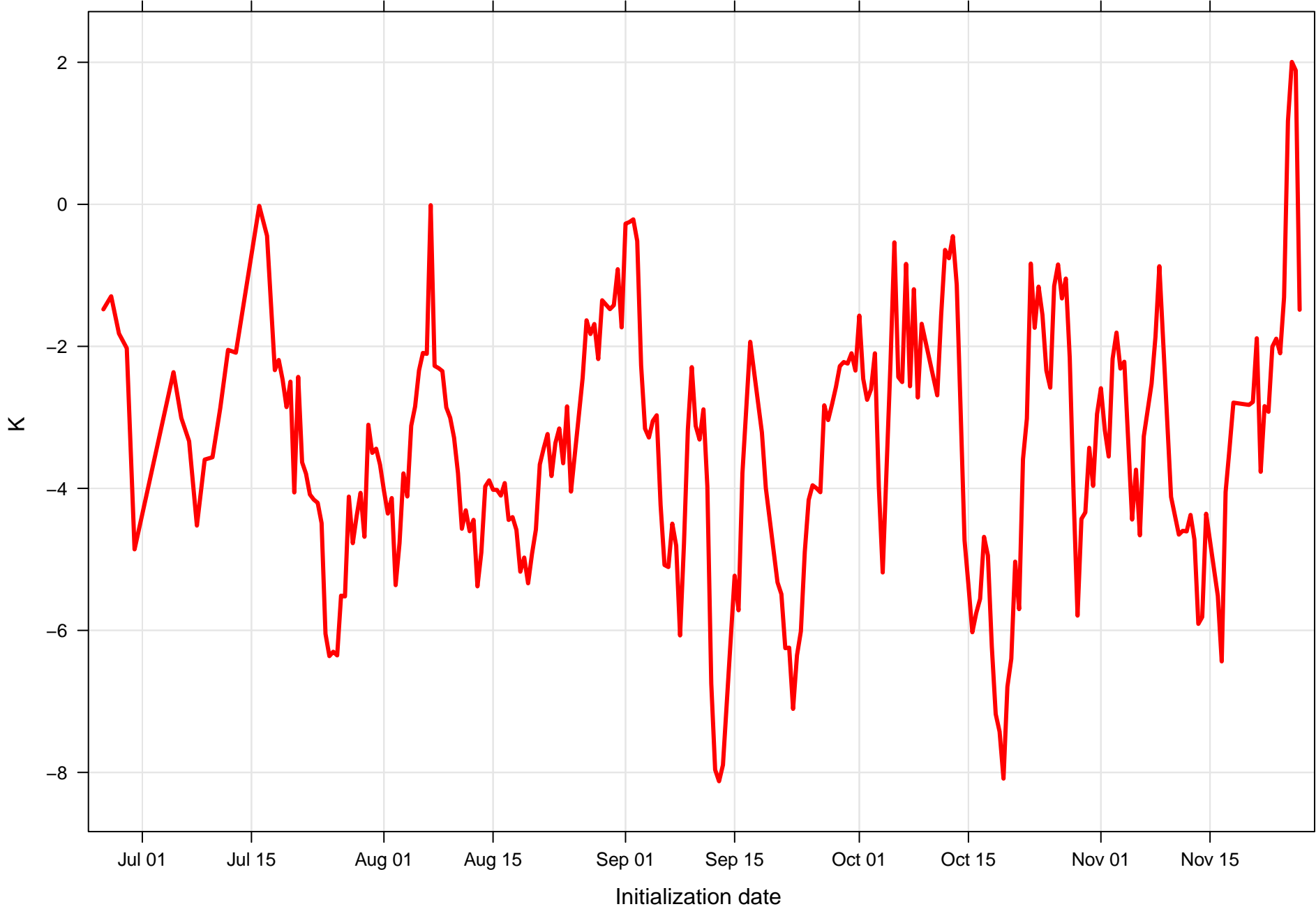


Surface temperature RMSE at KHRO all forecast hours and members

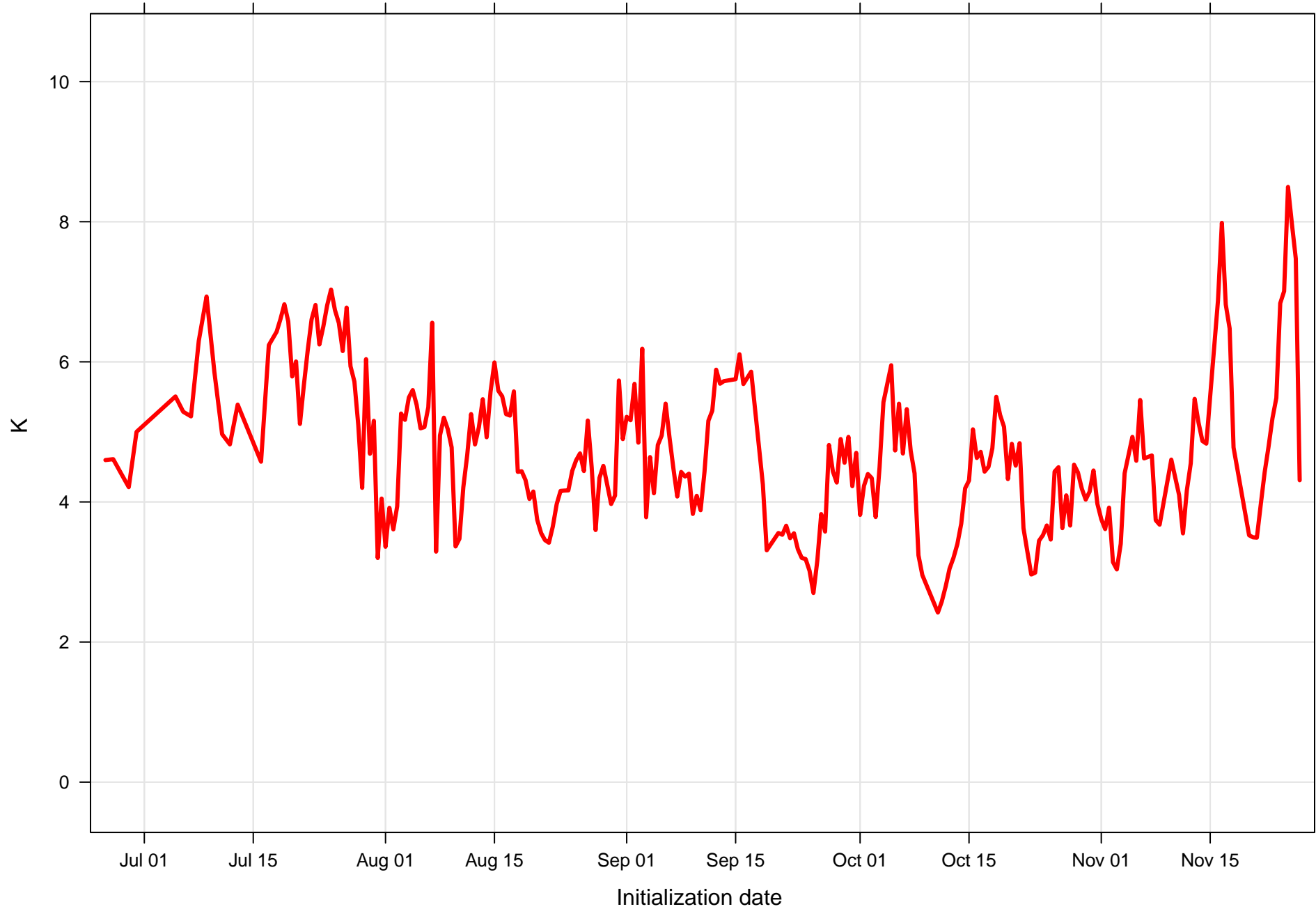




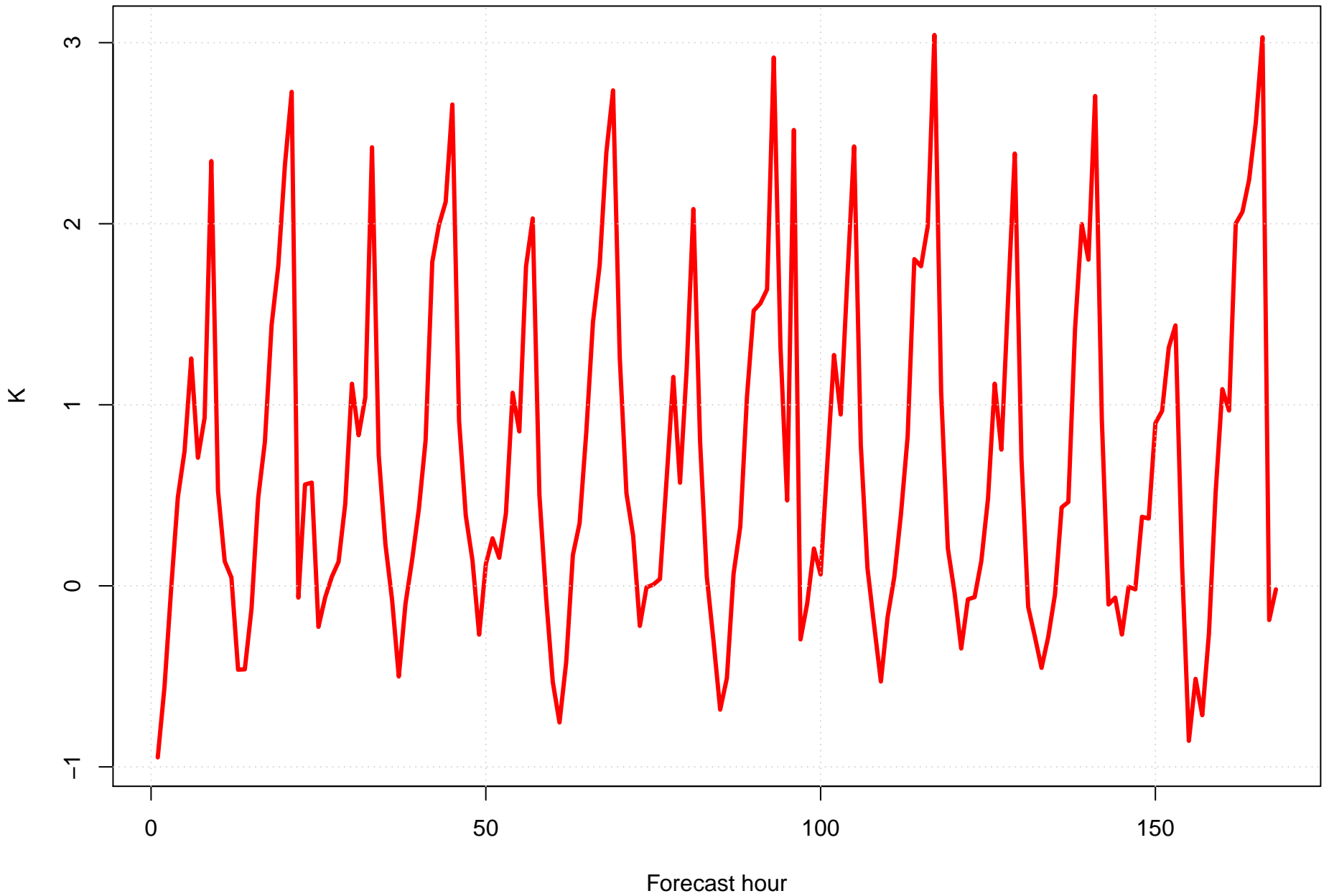
Surface dew point bias at KHRO all forecast hours and members



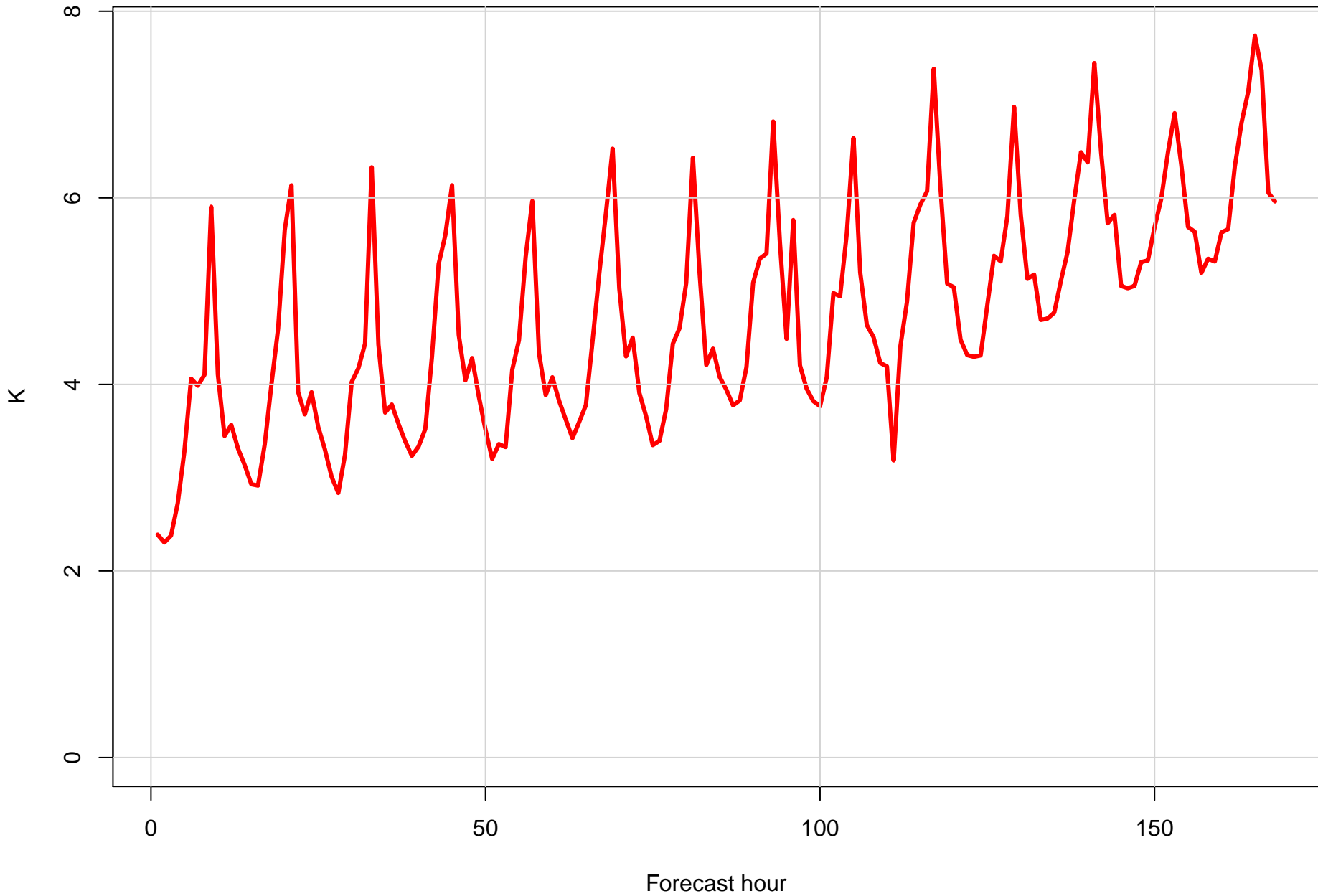
Surface dew point RMSE at KHRO all forecast hours and members



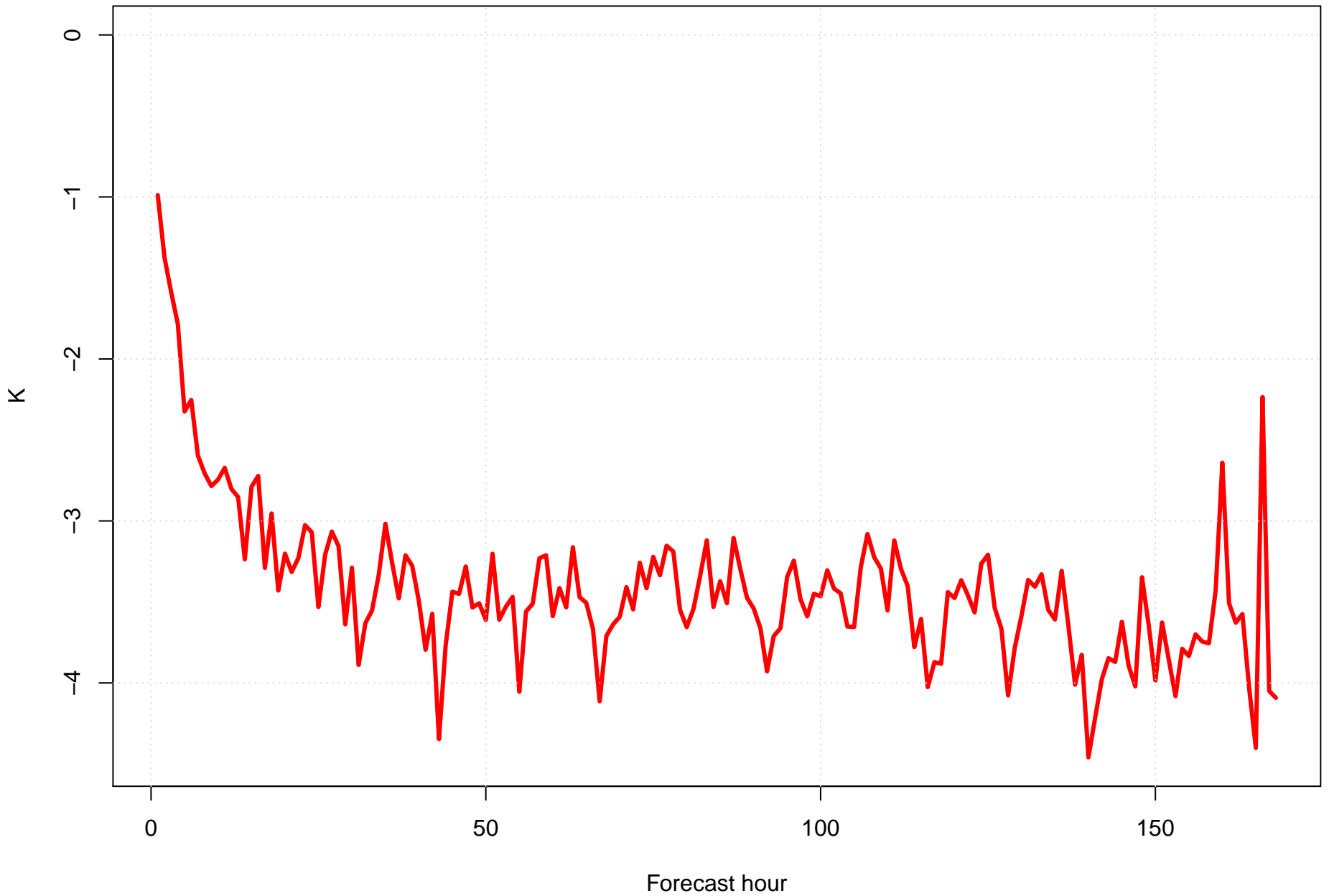
Surface temperature bias at KHRO by forecast hour



Surface temperature RMSE at KHRO by forecast hour



Surface dew point bias at KHRO by forecast hour



Surface dew point RMSE at KHRO by forecast hour

