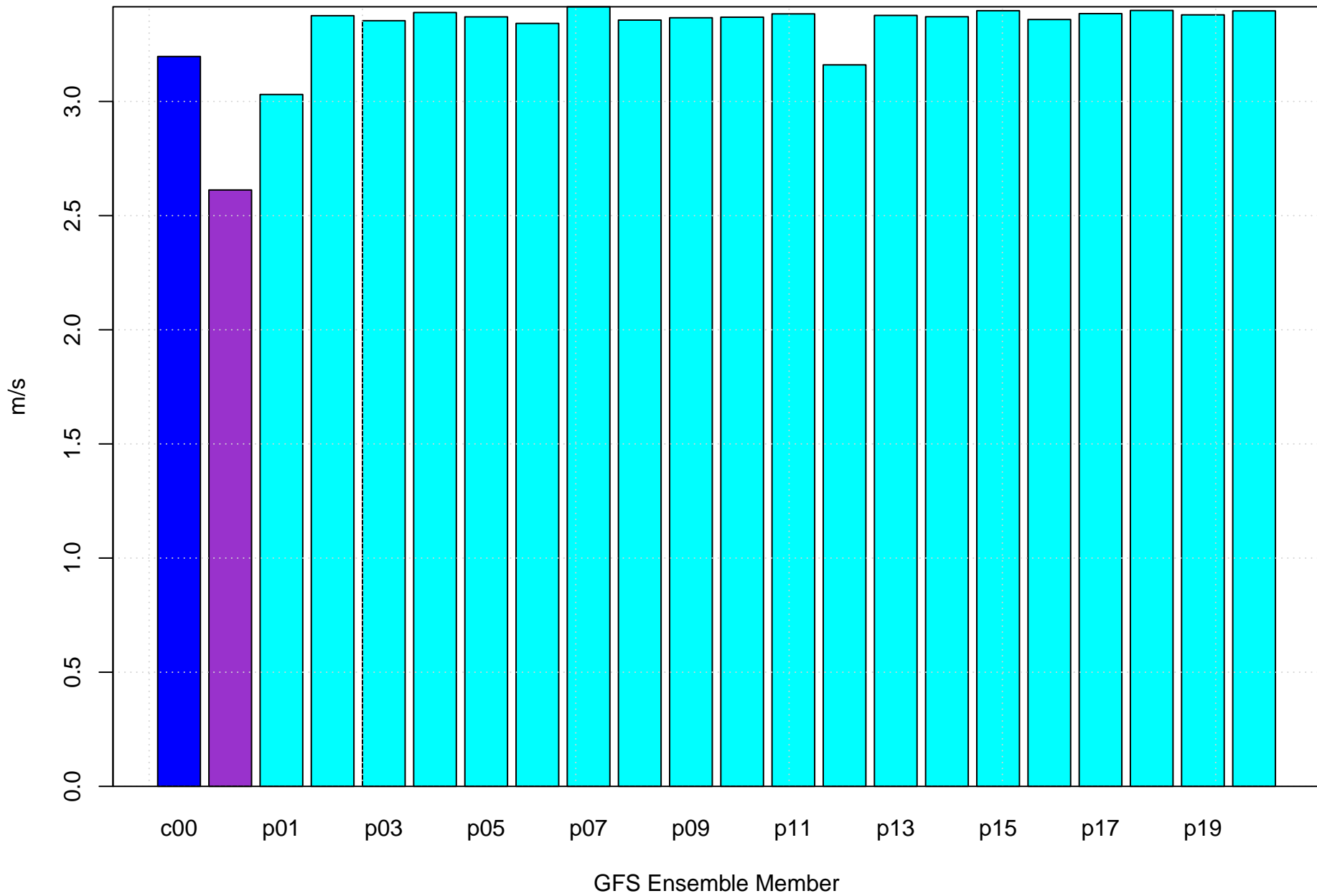
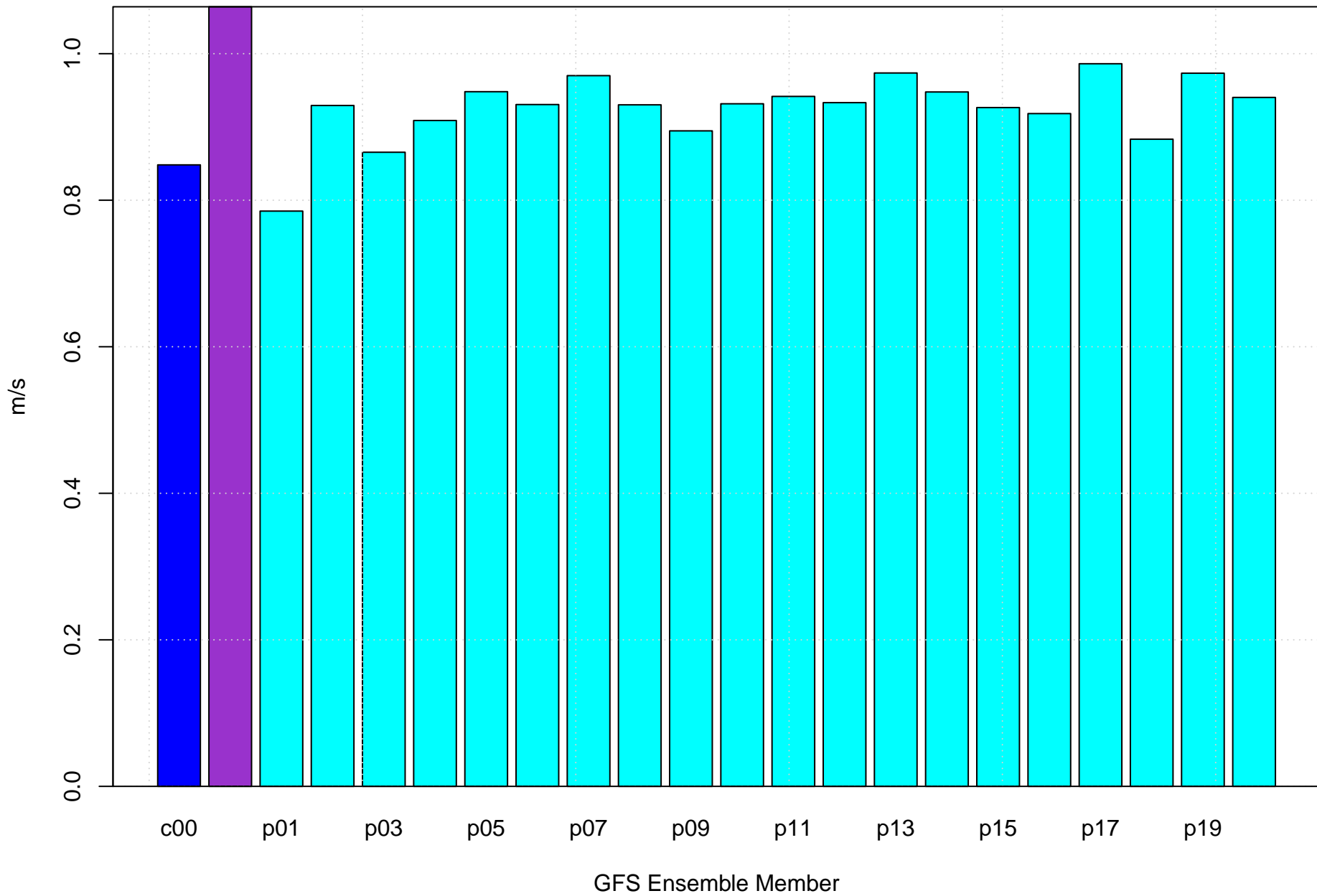


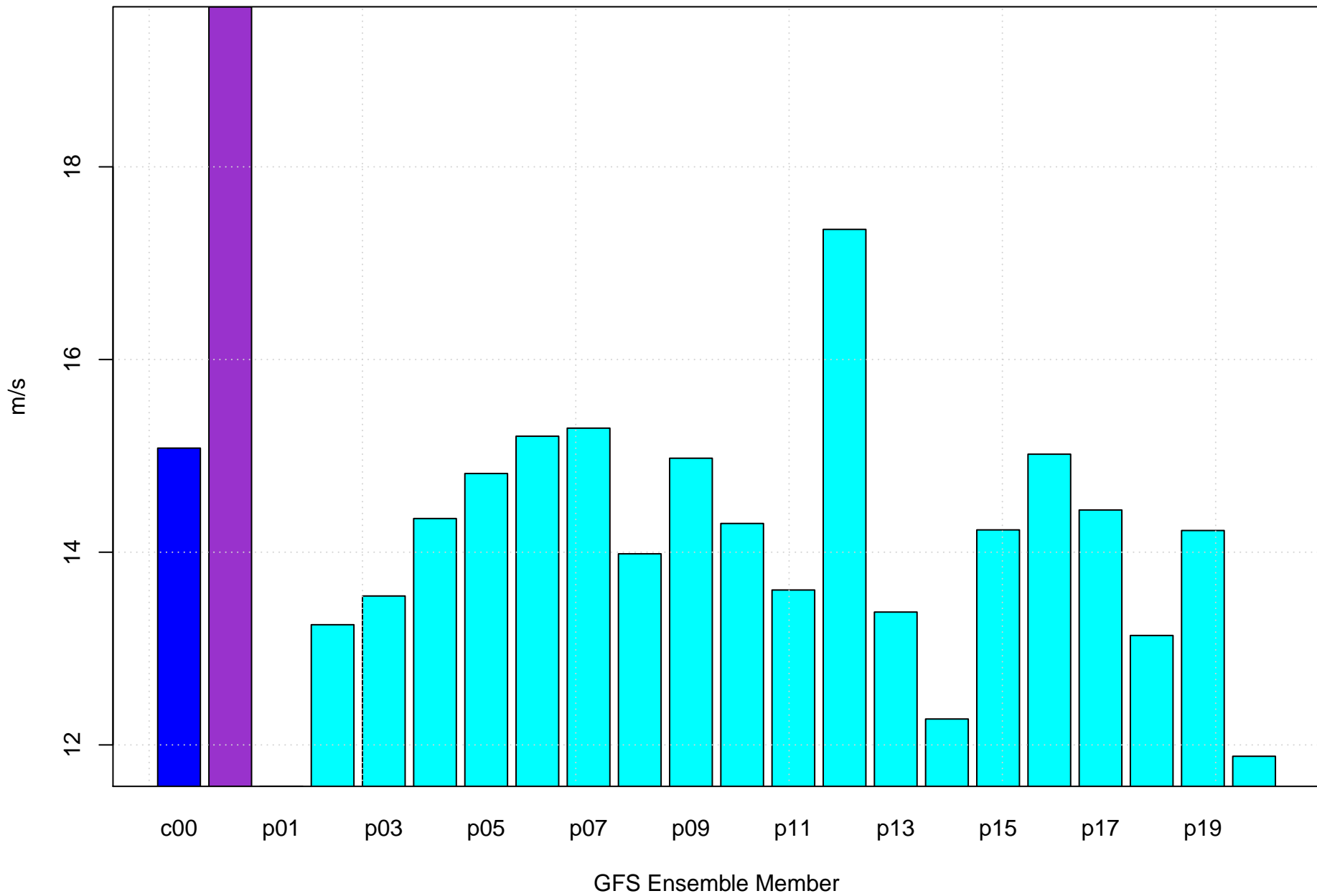
# Mean vector surface wind error KLIT



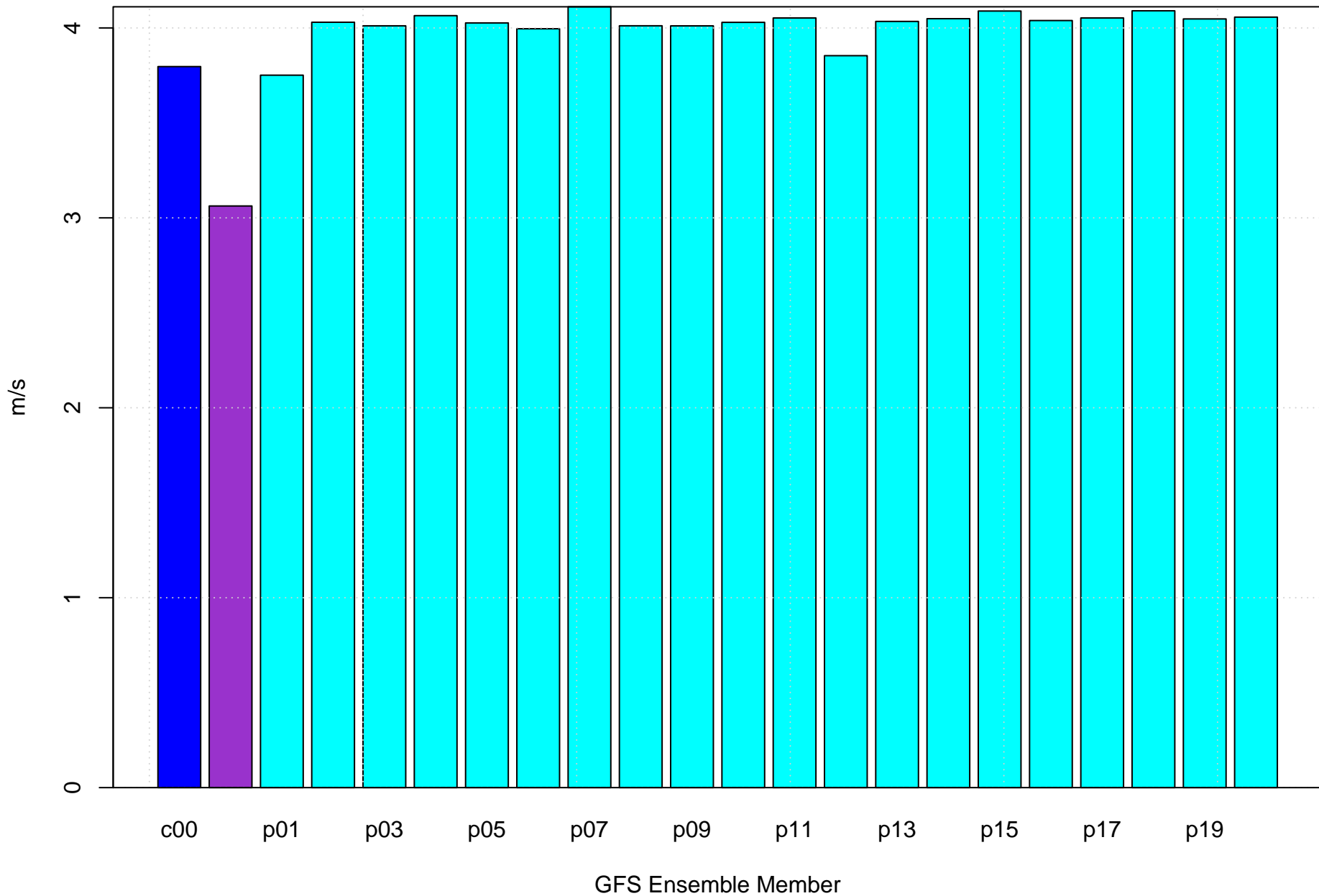
# Surface wind speed bias KLIT



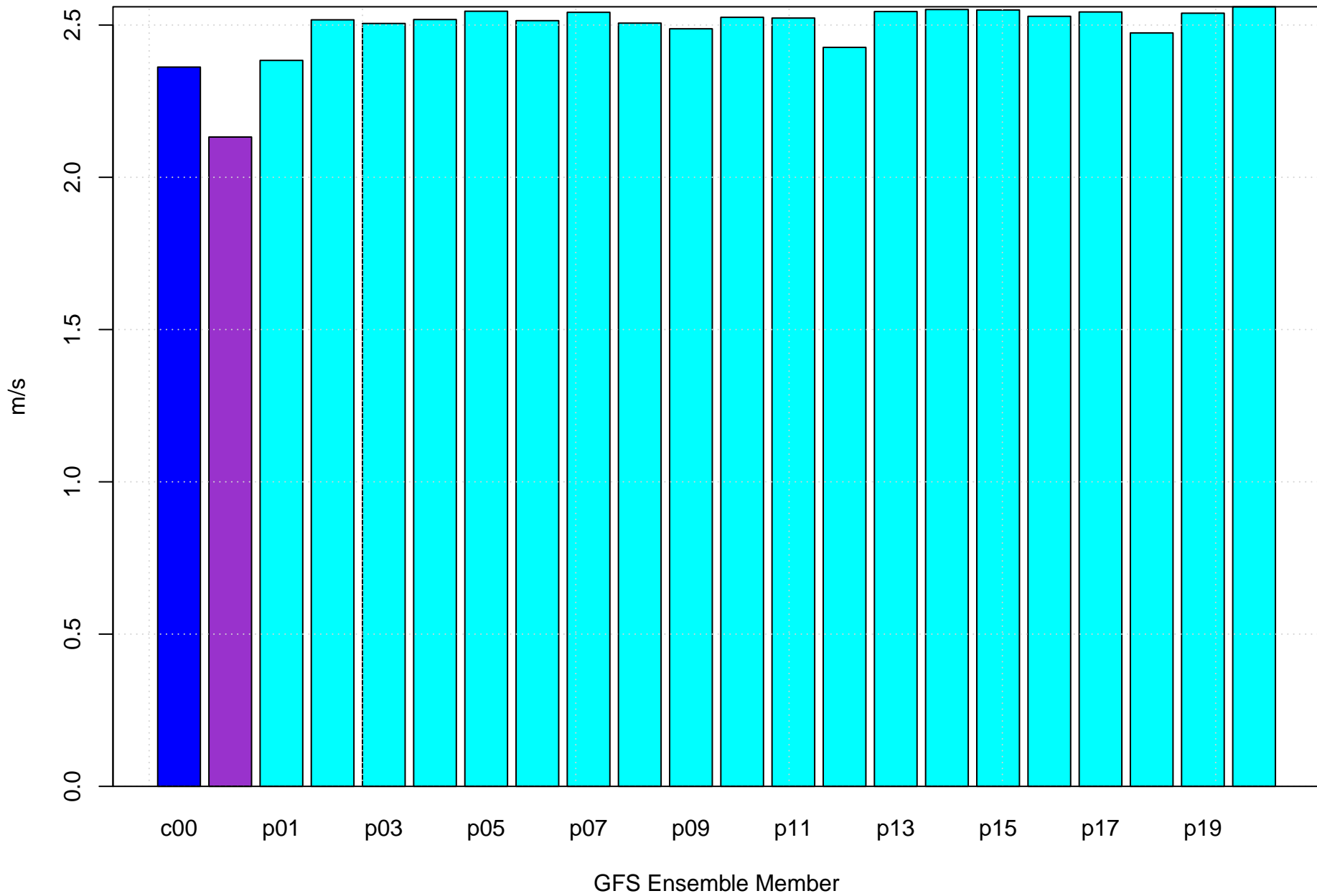
# Surface direction bias KLIT



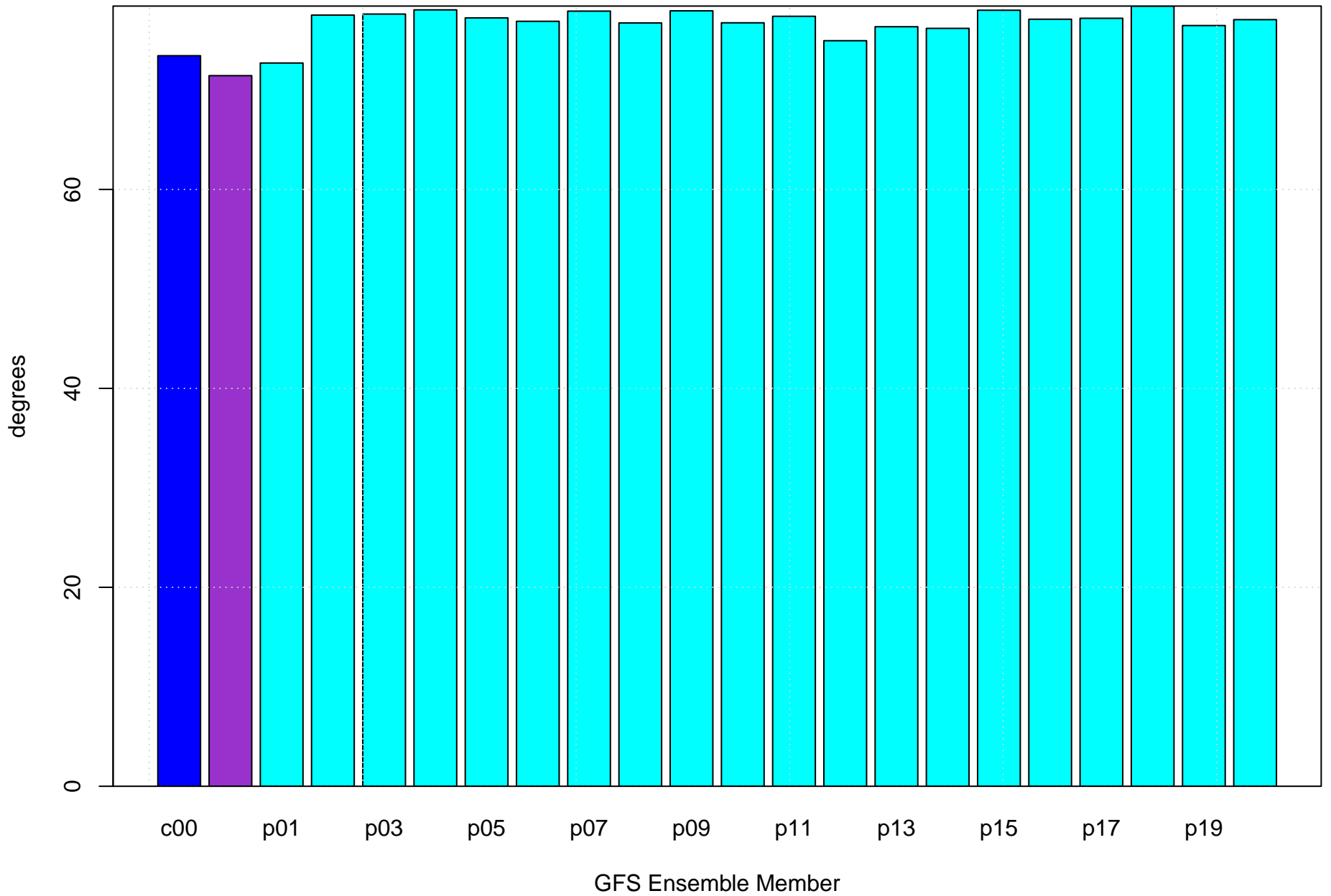
# Surface vector wind vector RMSE KLIT



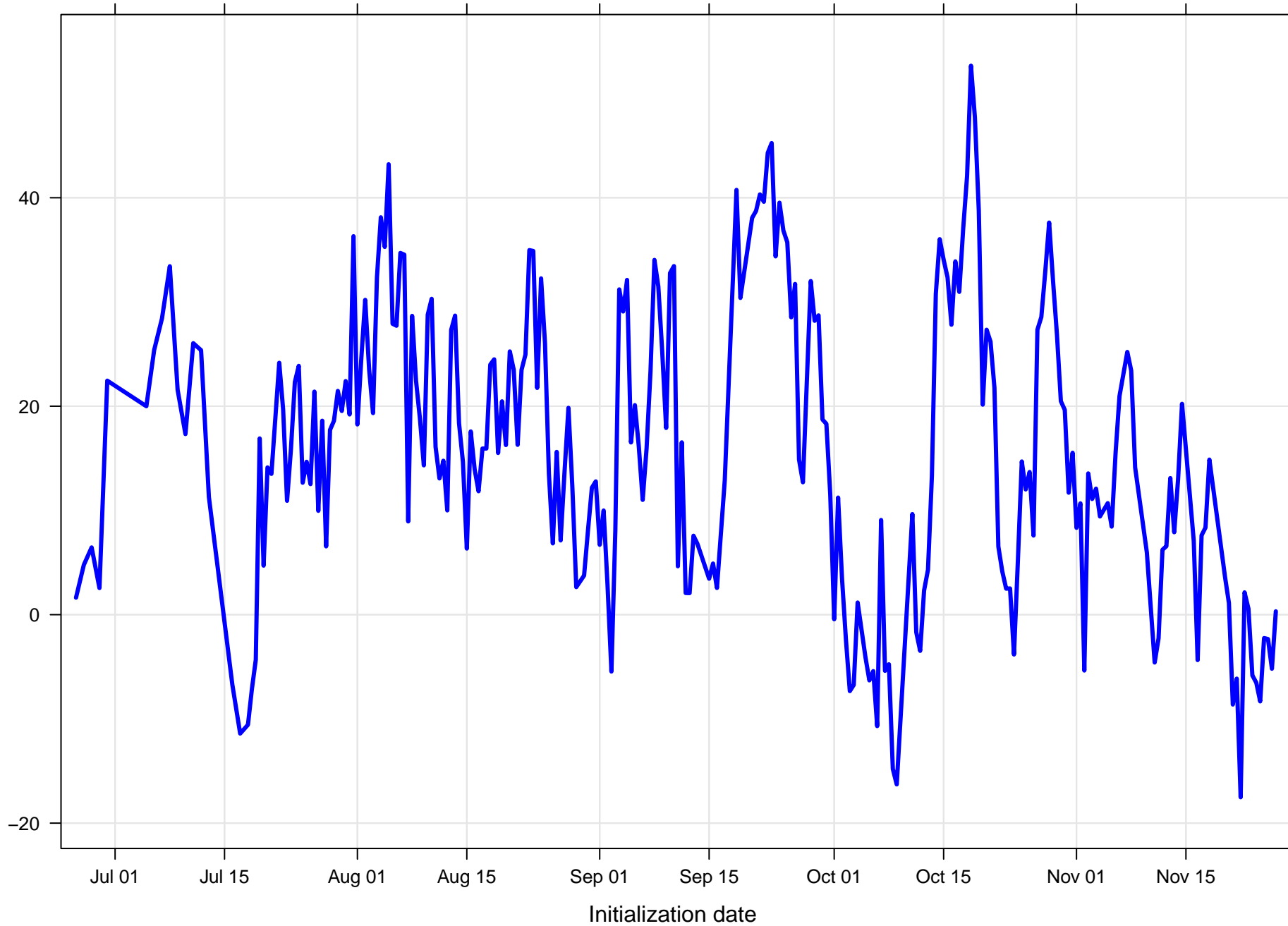
# Surface wind speed RMSE KLIT



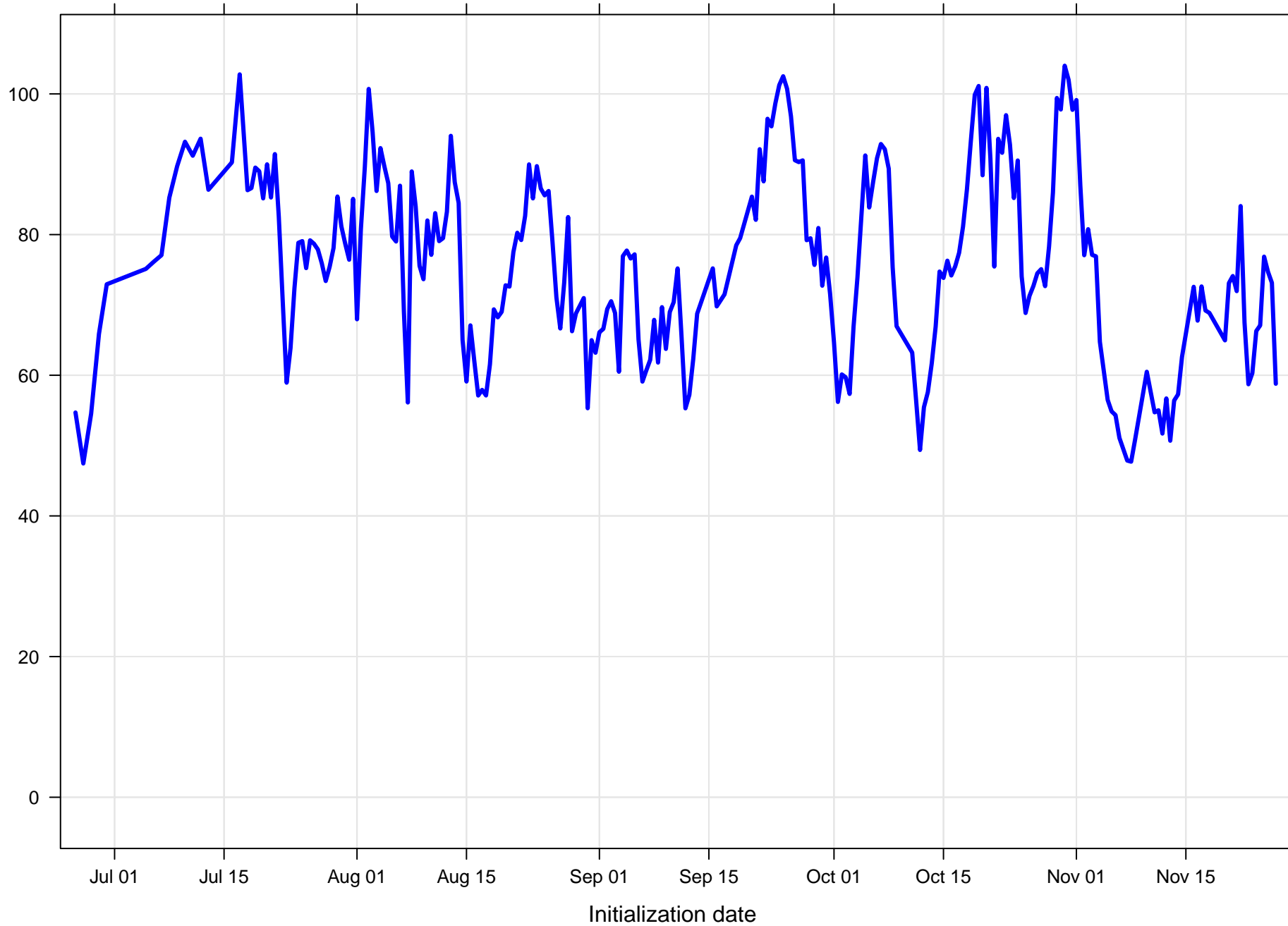
# Surface direction RMSE KLIT



Surface wind direction bias at KLIT all forecast hours and members

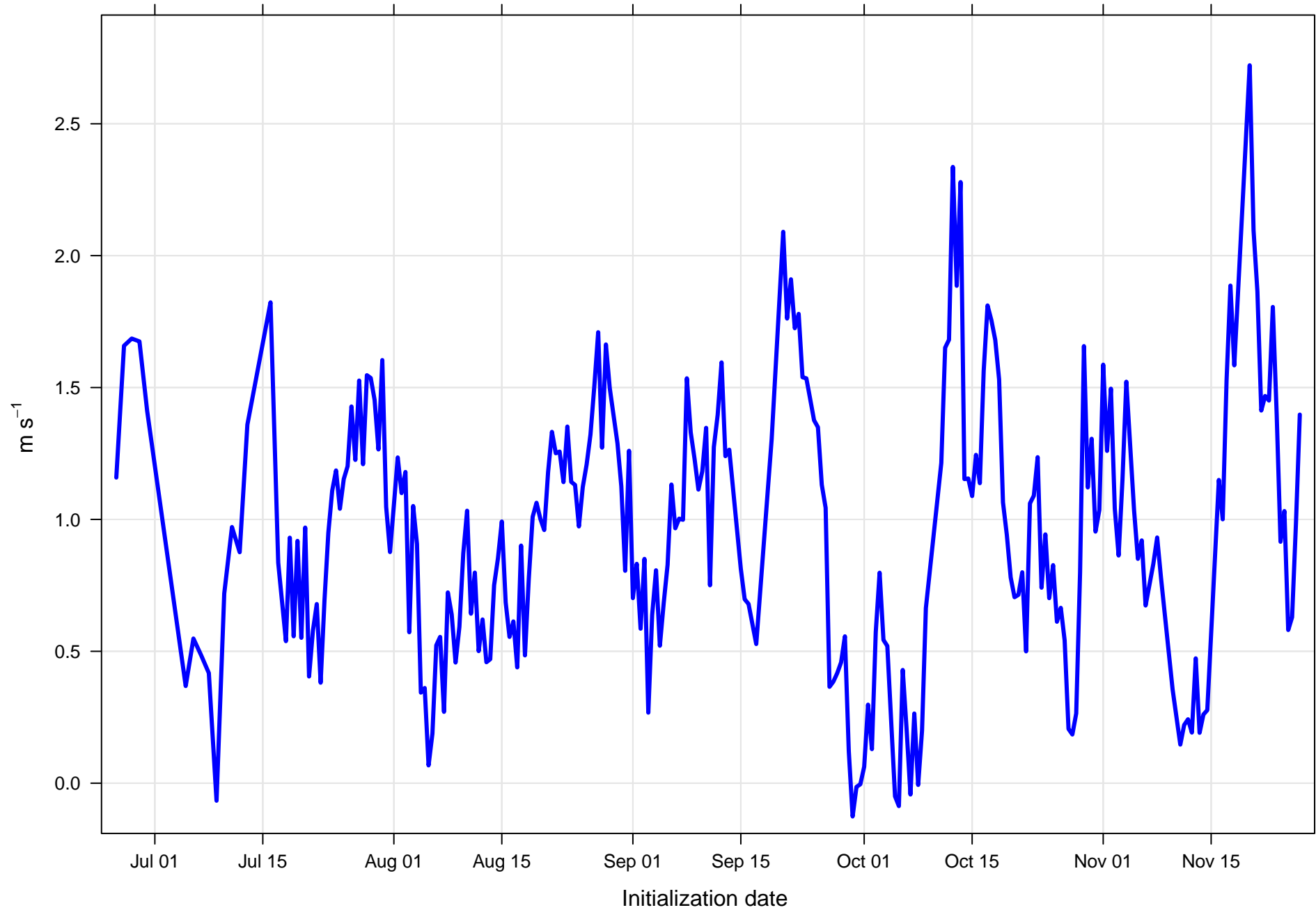


Surface wind direction RMSE at KLIT all forecast hours and members

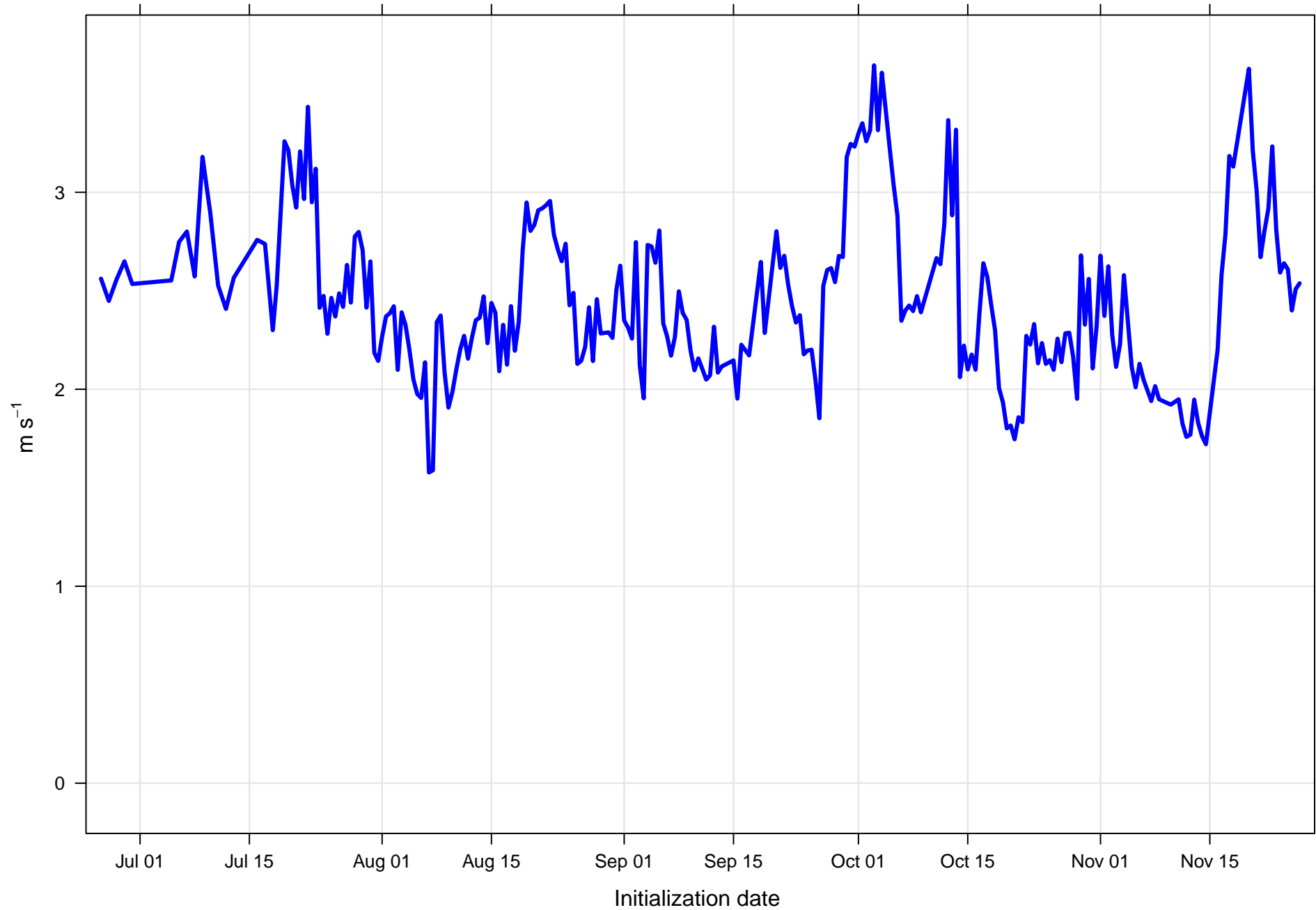




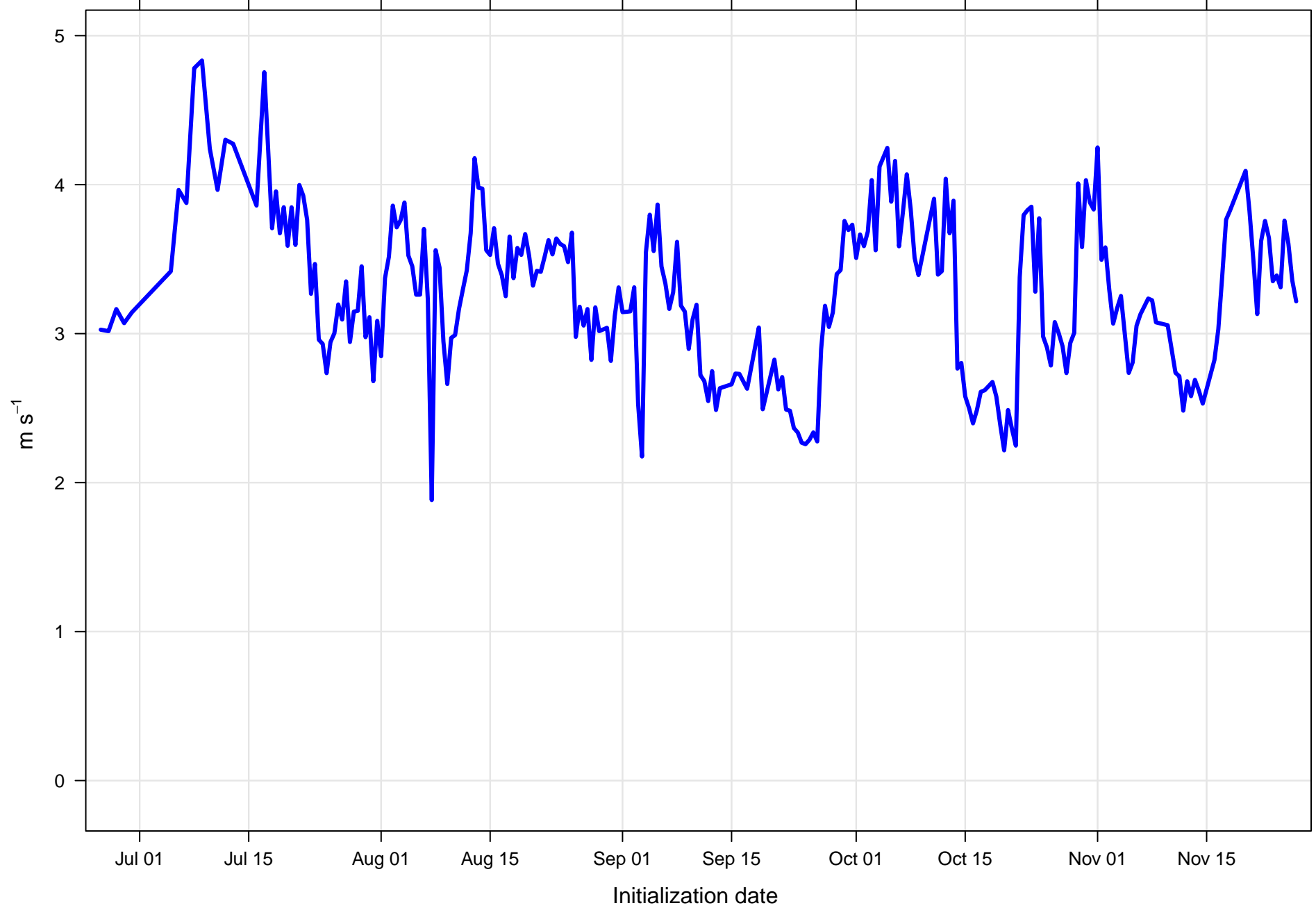
Surface wind speed bias at KLIT all forecast hours and members



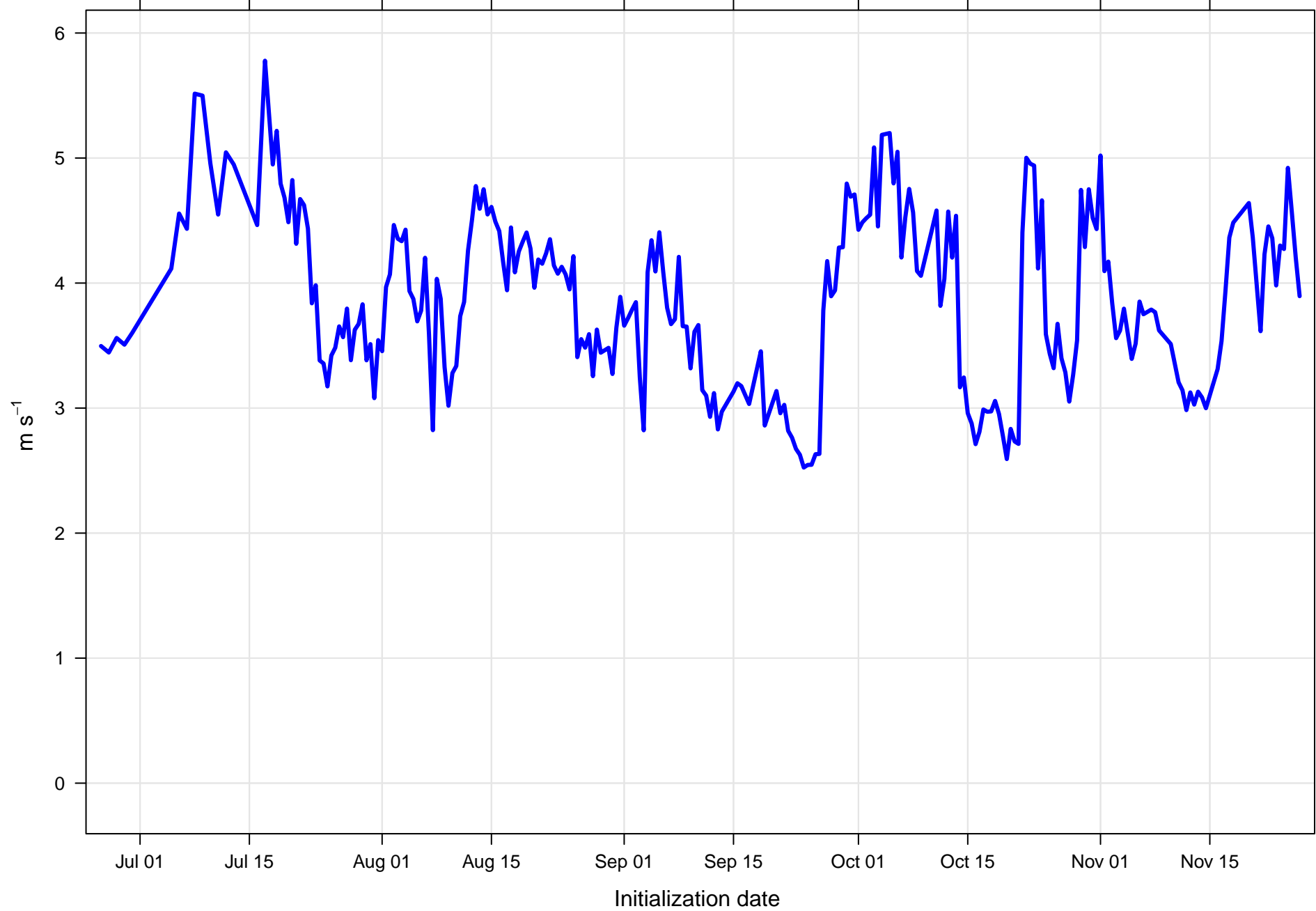
Surface wind speed RMSE at KLIT all forecast hours and members



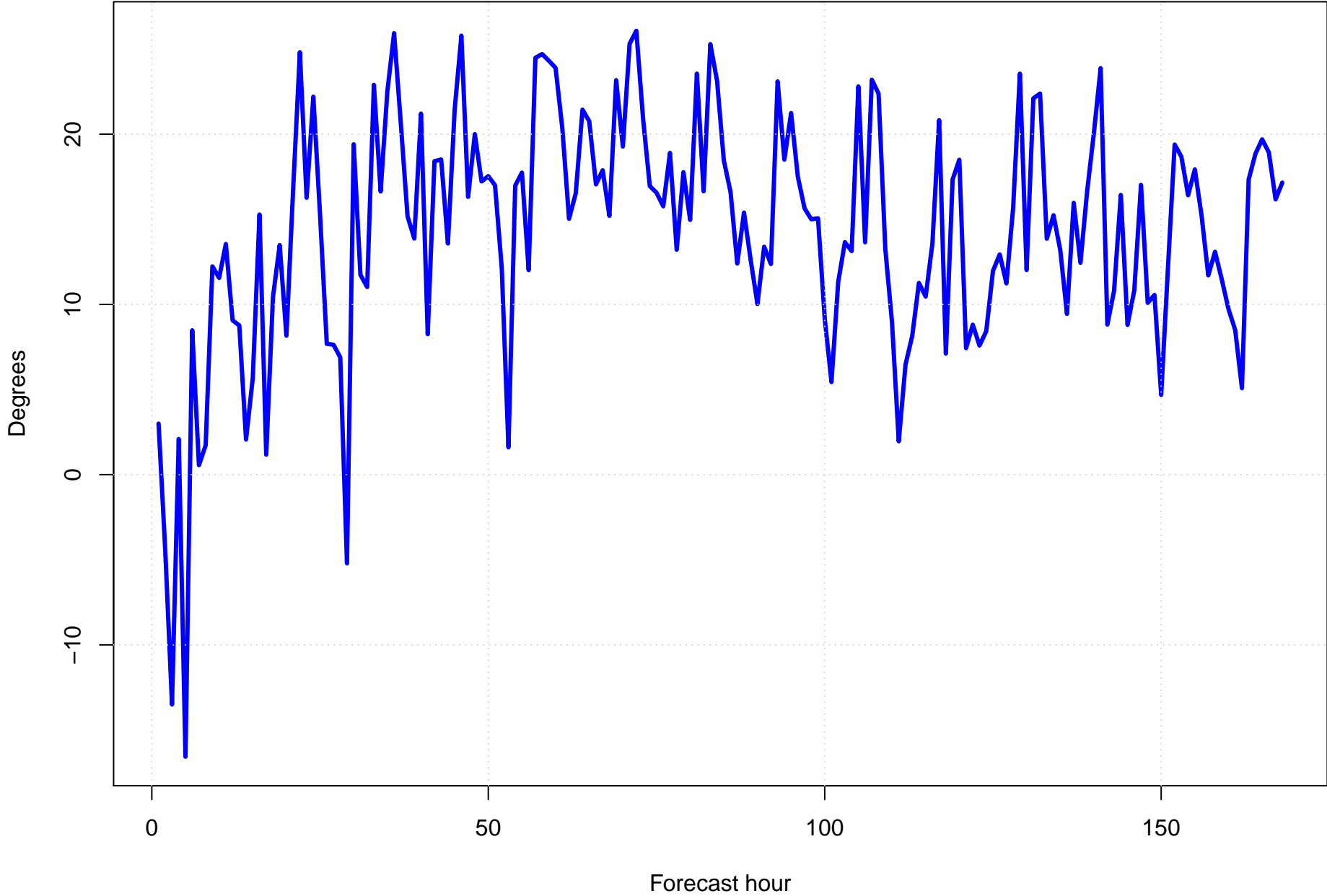
Surface vector wind mean error KLIT all forecast hours and members



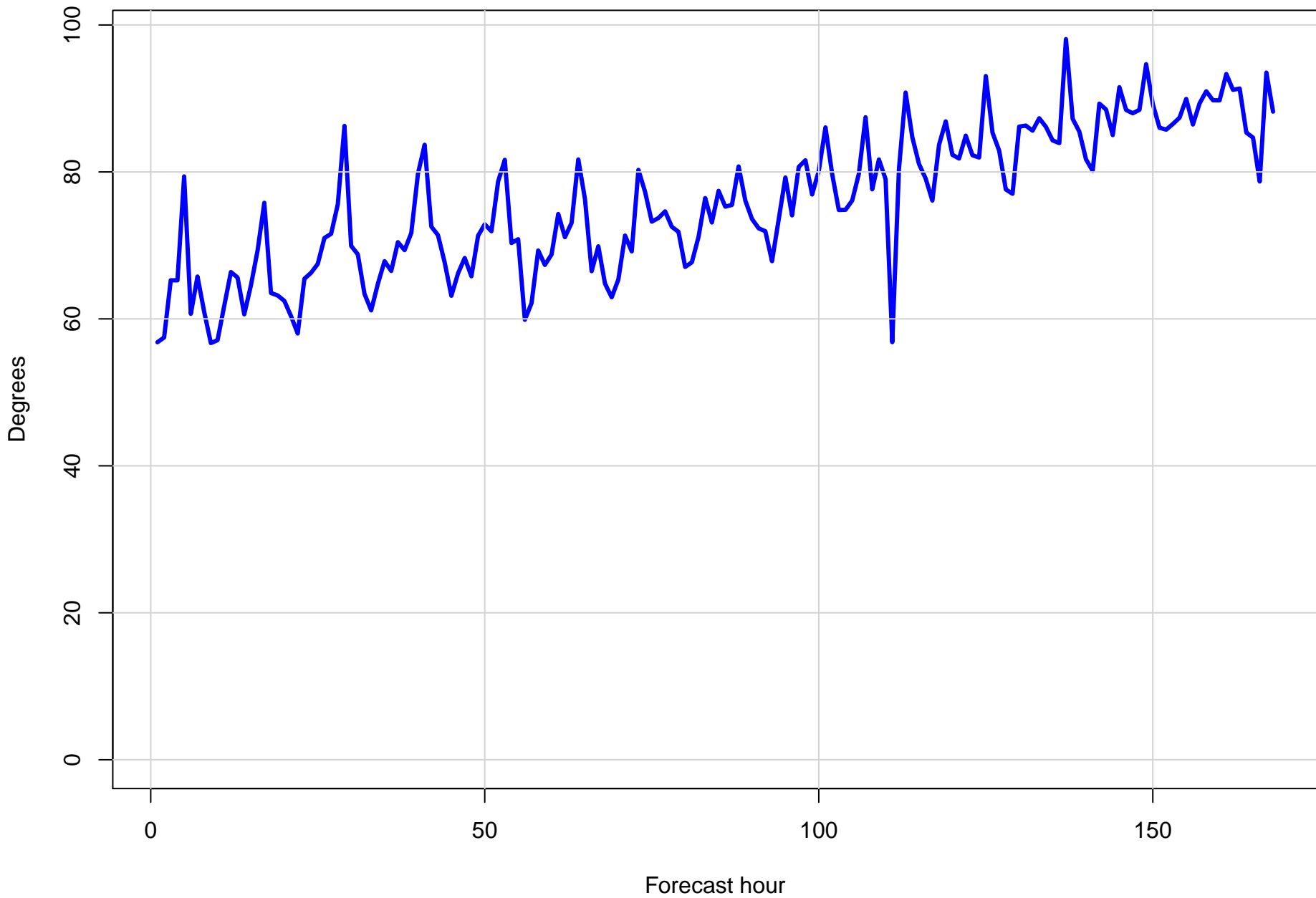
Surface vector wind RMSE at KLIT all forecast hours and members



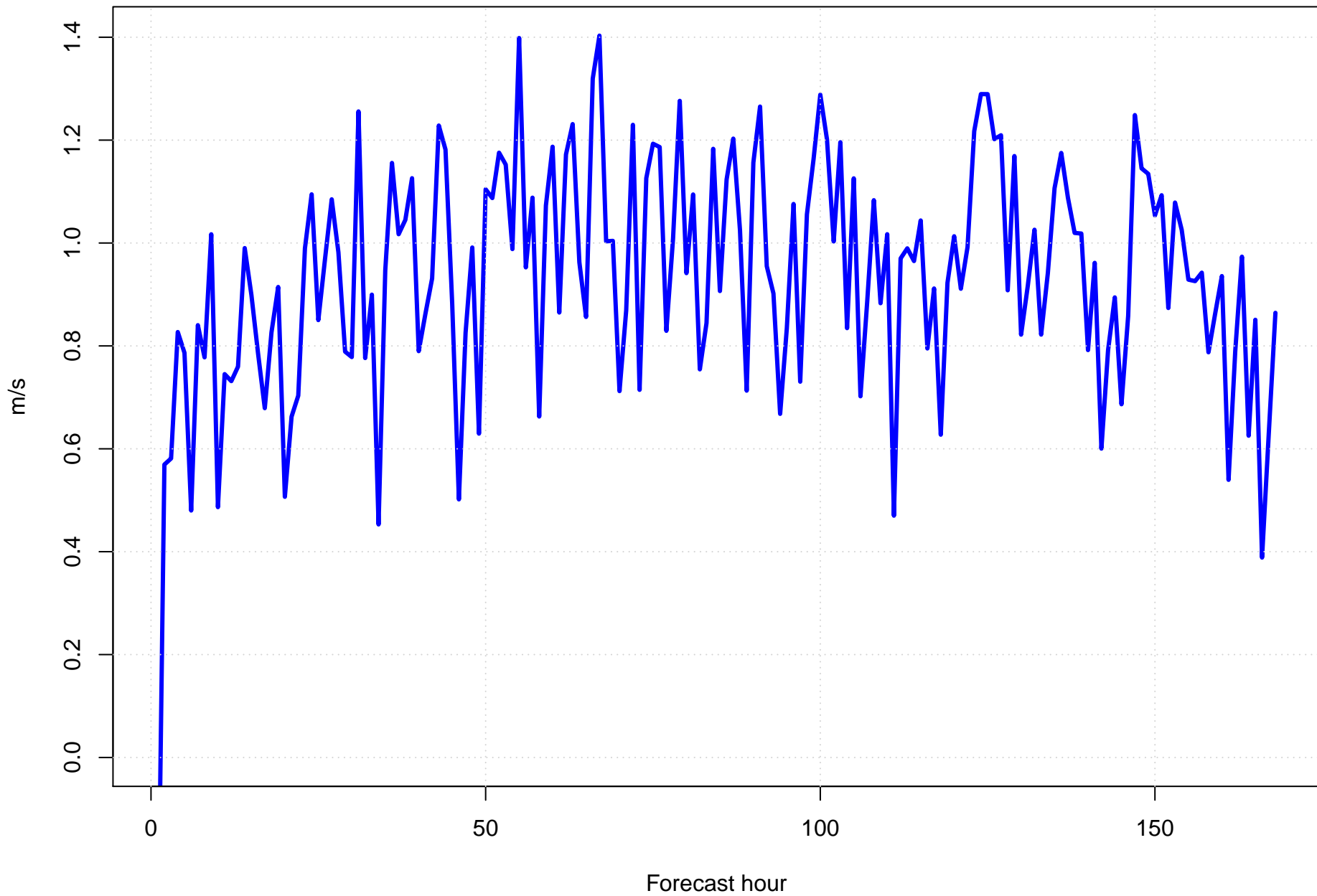
Surface wind direction bias at KLIT by forecast hour



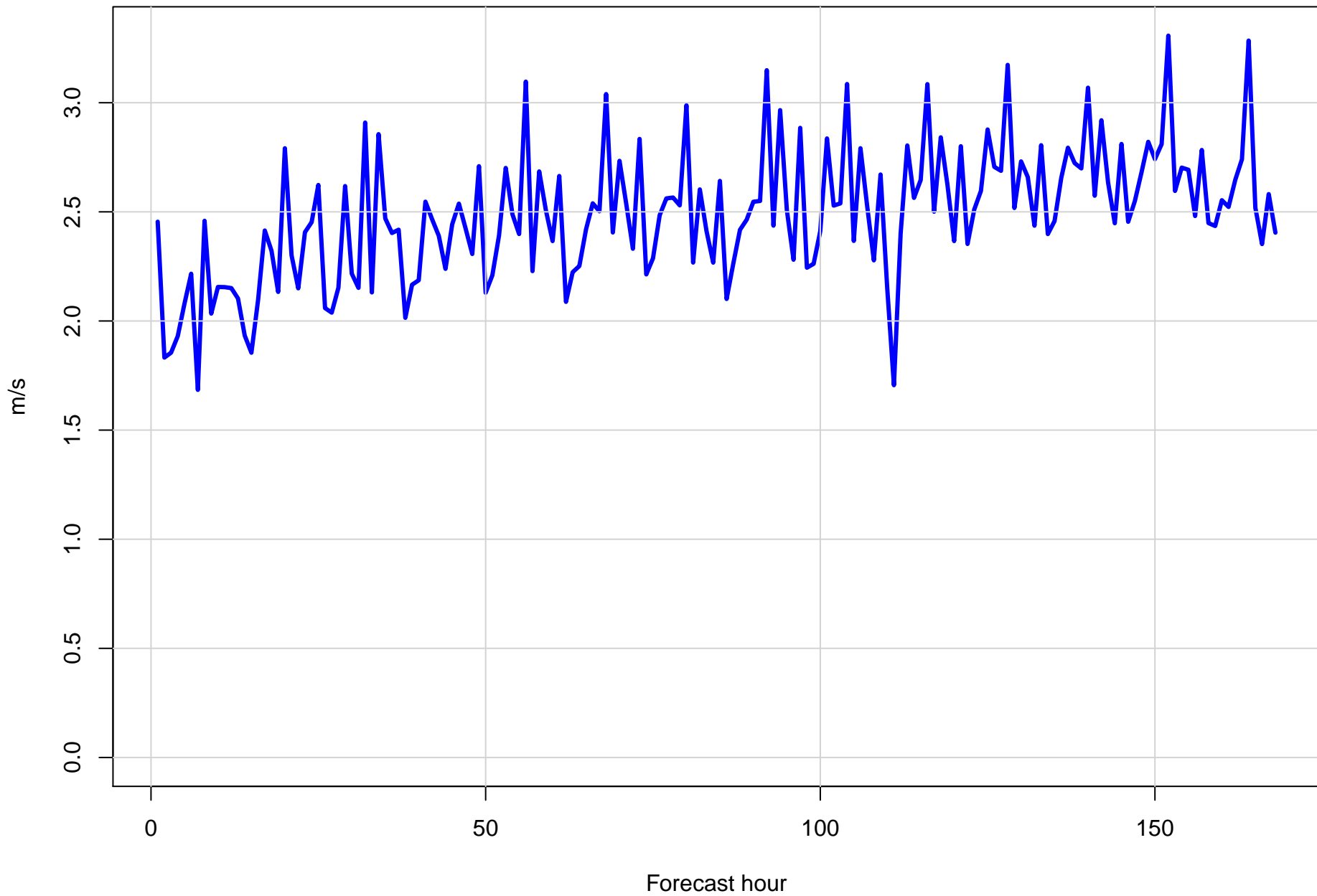
Surface wind direction RMSE at KLIT by forecast hour



Surface wind speed bias at KLIT by forecast hour

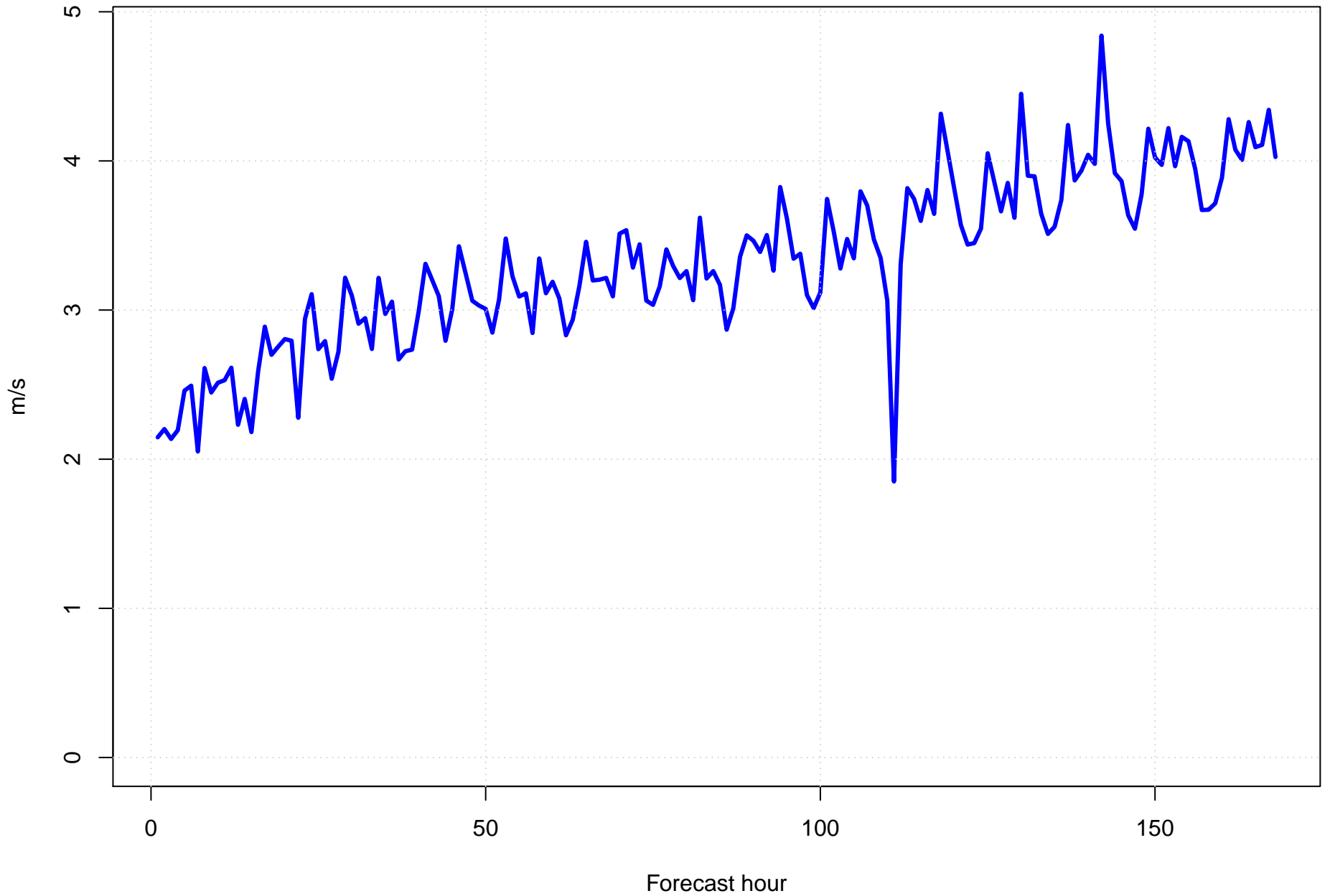


Surface wind speed RMSE at KLIT by forecast hour

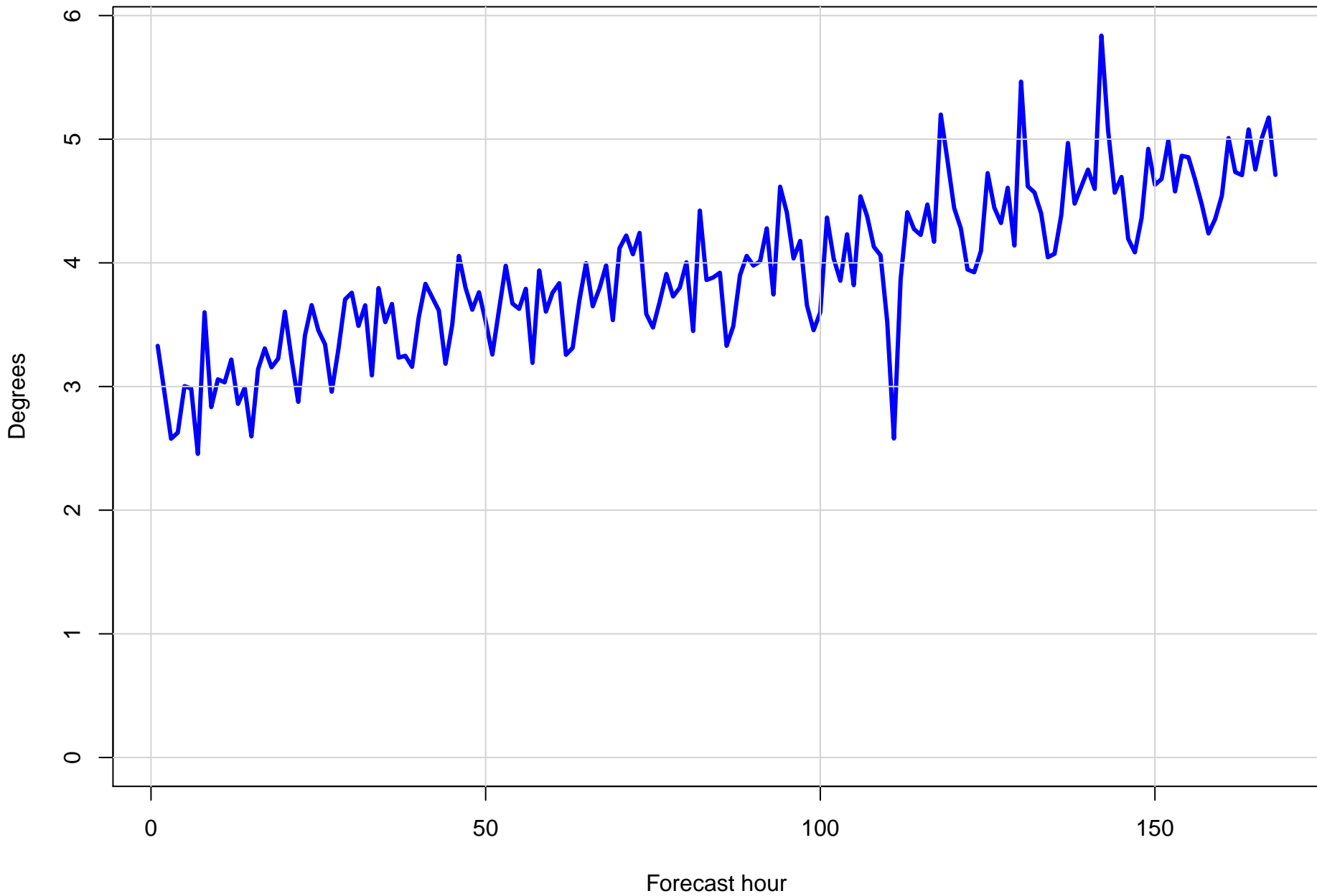




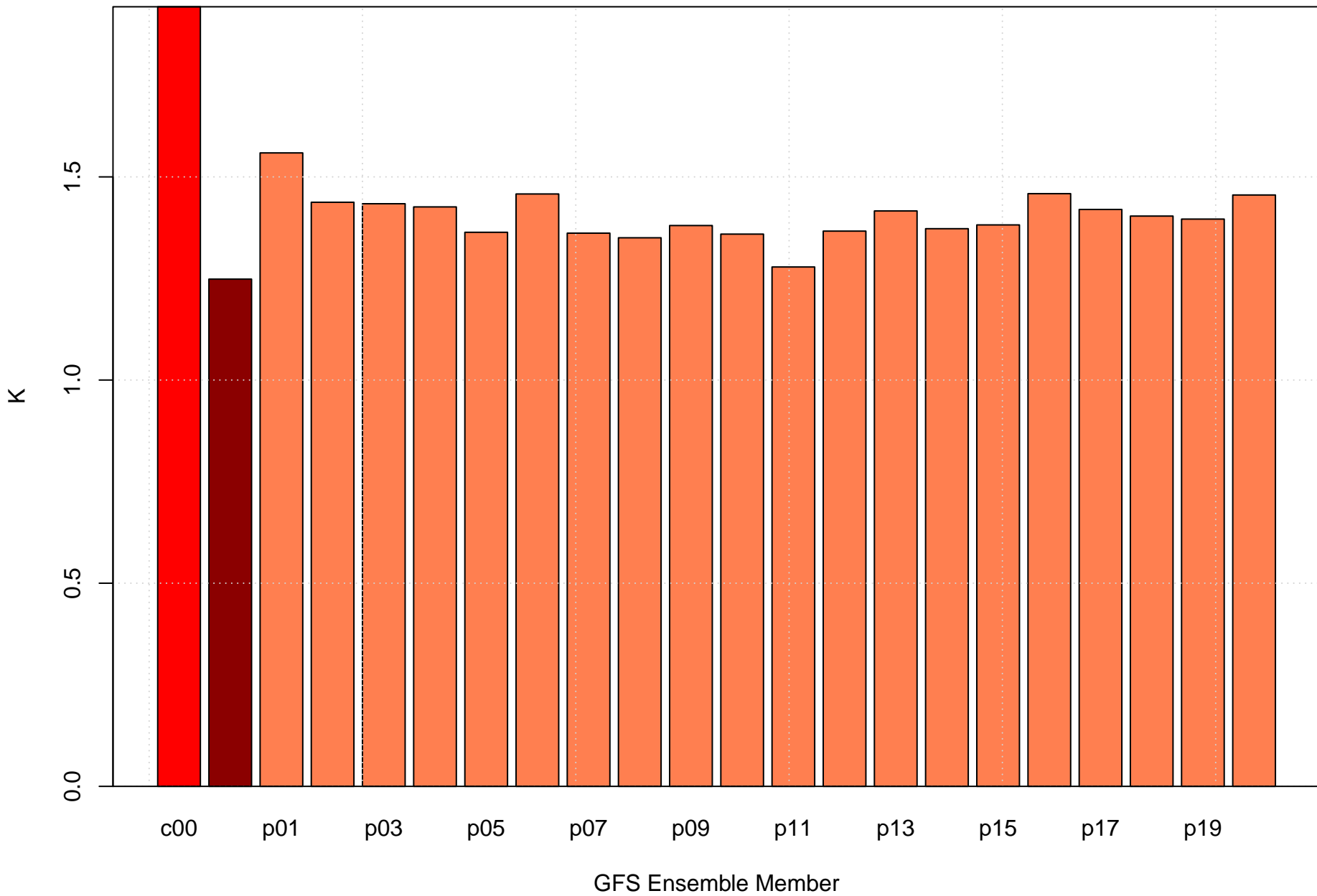
Surface vector wind error at KLIT by forecast hour



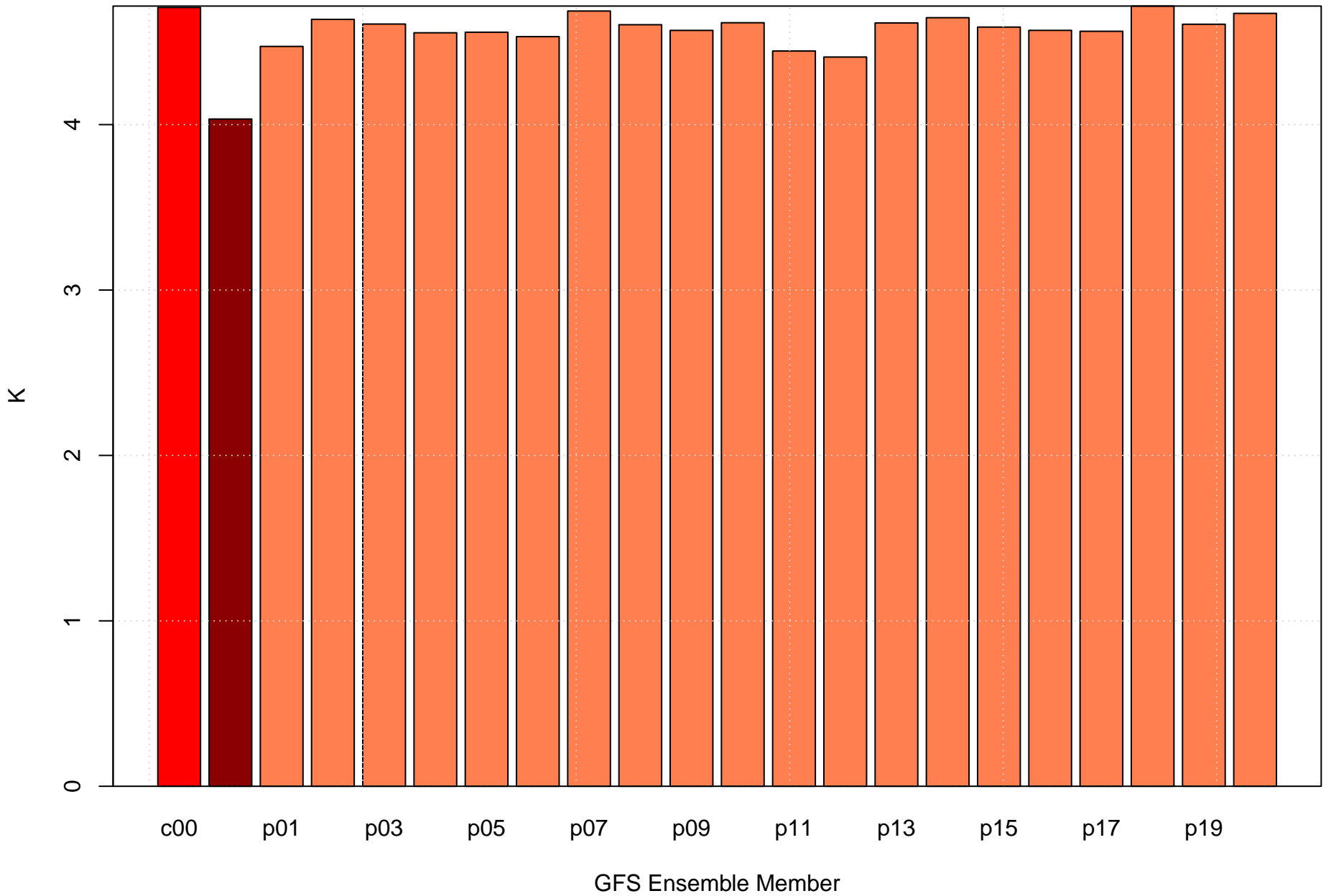
Surface vector wind RMSE at KLIT by forecast hour



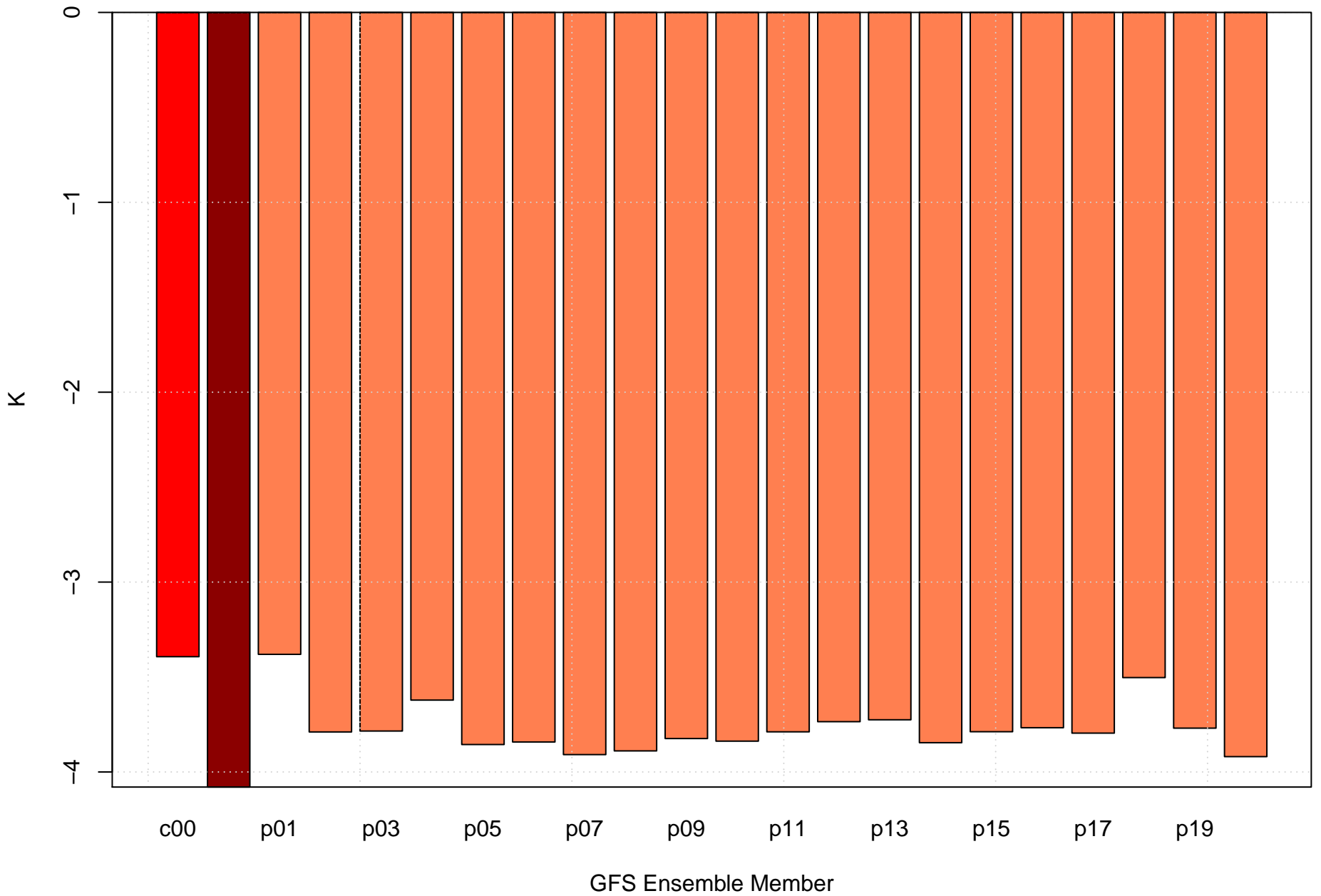
# Surface temperature bias at KLIT



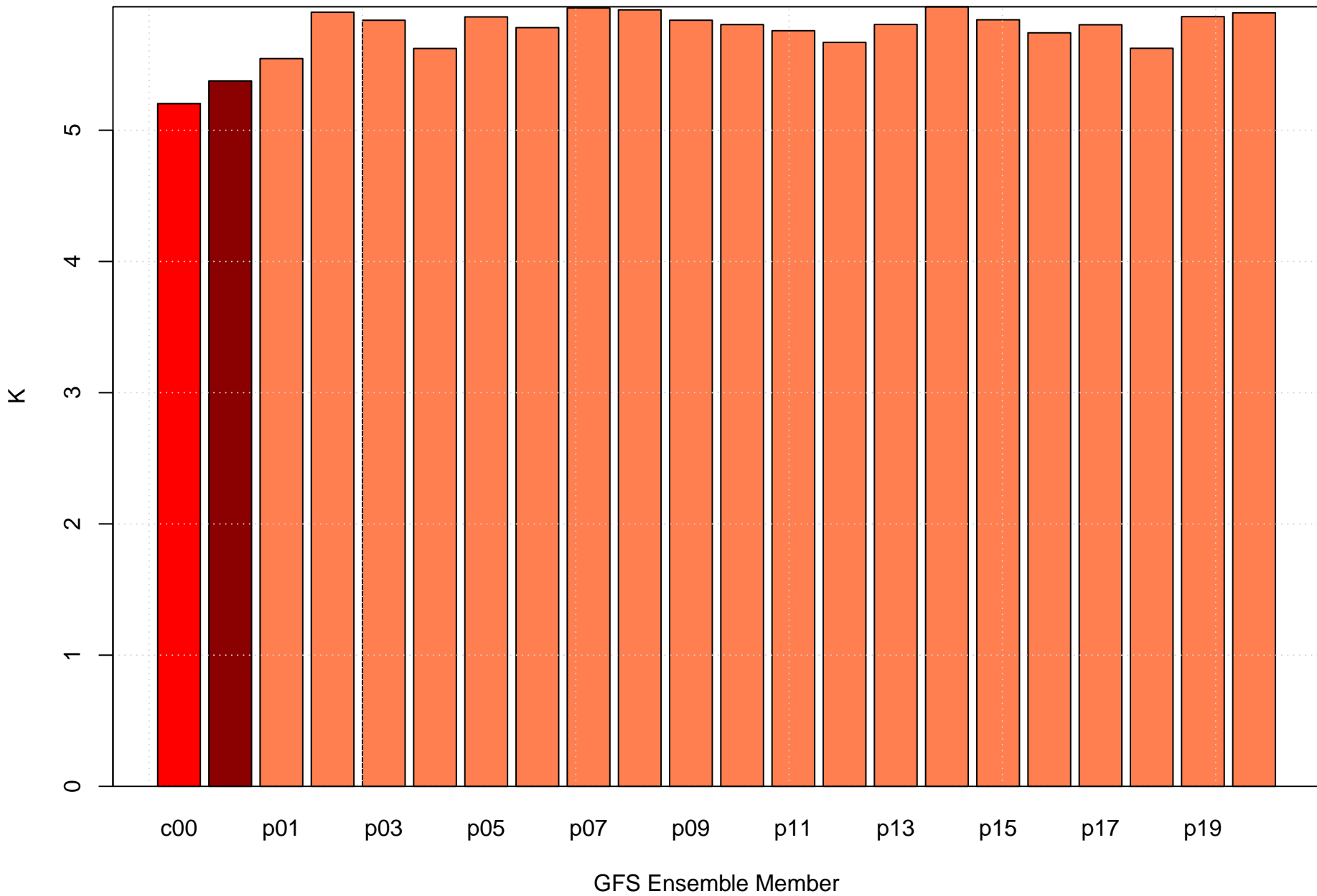
# Surface temperature RMSE at KLIT



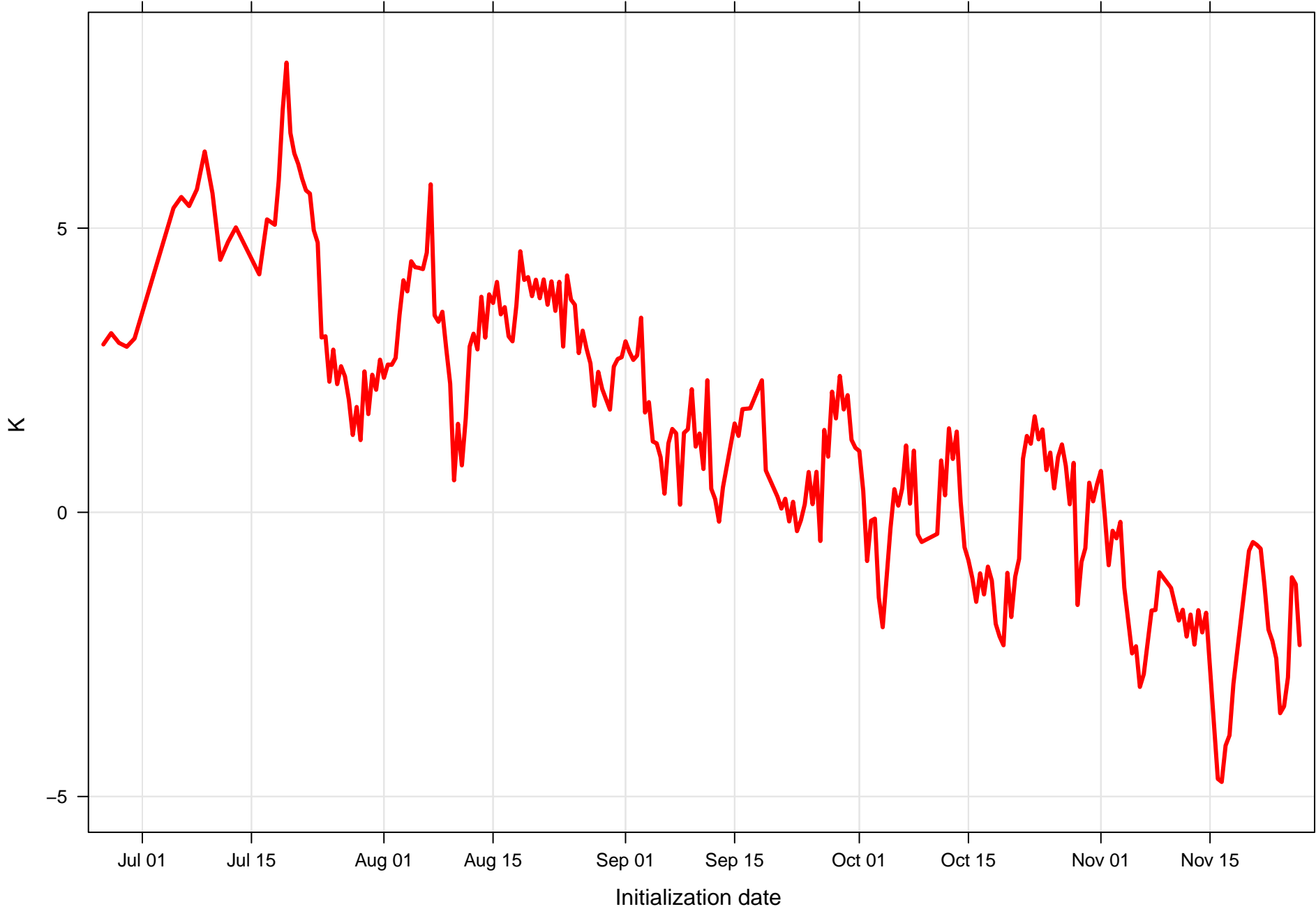
# Surface dew point bias at KLIT



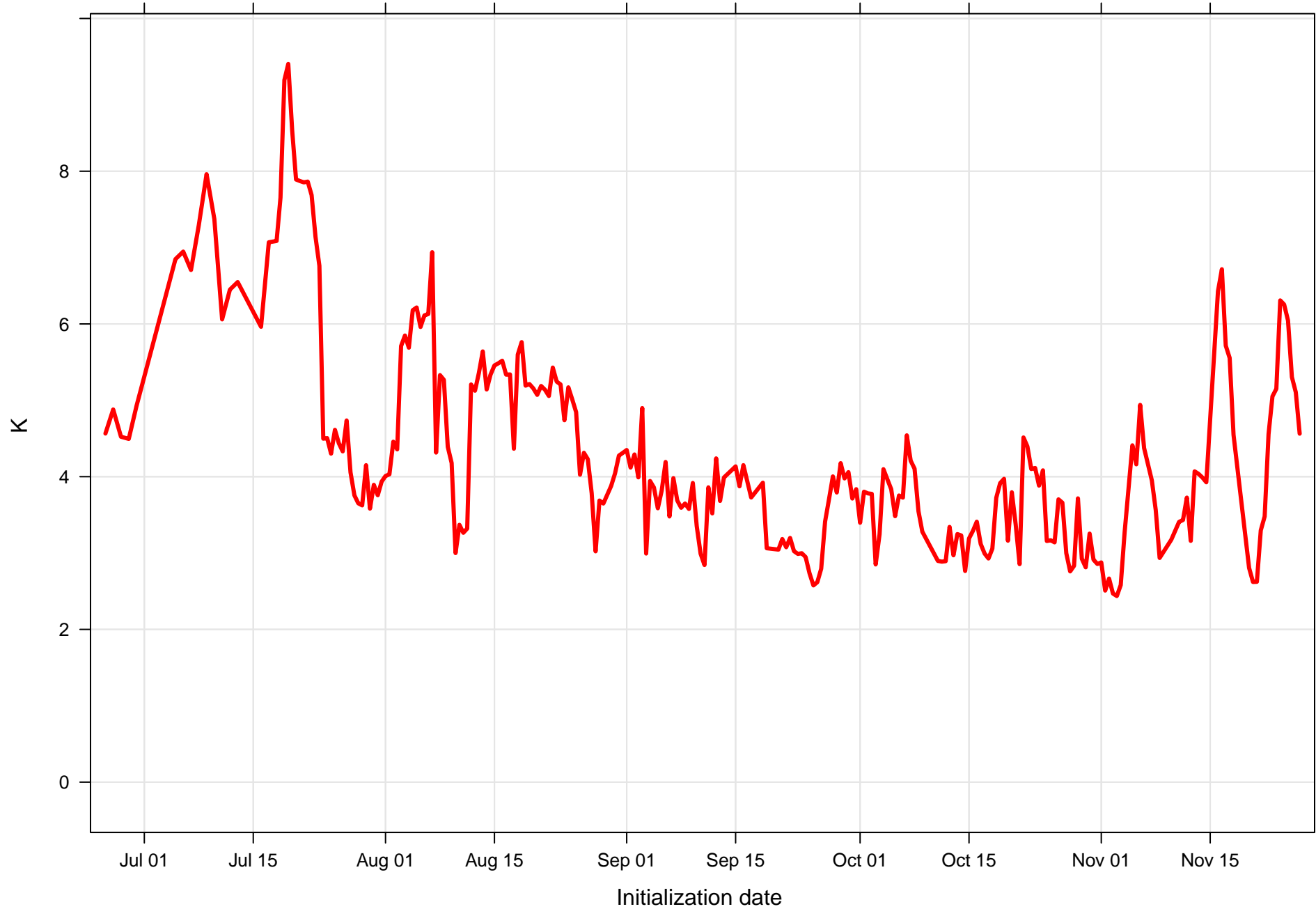
# Surface dew point RMSE at KLIT



Surface temperature bias at KLIT all forecast hours and members

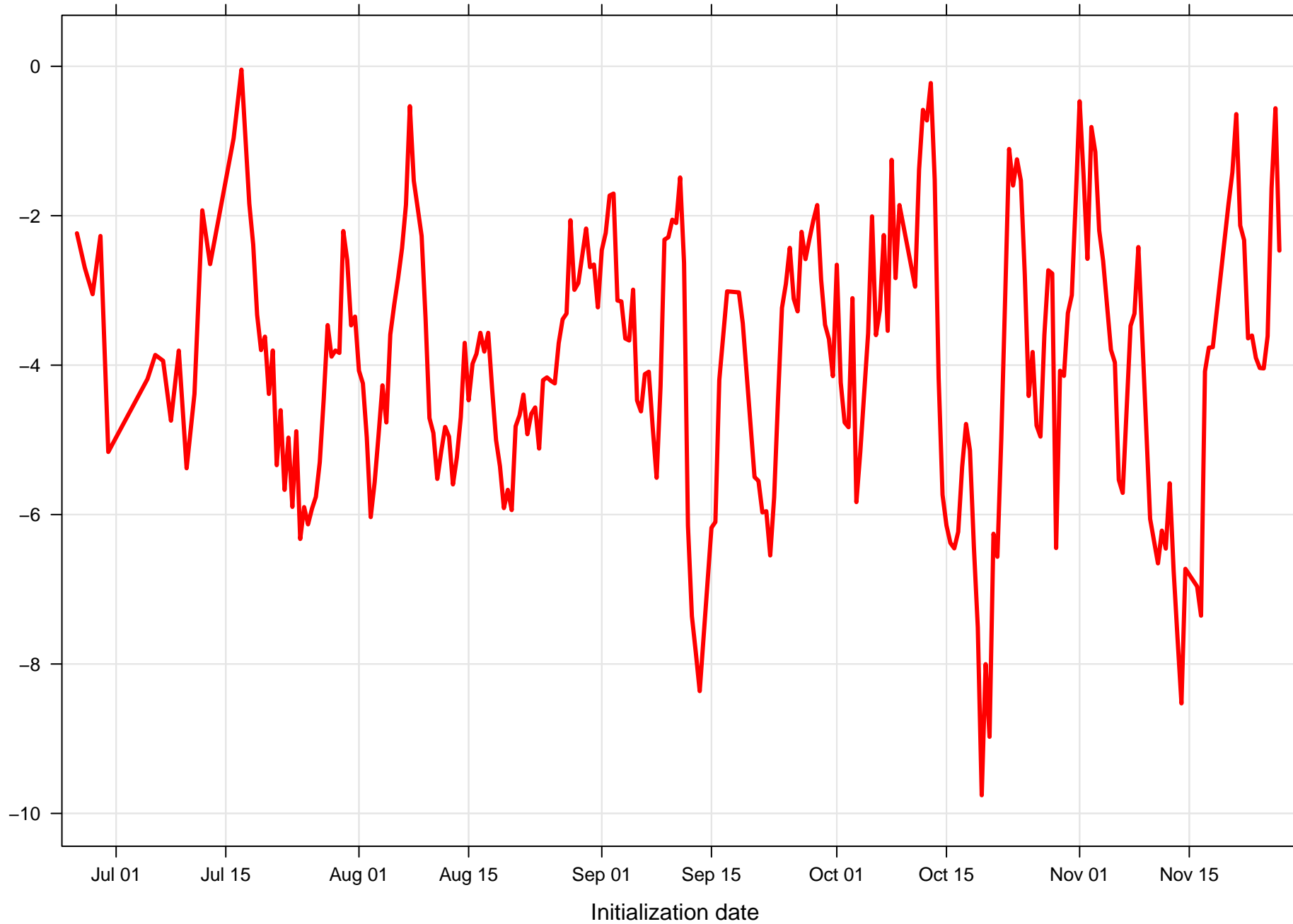


Surface temperature RMSE at KLIT all forecast hours and members

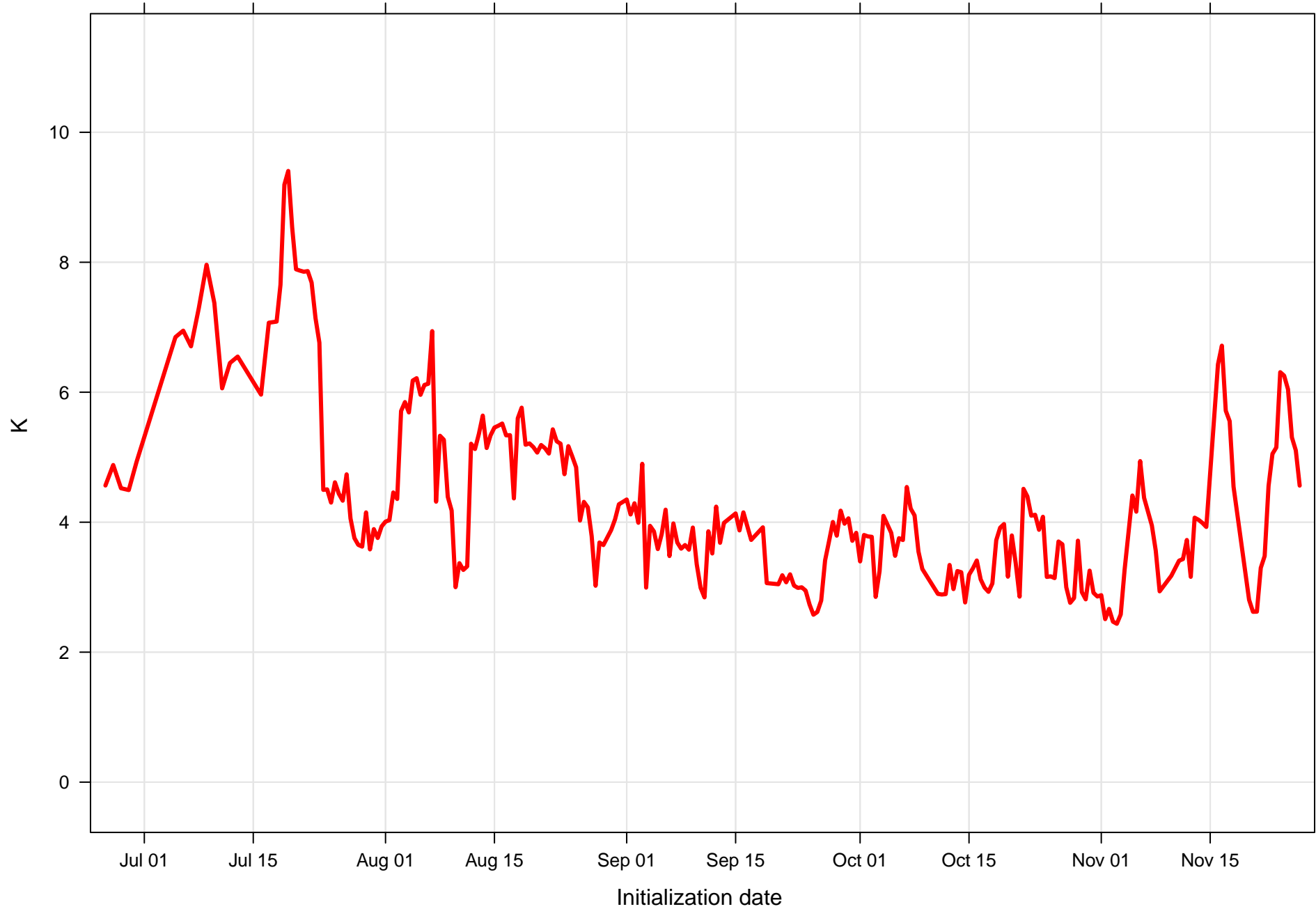




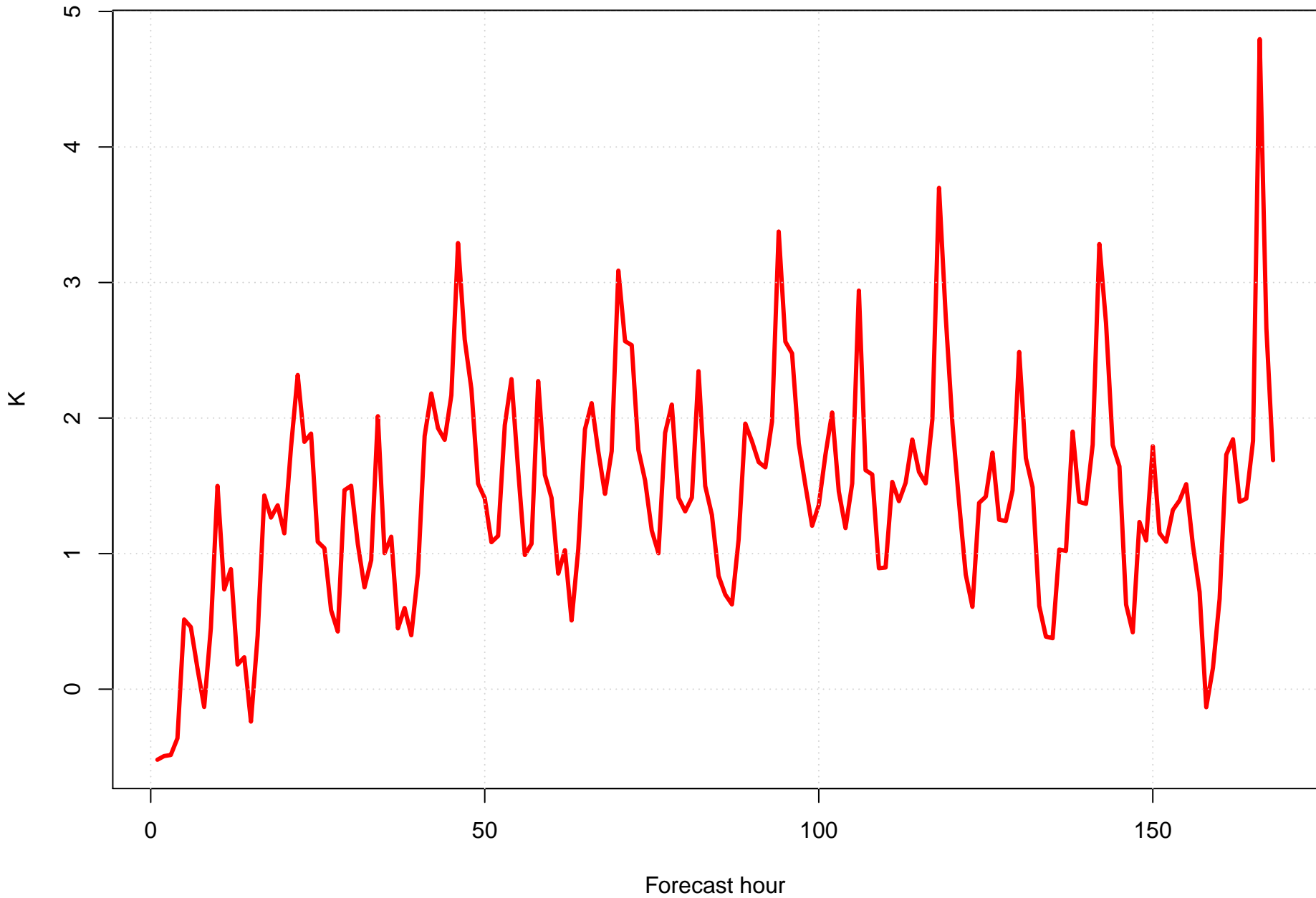
Surface dew point bias at KLIT all forecast hours and members



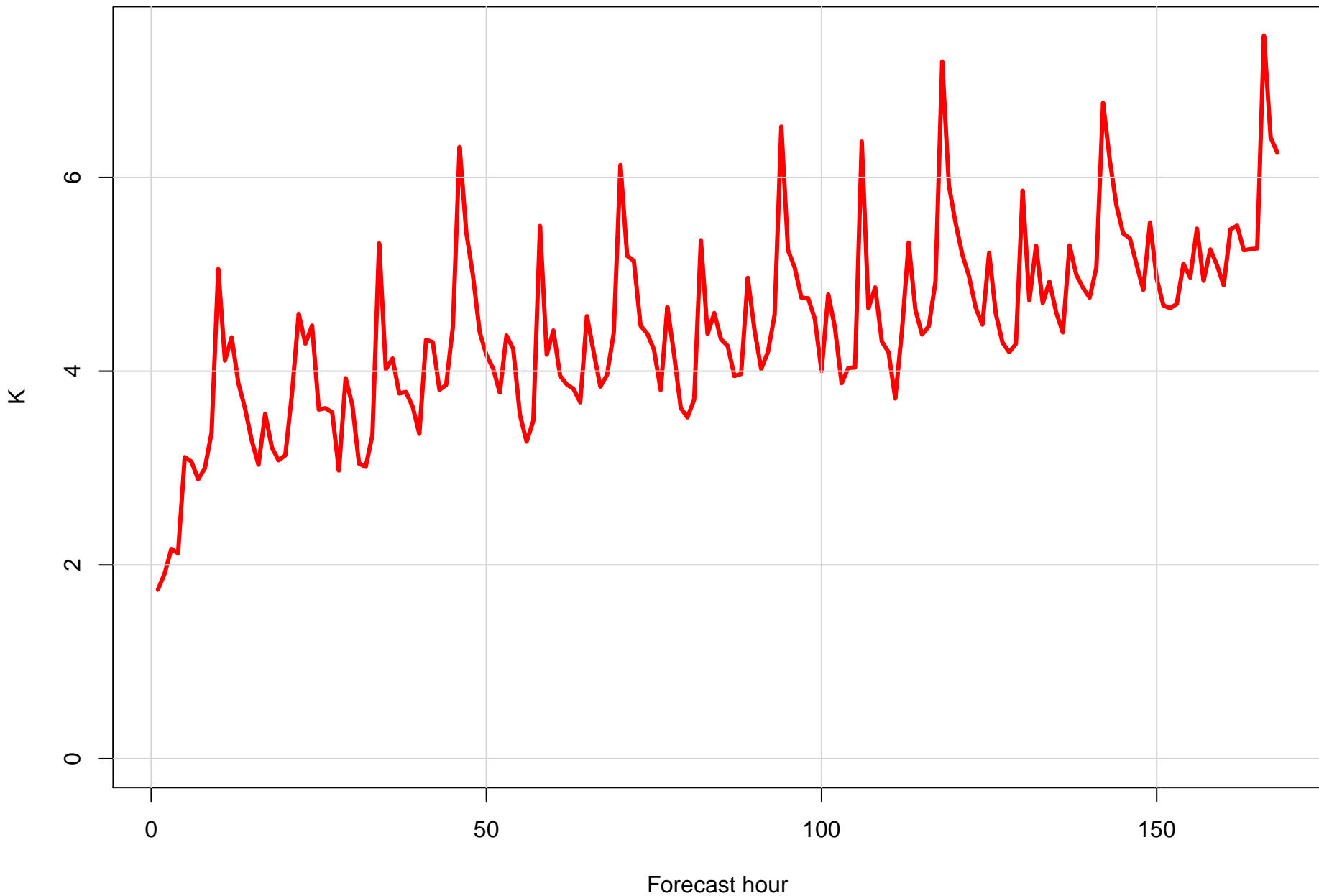
Surface dew point RMSE at KLIT all forecast hours and members



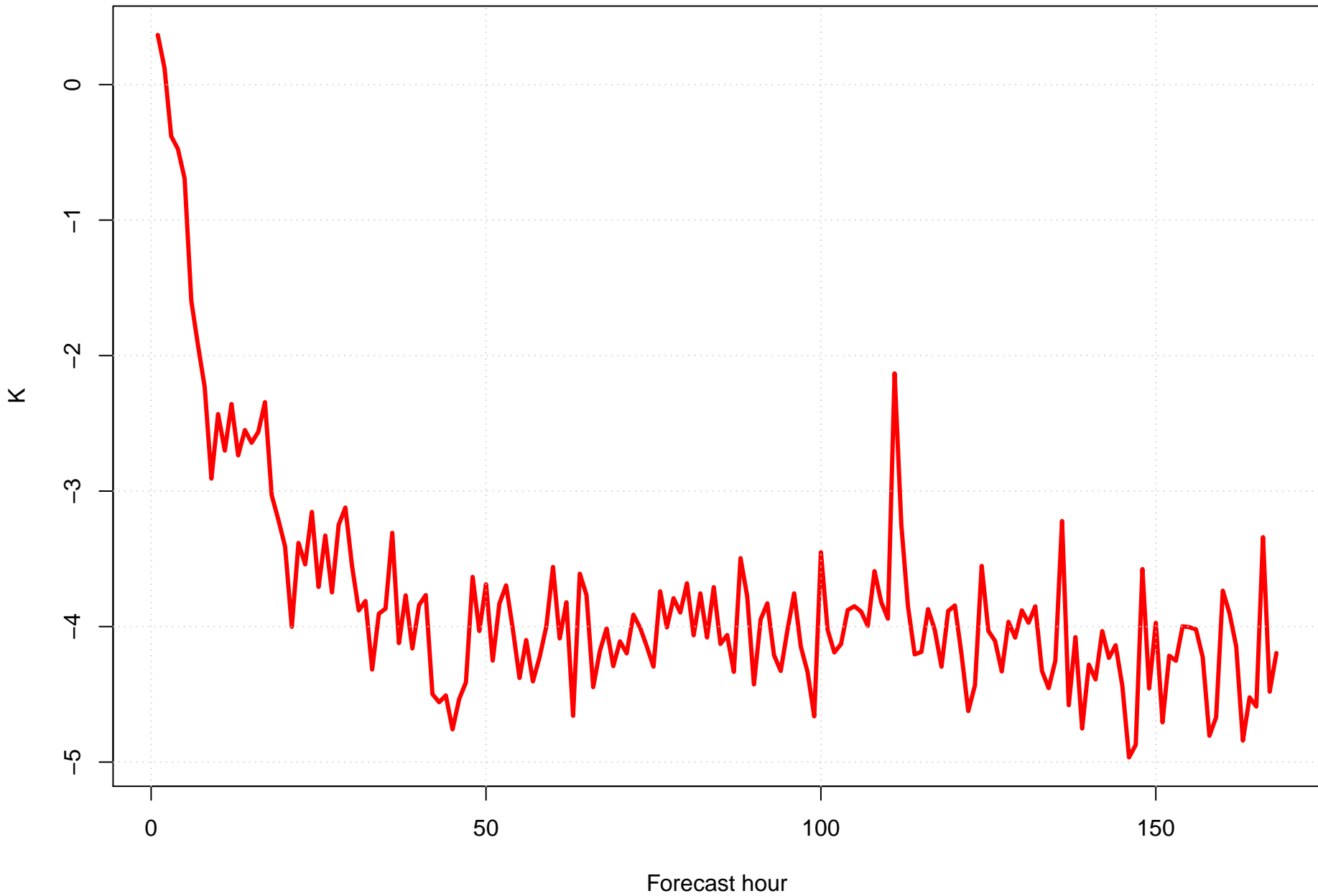
Surface temperature bias at KLIT by forecast hour



Surface temperature RMSE at KLIT by forecast hour



Surface dew point bias at KLIT by forecast hour



Surface dew point RMSE at KLIT by forecast hour

