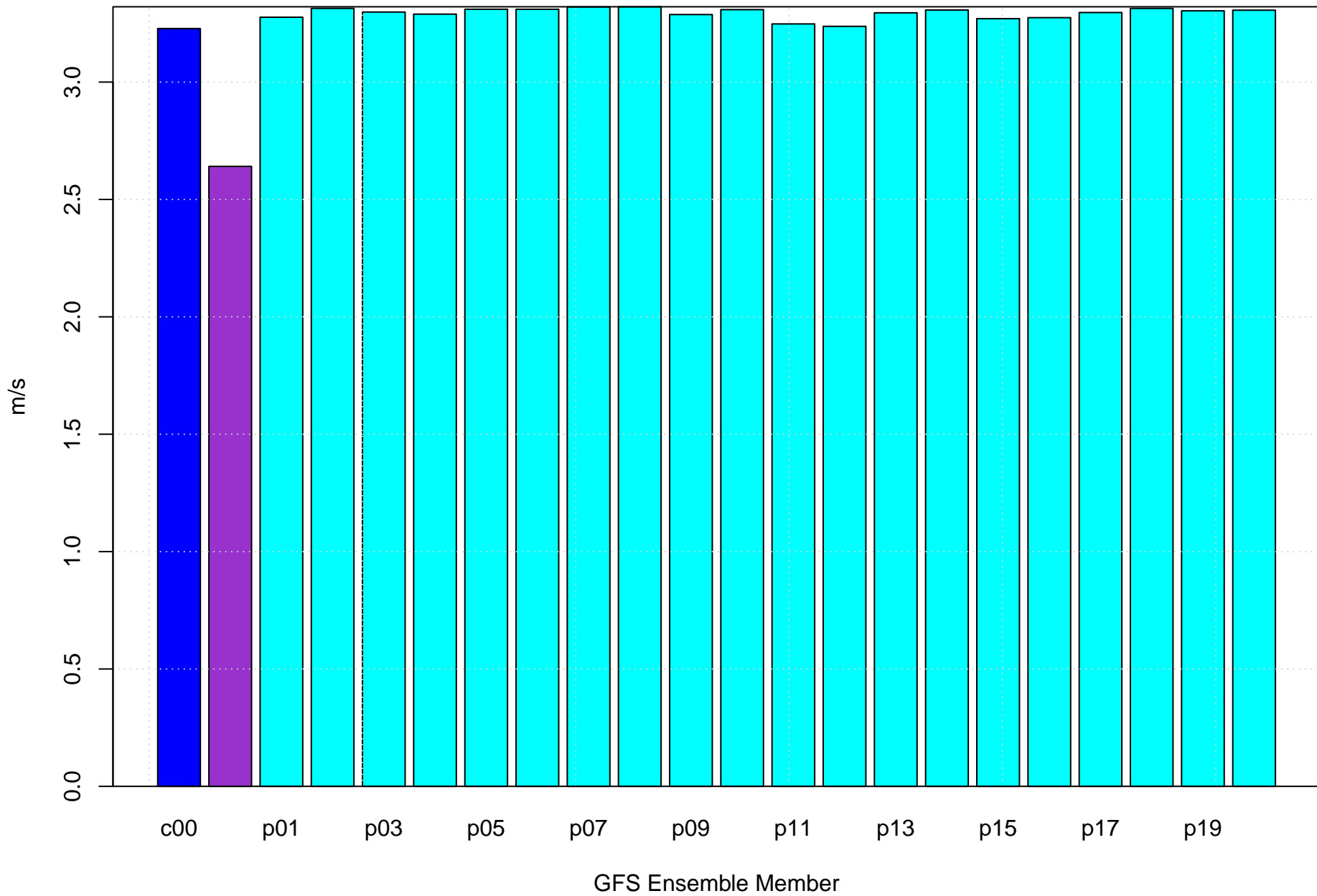
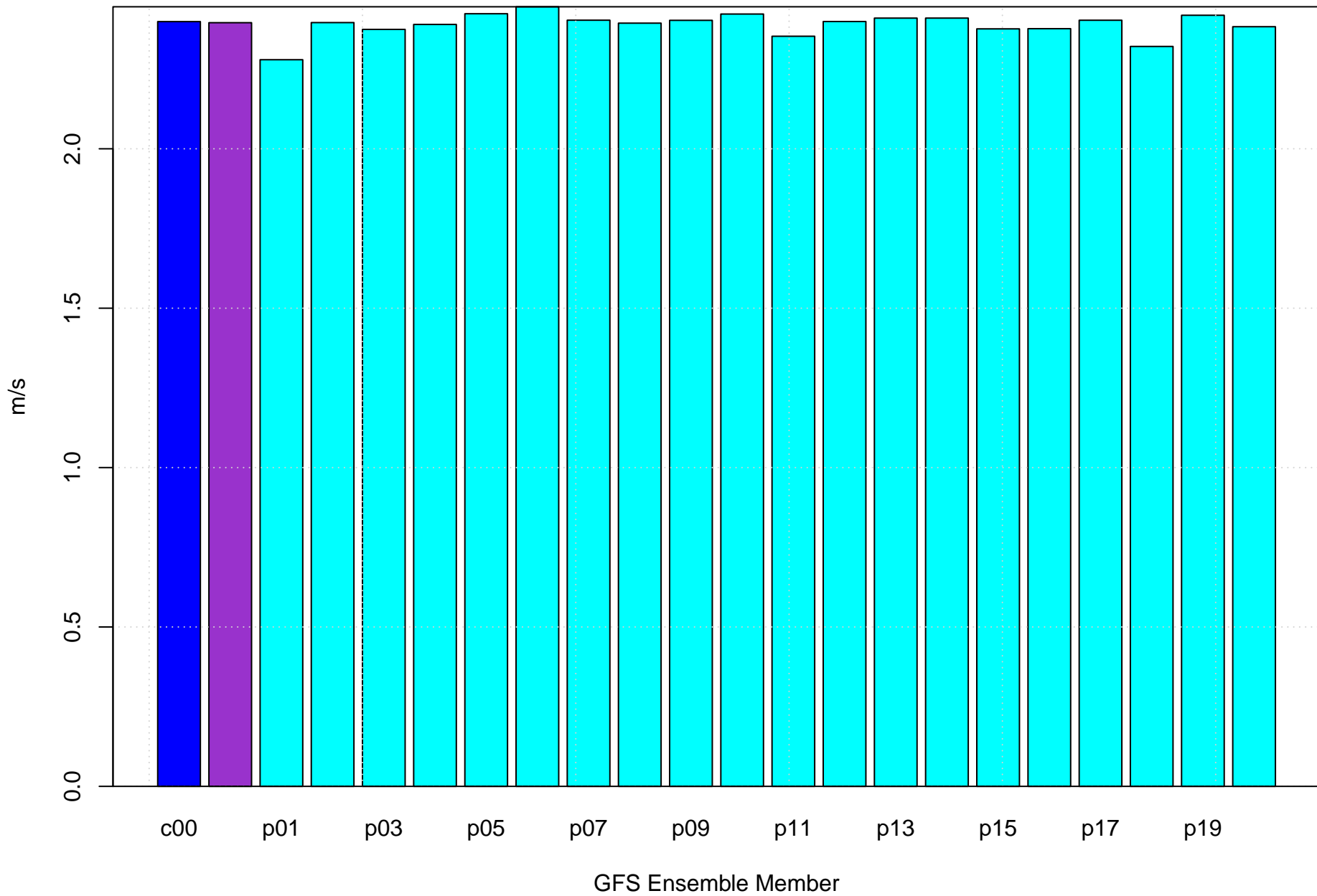


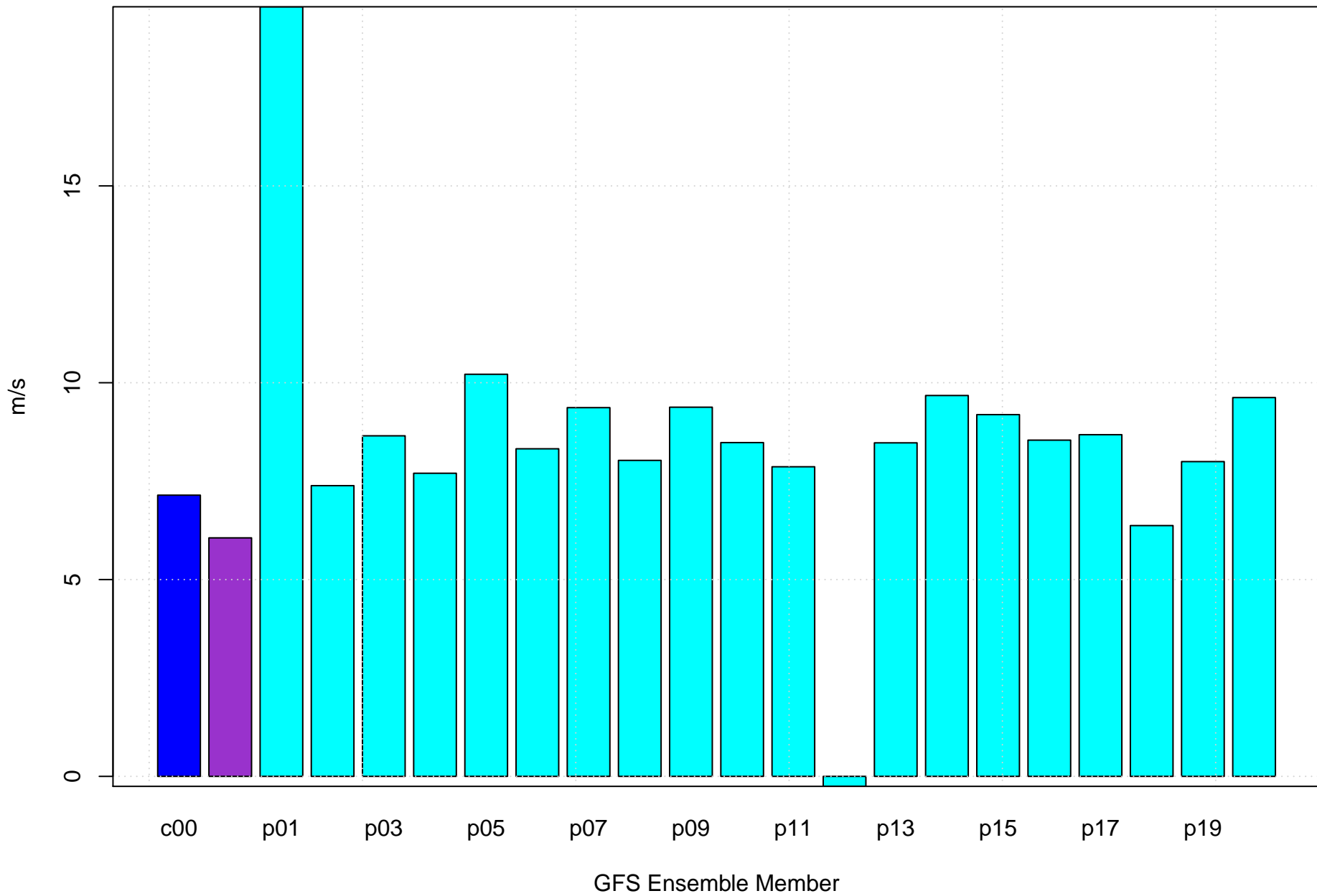
# Mean vector surface wind error KMRC



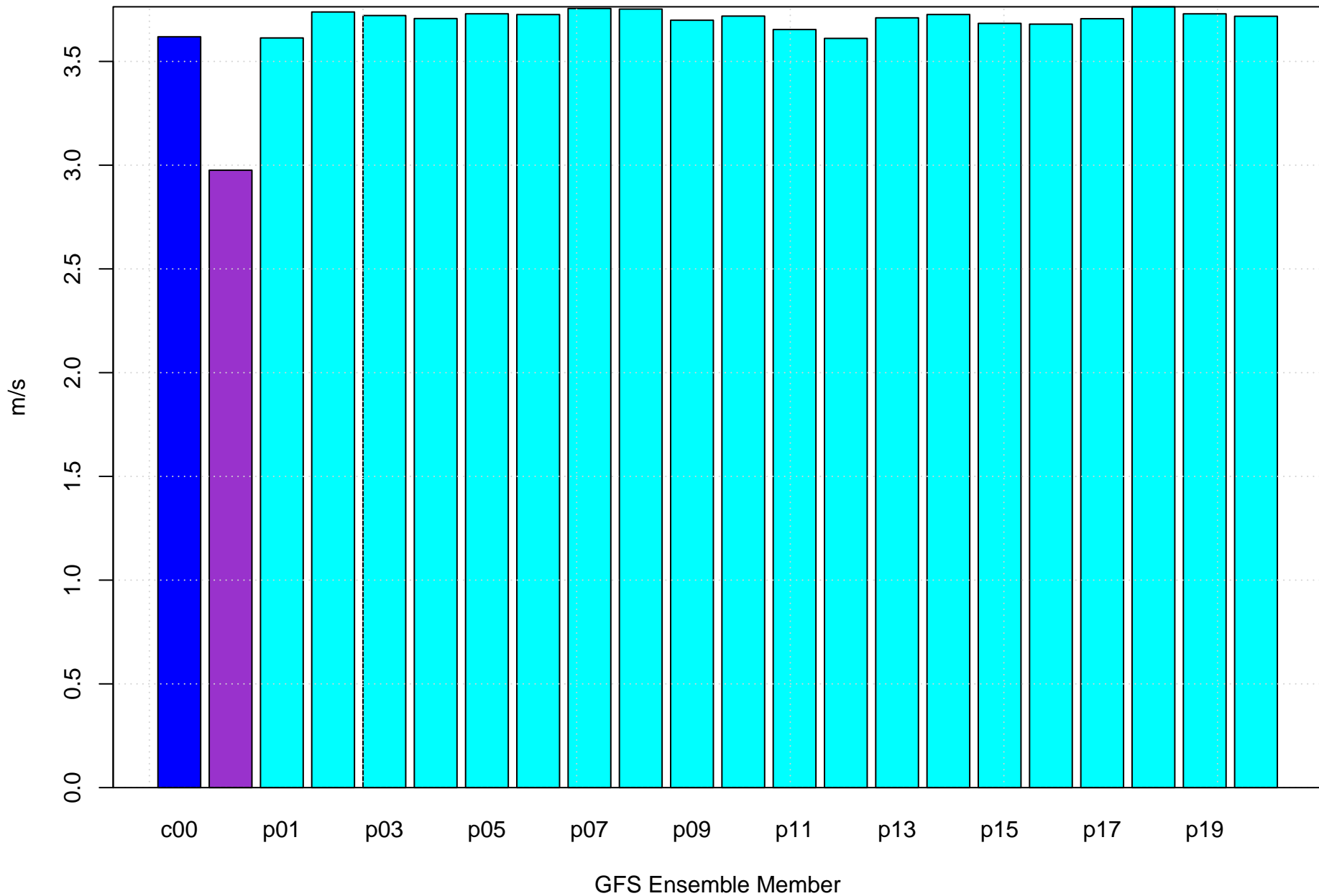
# Surface wind speed bias KMRC



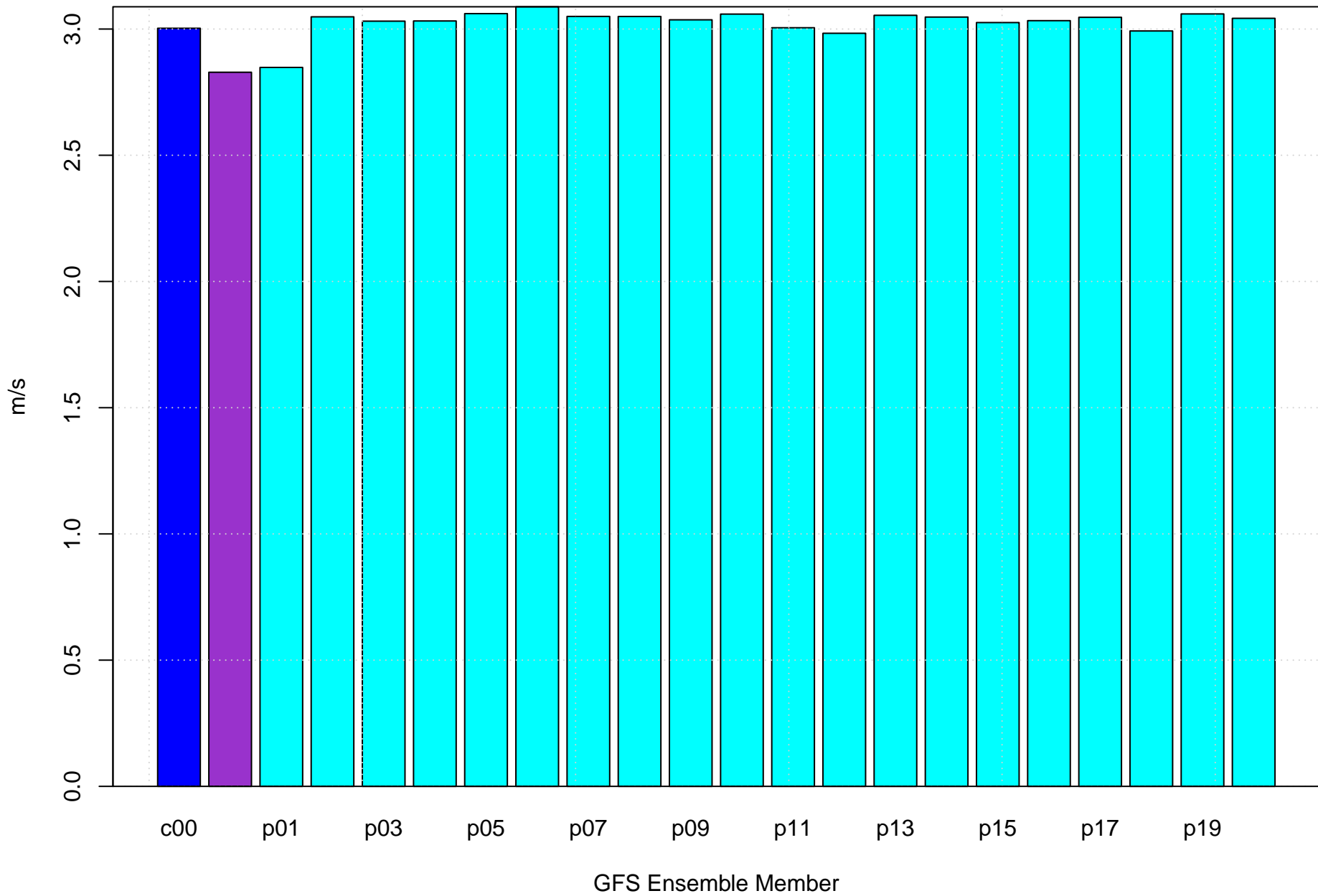
# Surface direction bias KMRC



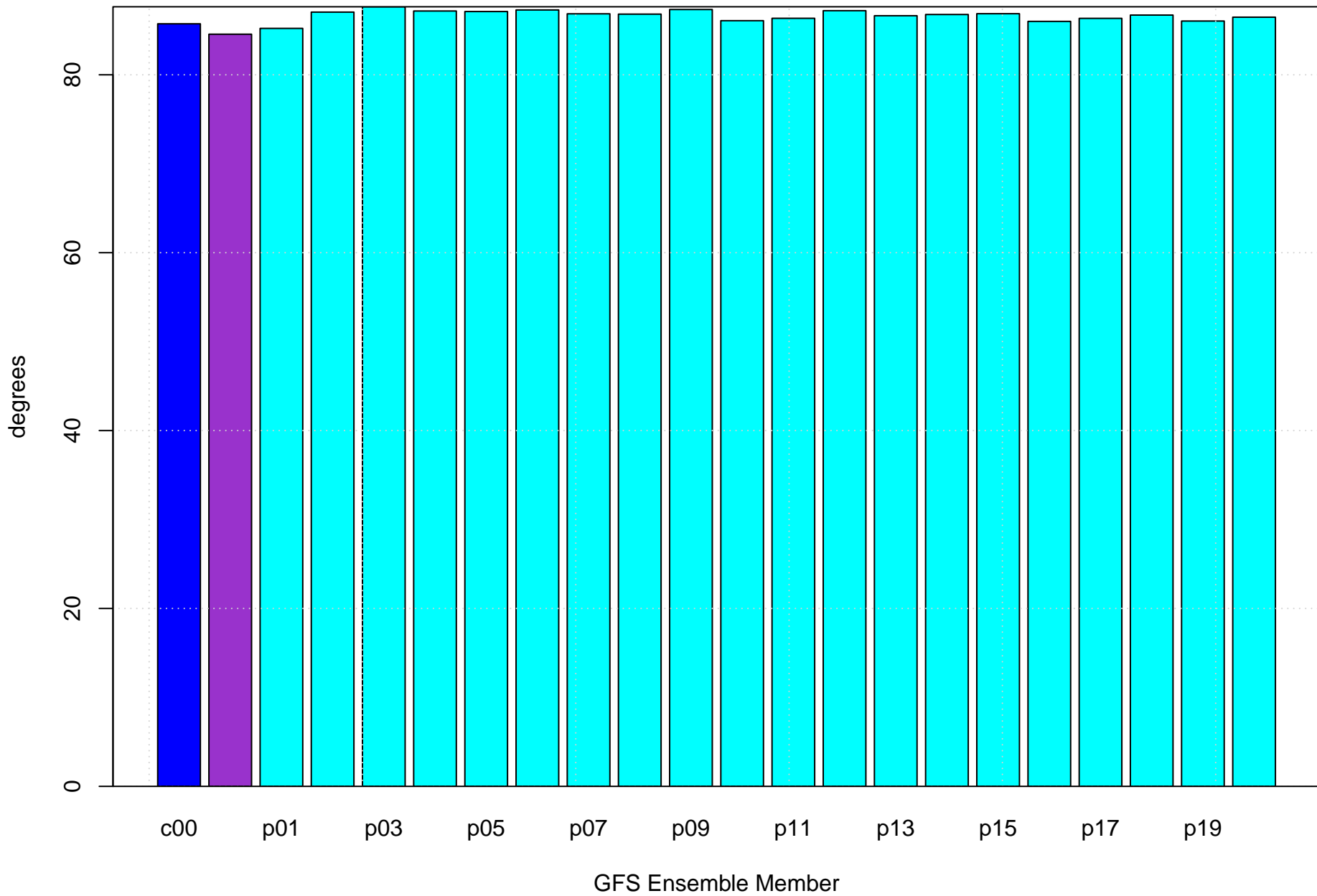
# Surface vector wind vector RMSE KMRC



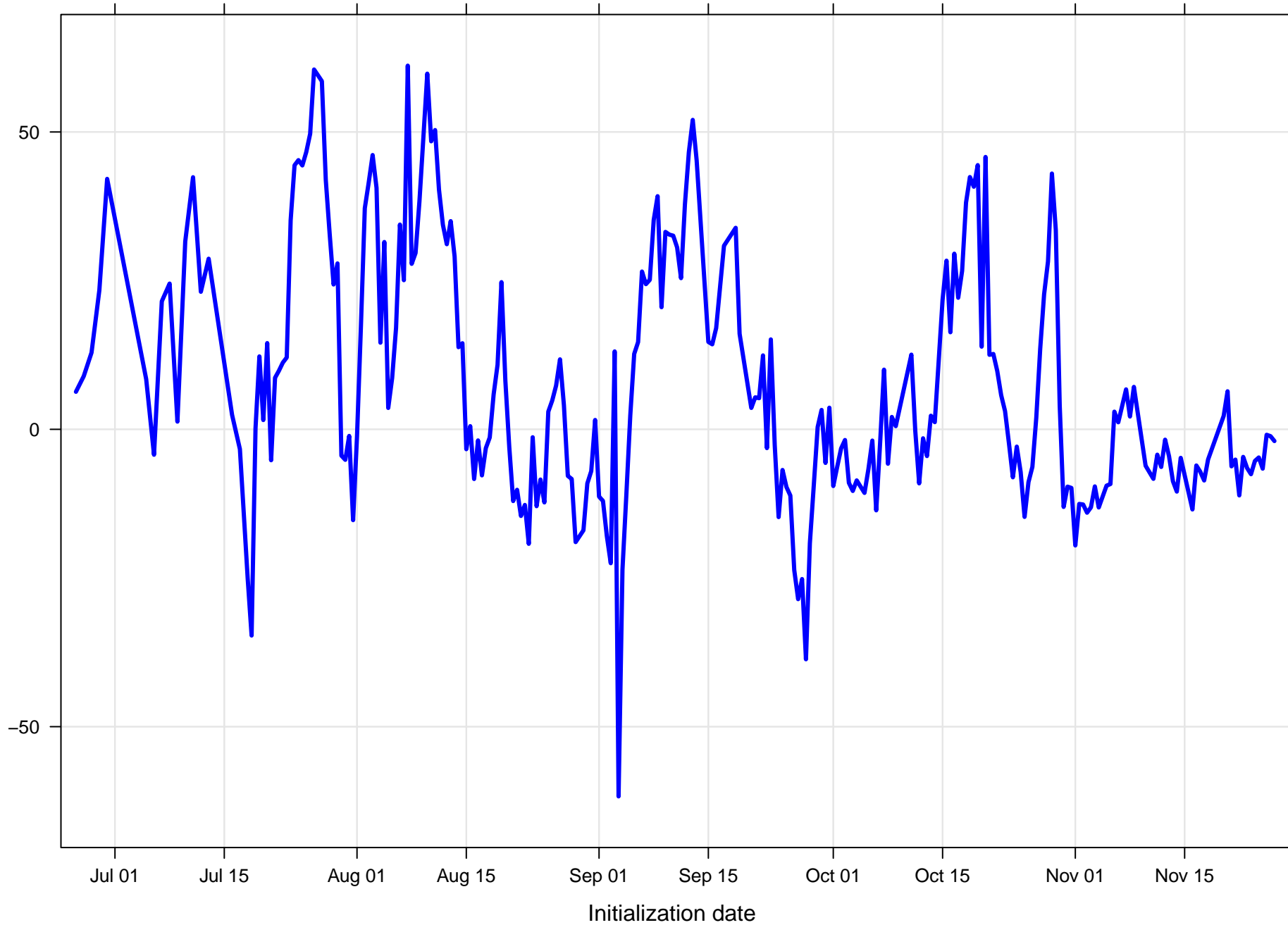
# Surface wind speed RMSE KMRC



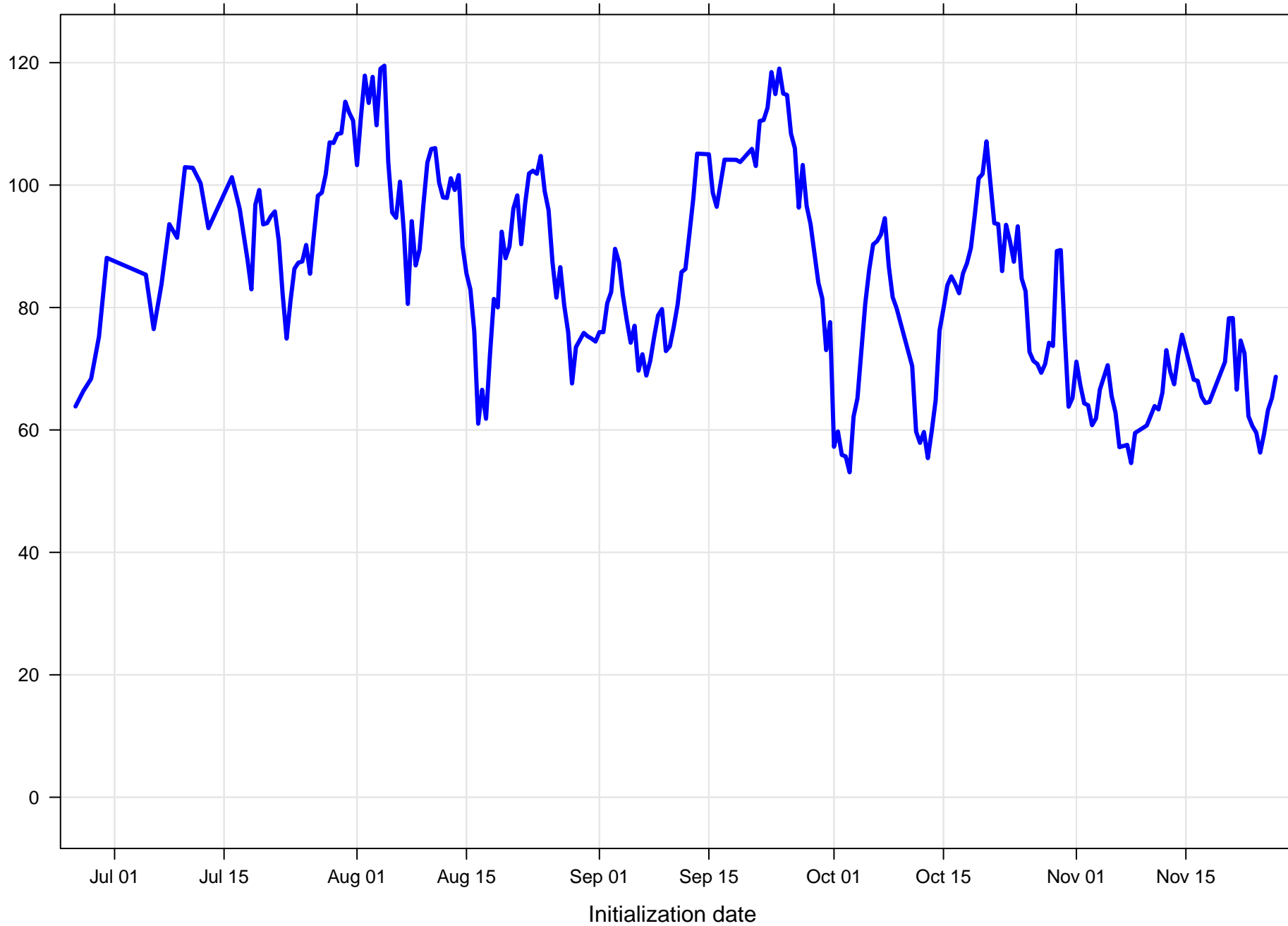
# Surface direction RMSE KMRC



Surface wind direction bias at KMRC all forecast hours and members

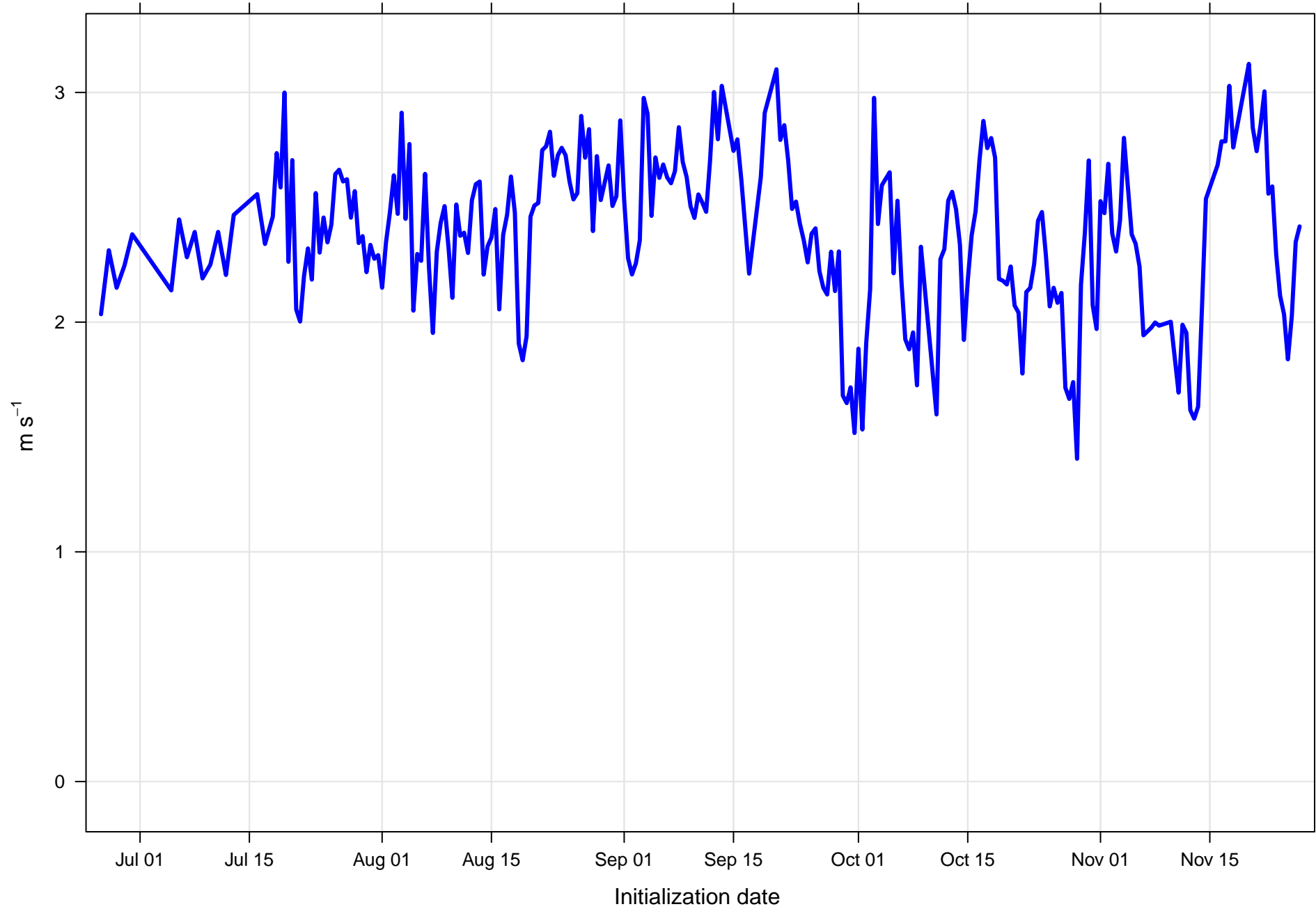


Surface wind direction RMSE at KMRC all forecast hours and members

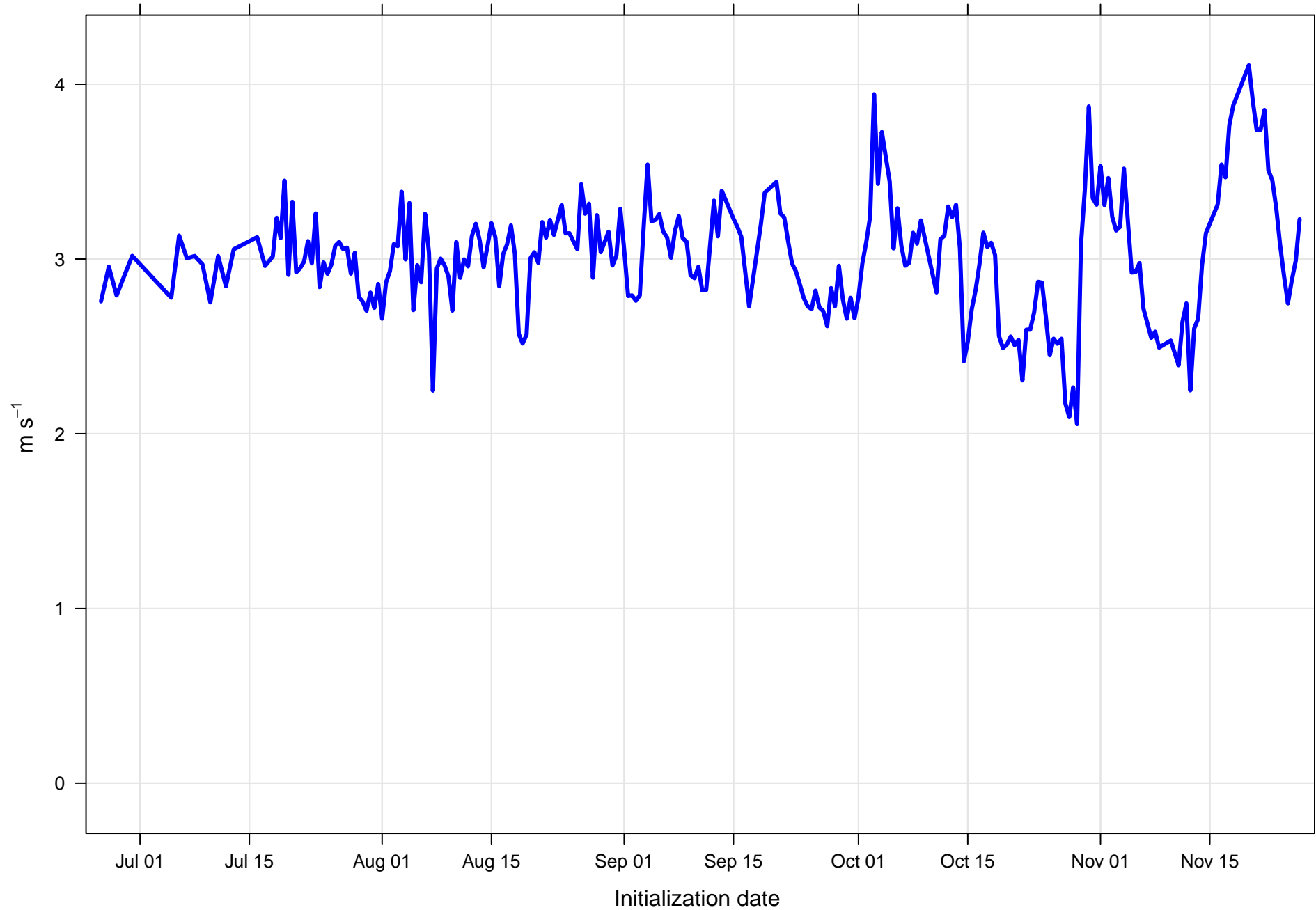




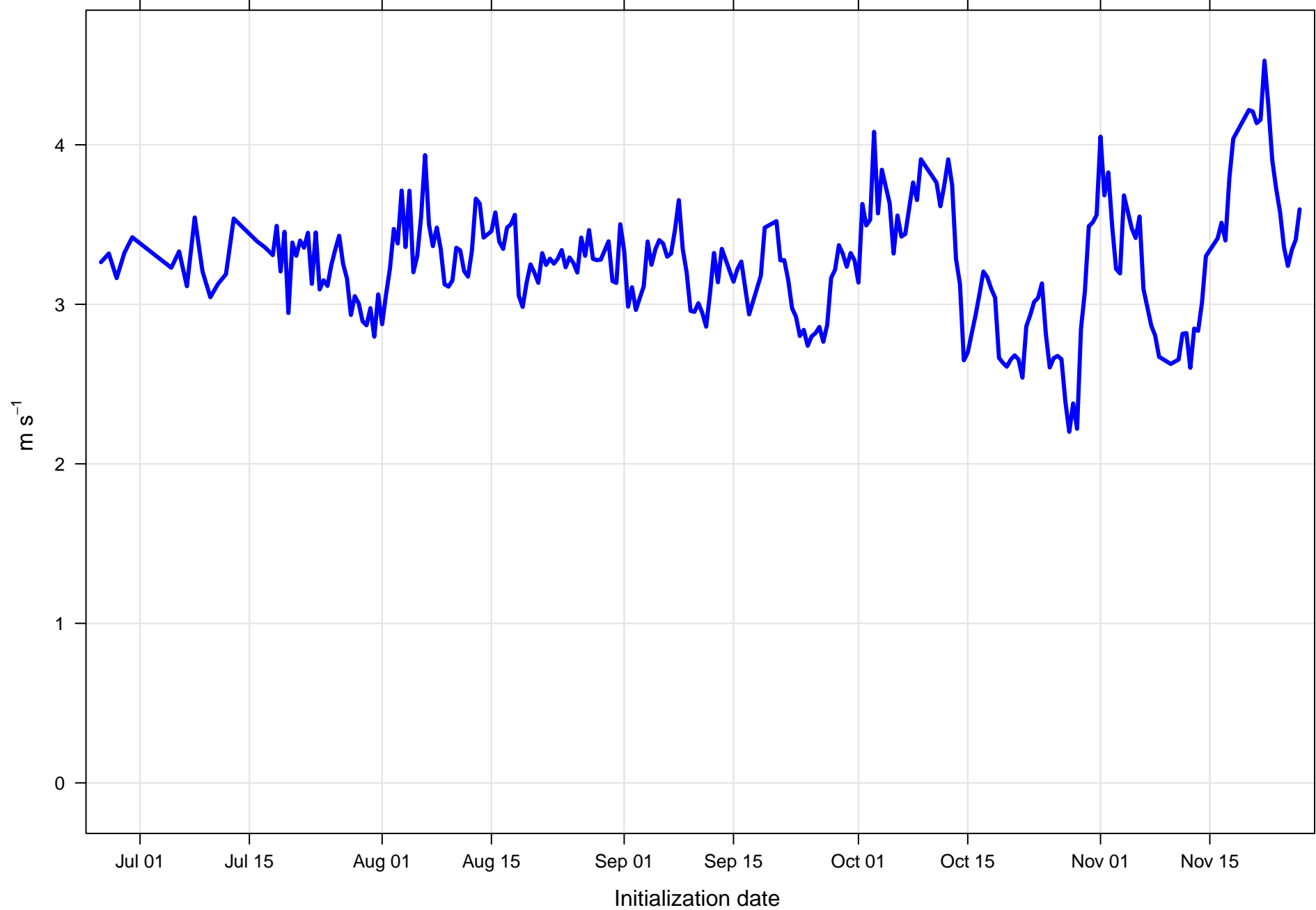
Surface wind speed bias at KMRC all forecast hours and members



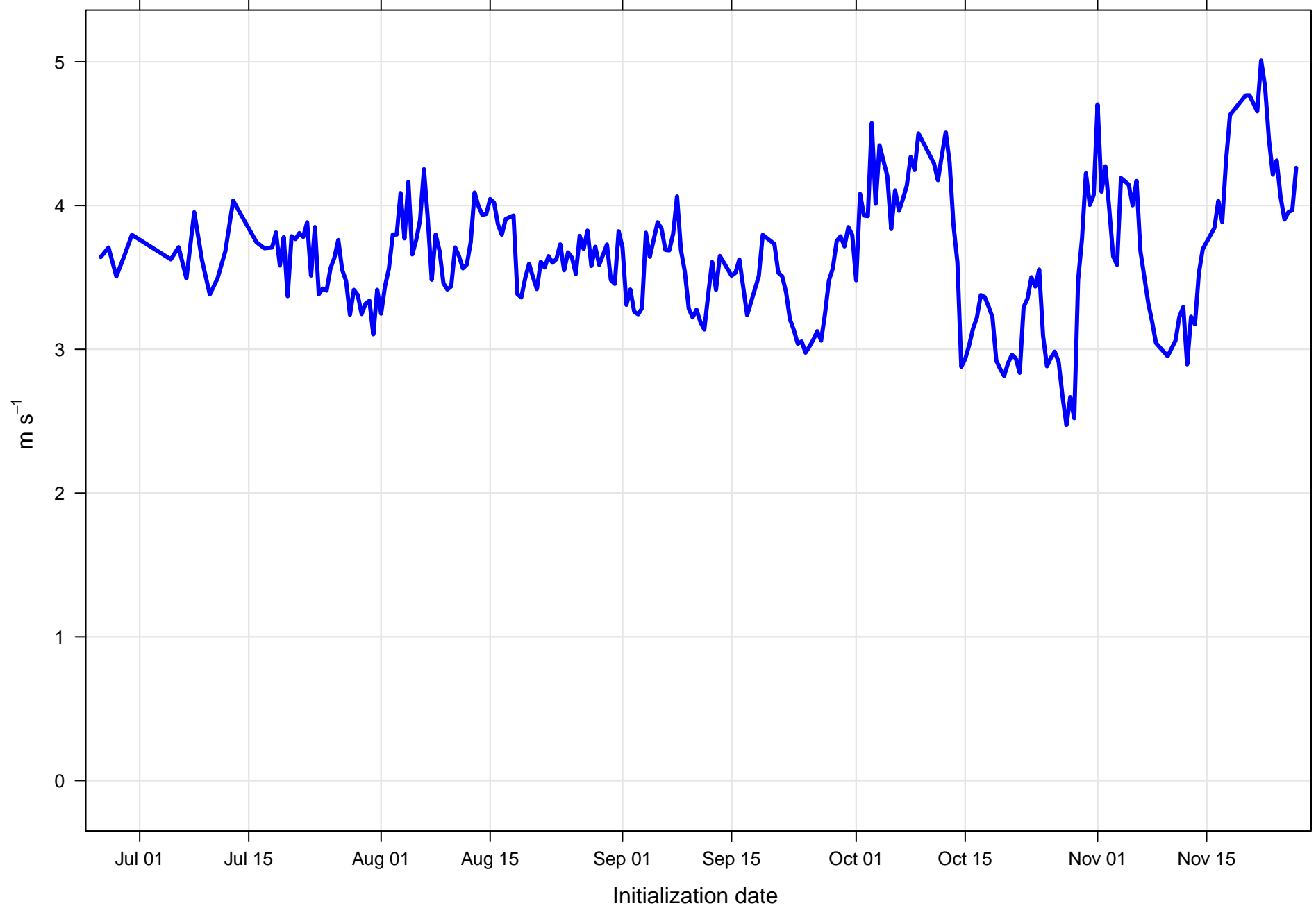
Surface wind speed RMSE at KMRC all forecast hours and members



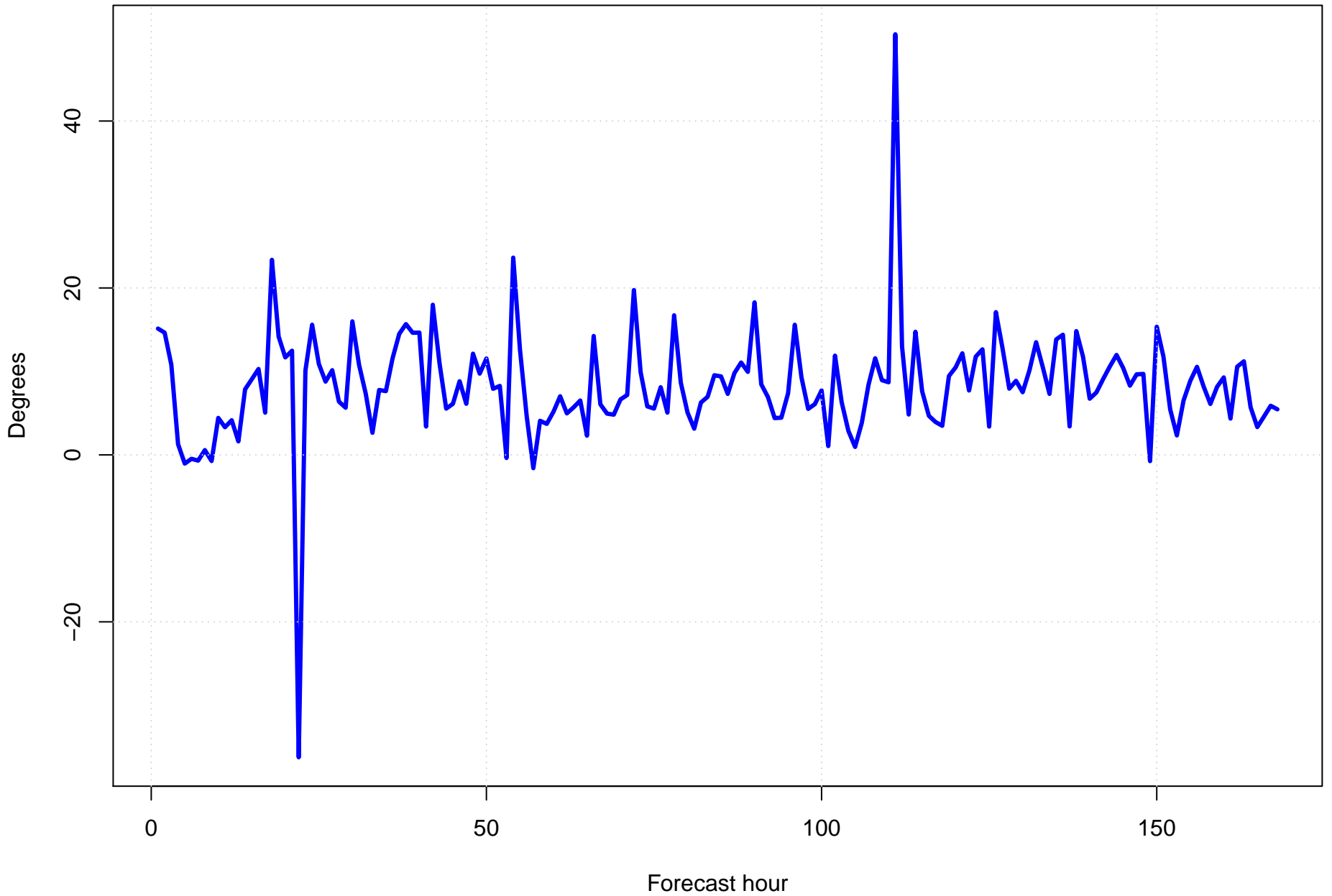
Surface vector wind mean error KMRC all forecast hours and members



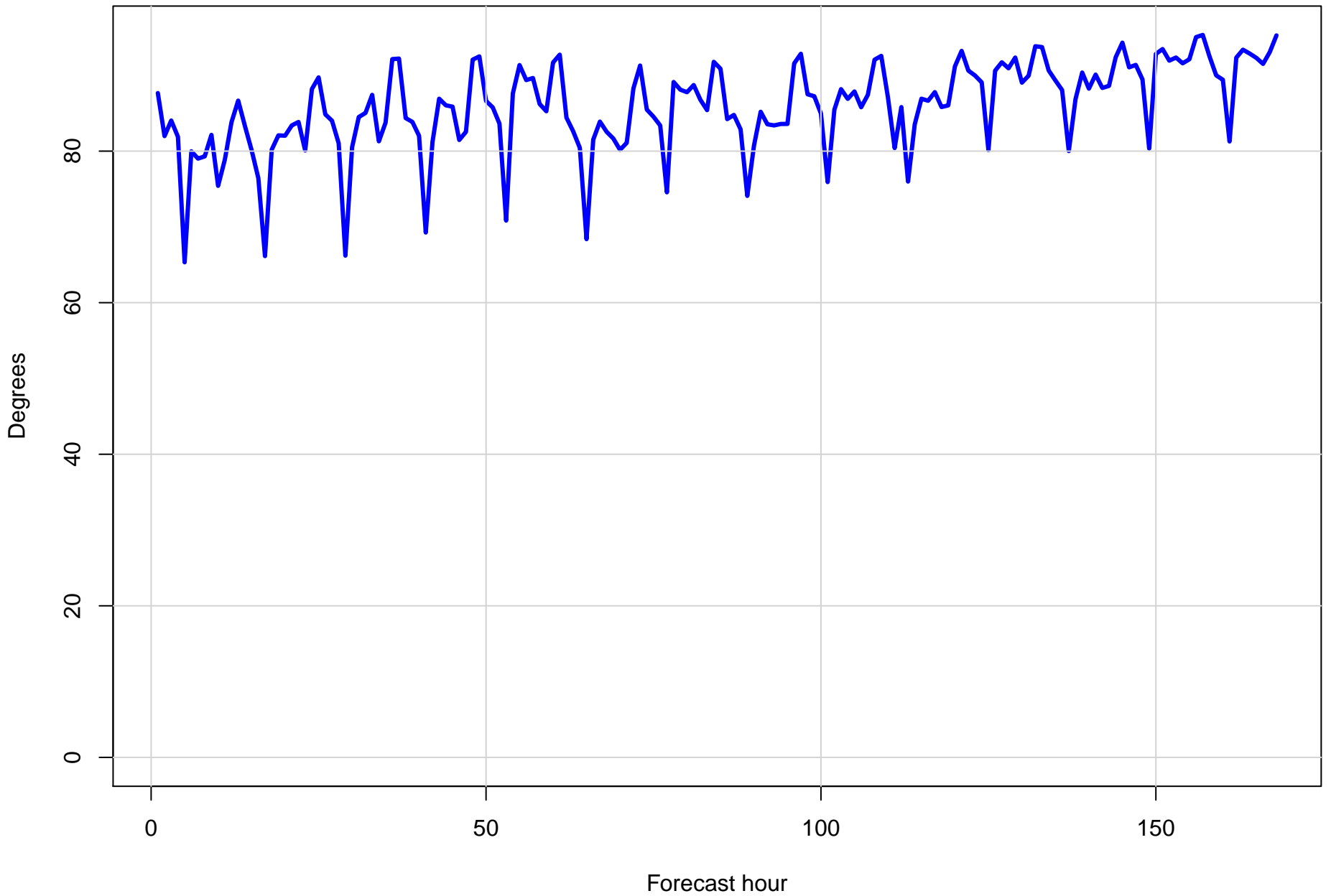
Surface vector wind RMSE at KMRC all forecast hours and members



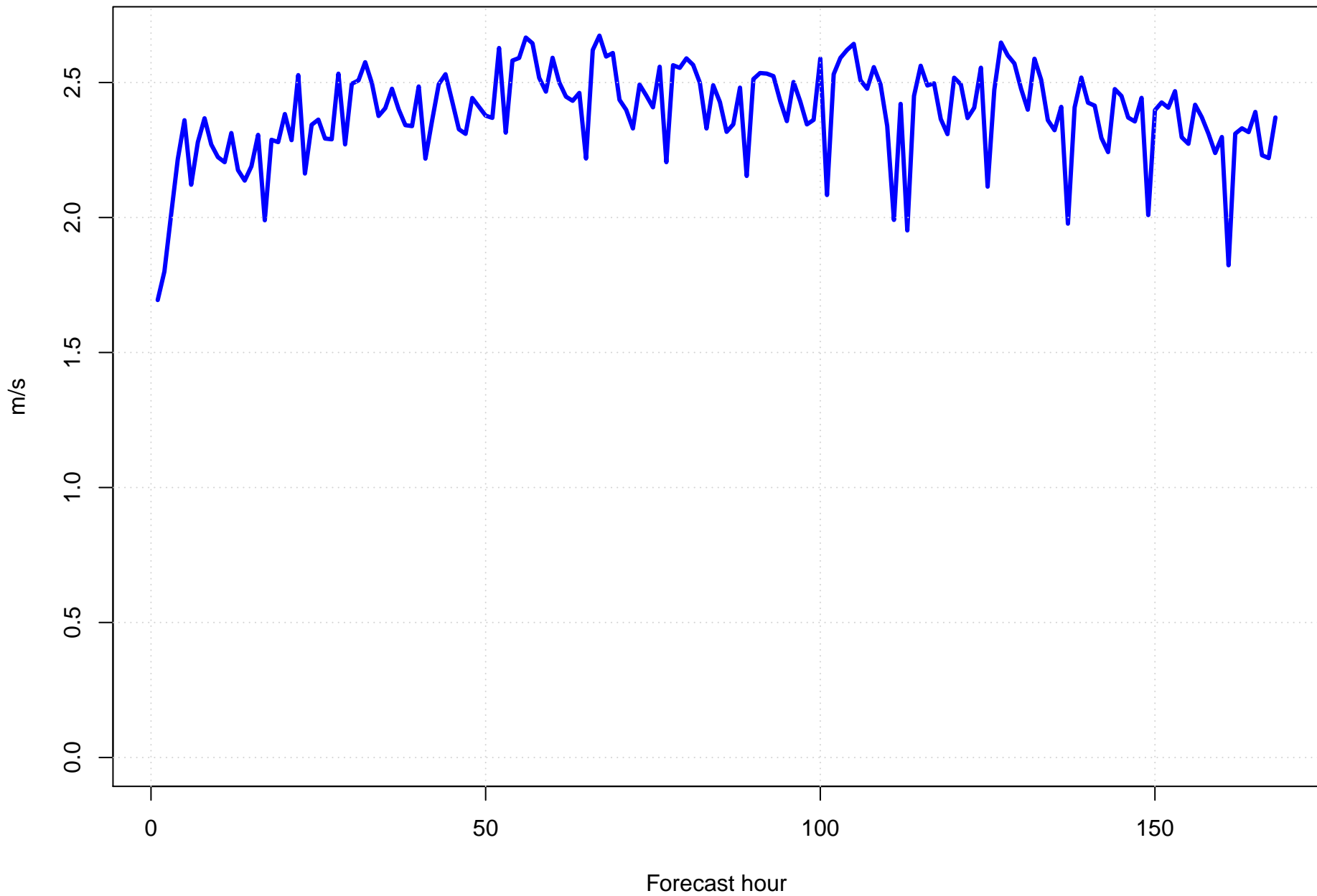
Surface wind direction bias at KMRC by forecast hour



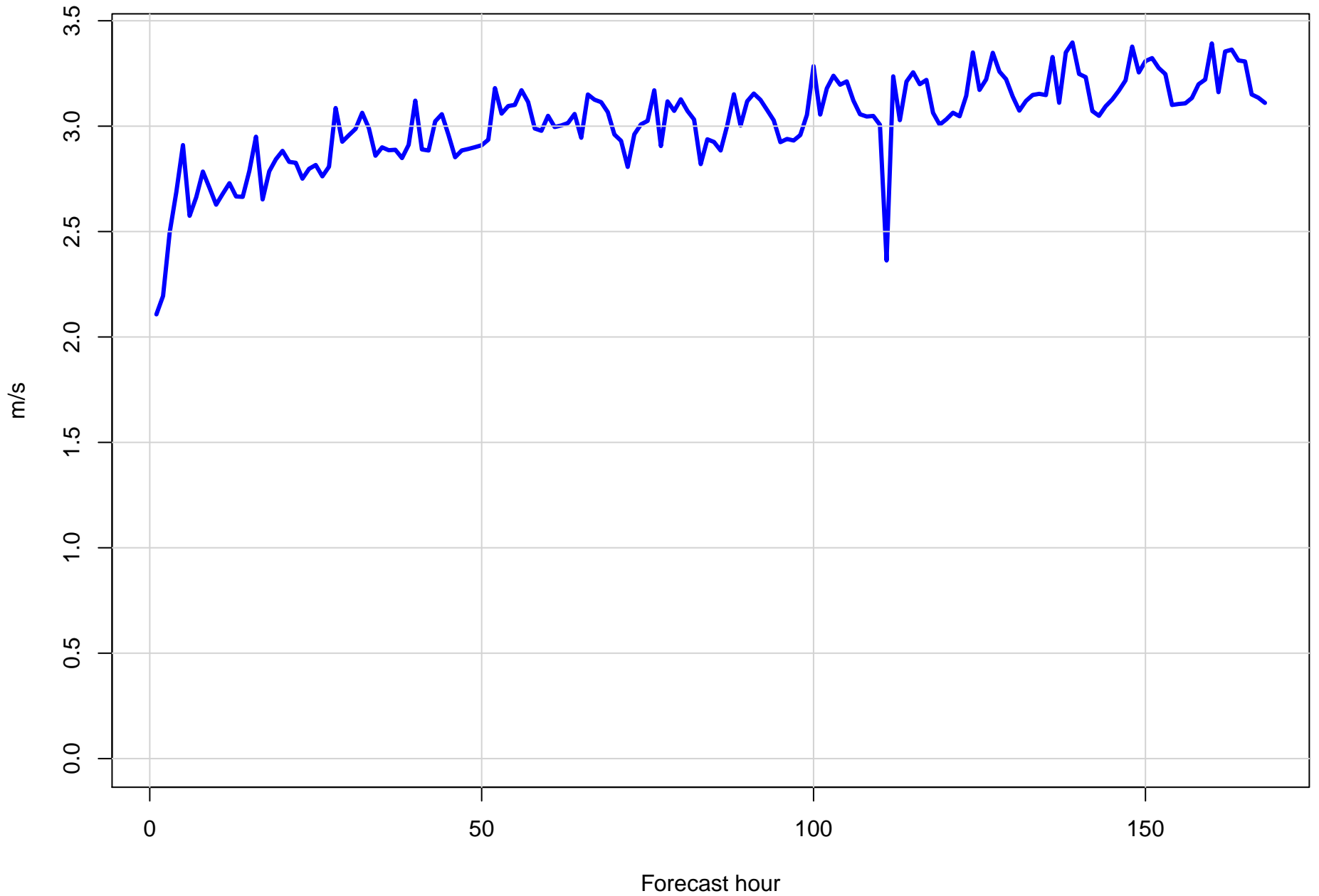
Surface wind direction RMSE at KMRC by forecast hour



Surface wind speed bias at KMRC by forecast hour

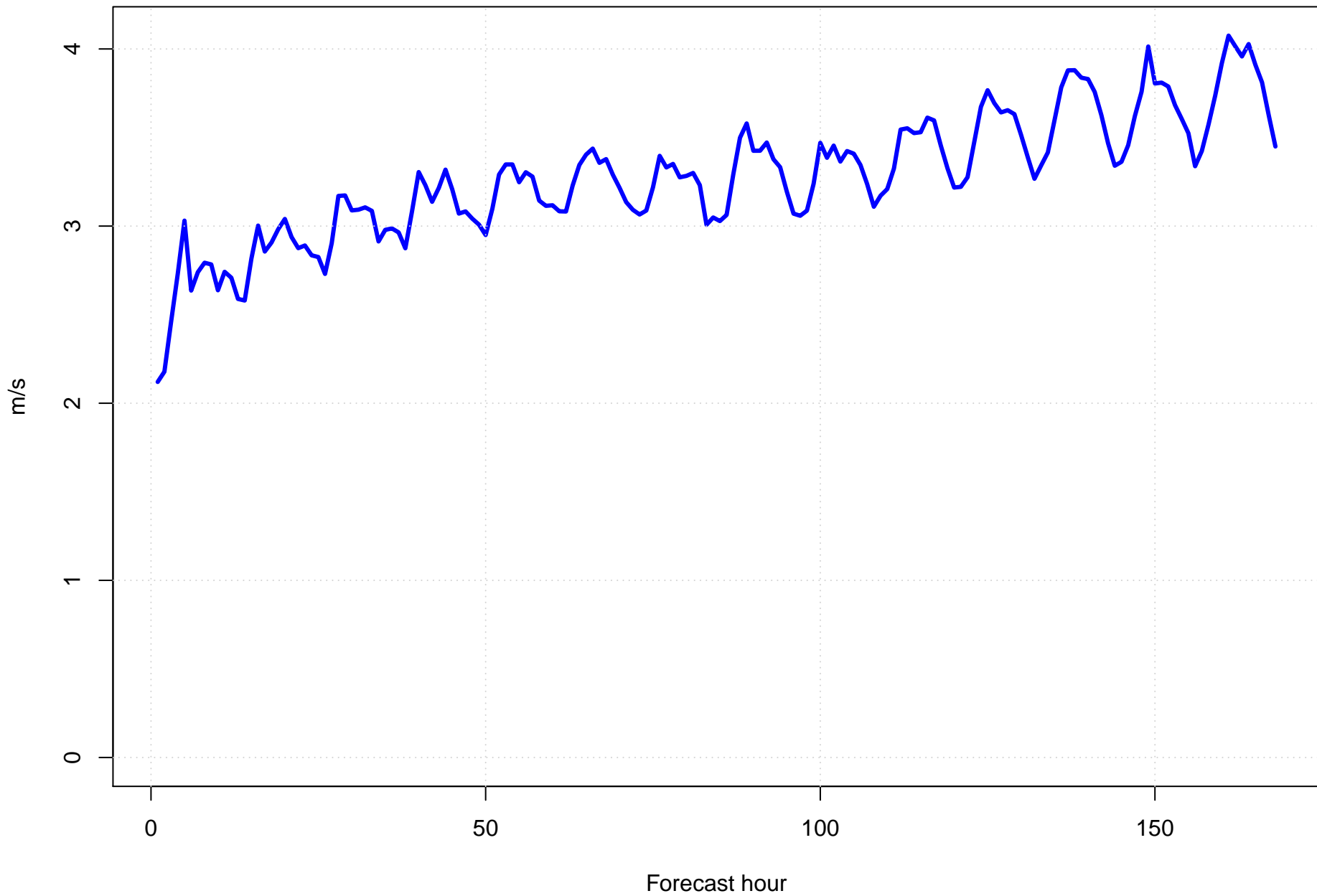


Surface wind speed RMSE at KMRC by forecast hour

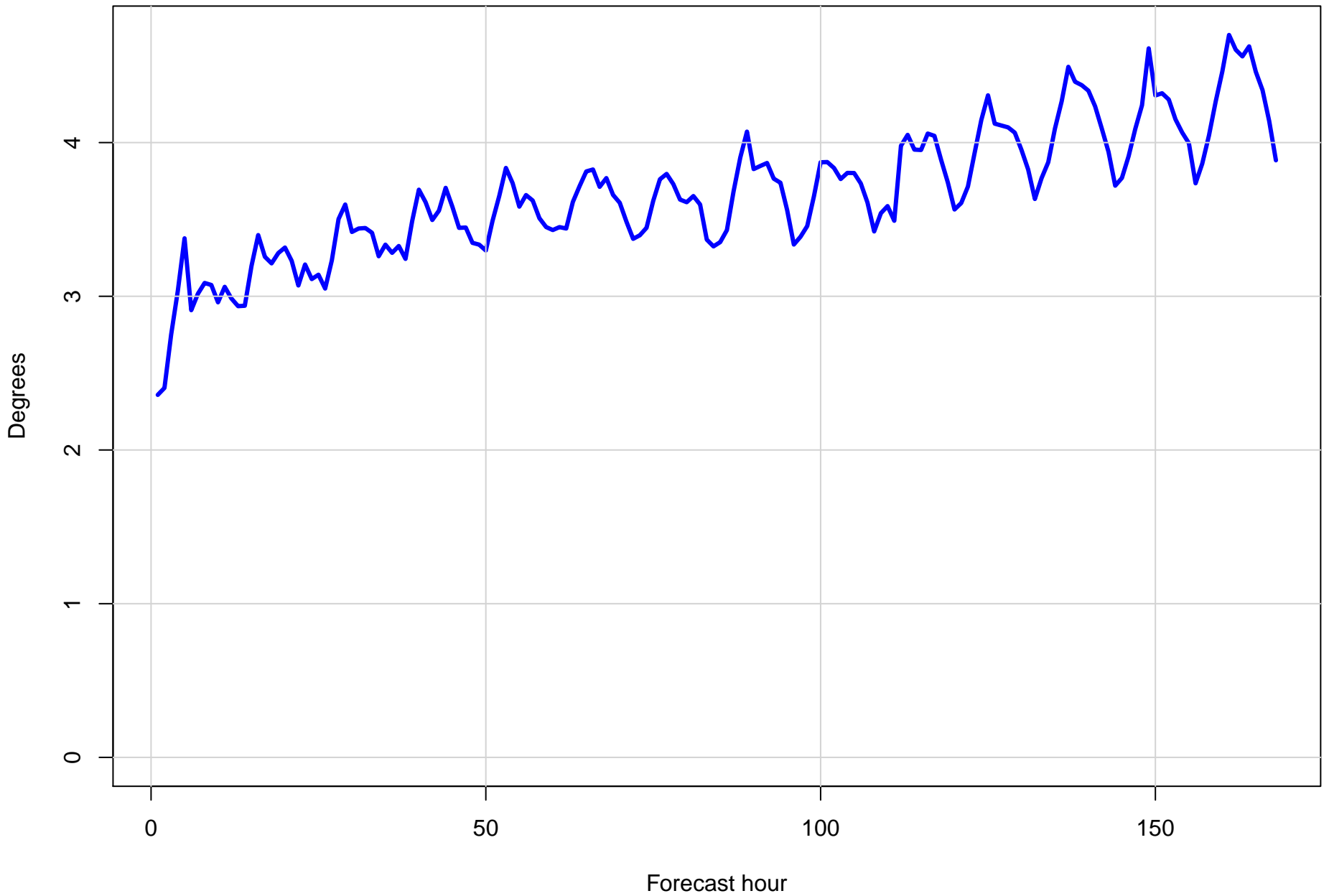




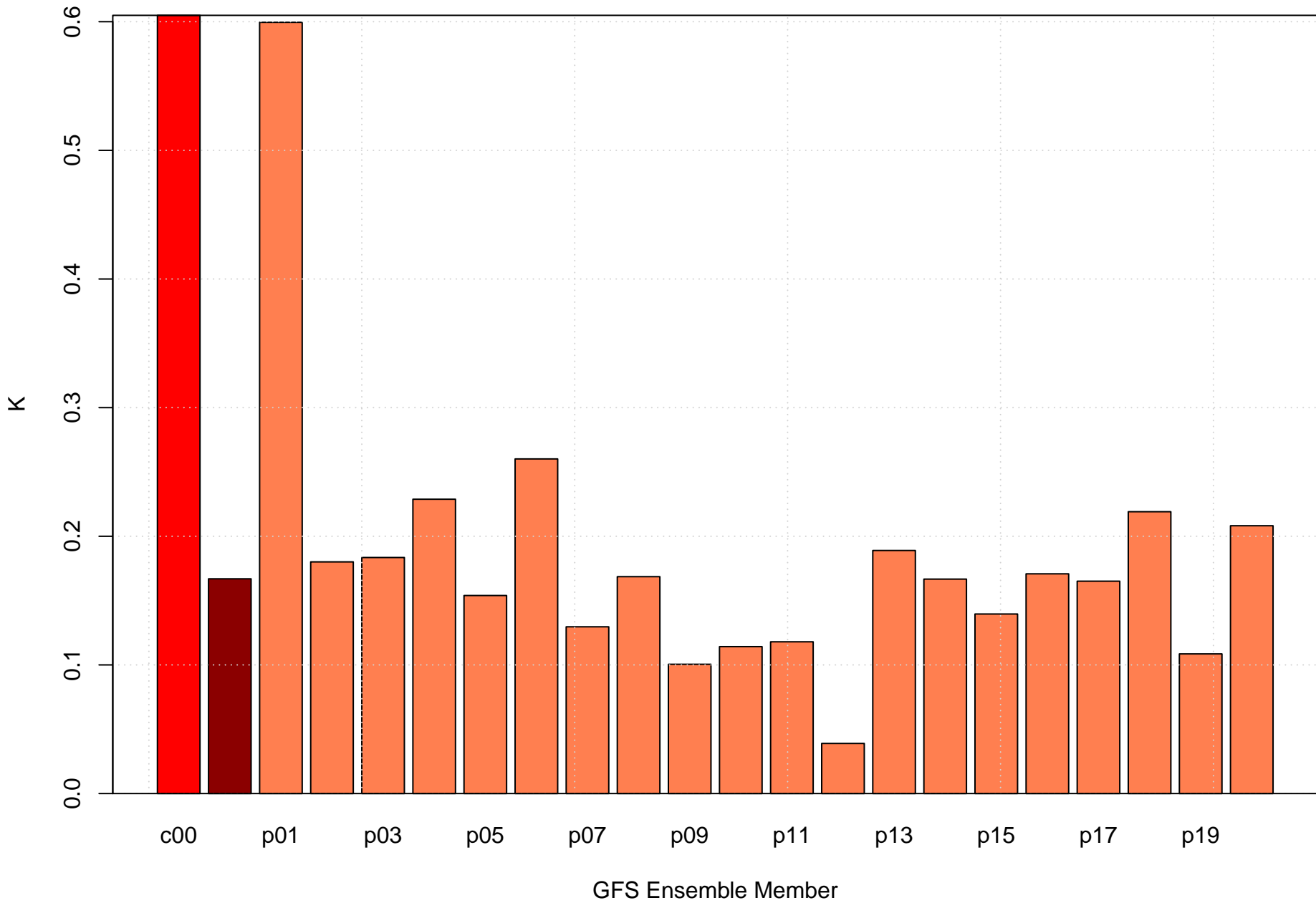
Surface vector wind error at KMRC by forecast hour



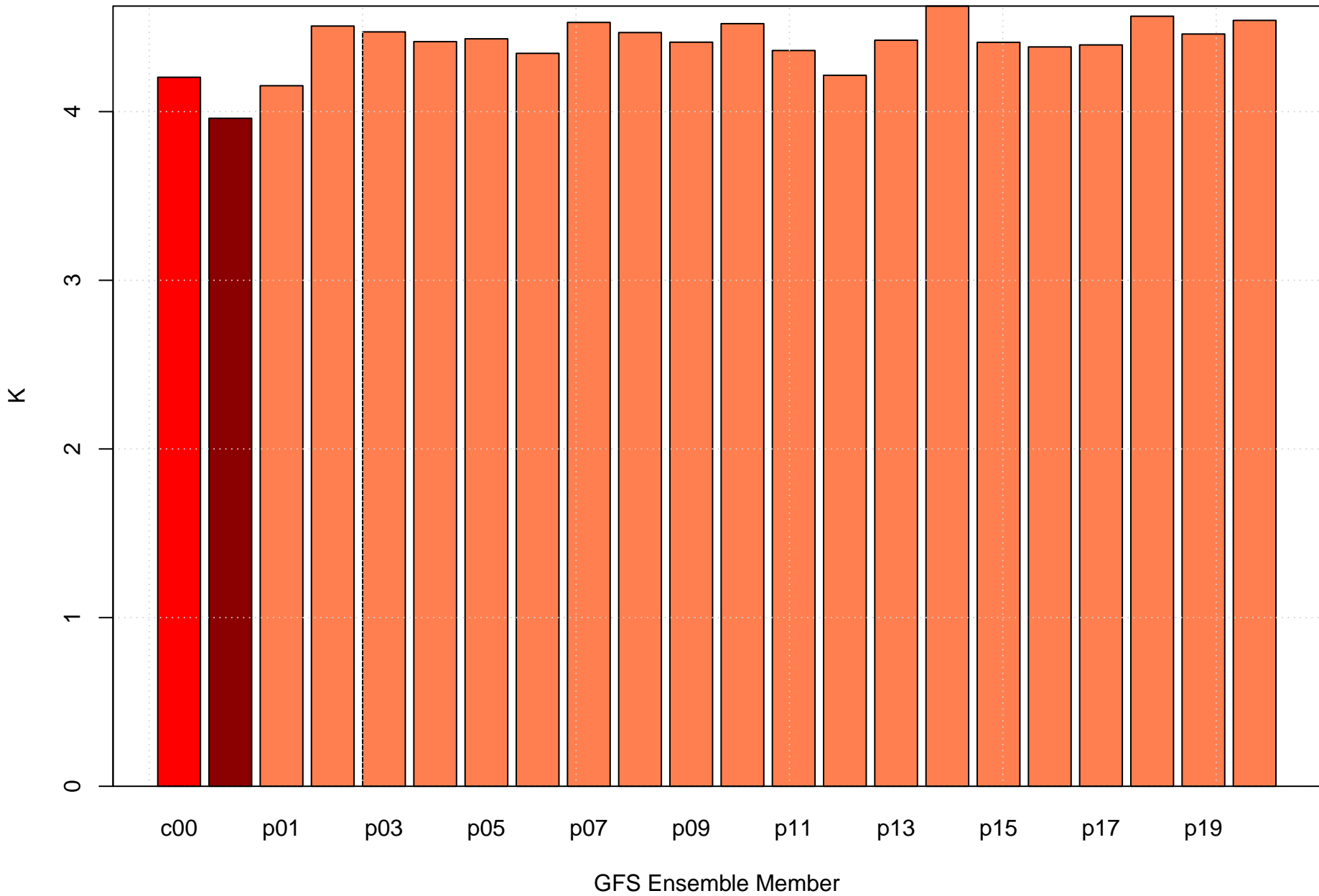
Surface vector wind RMSE at KMRC by forecast hour



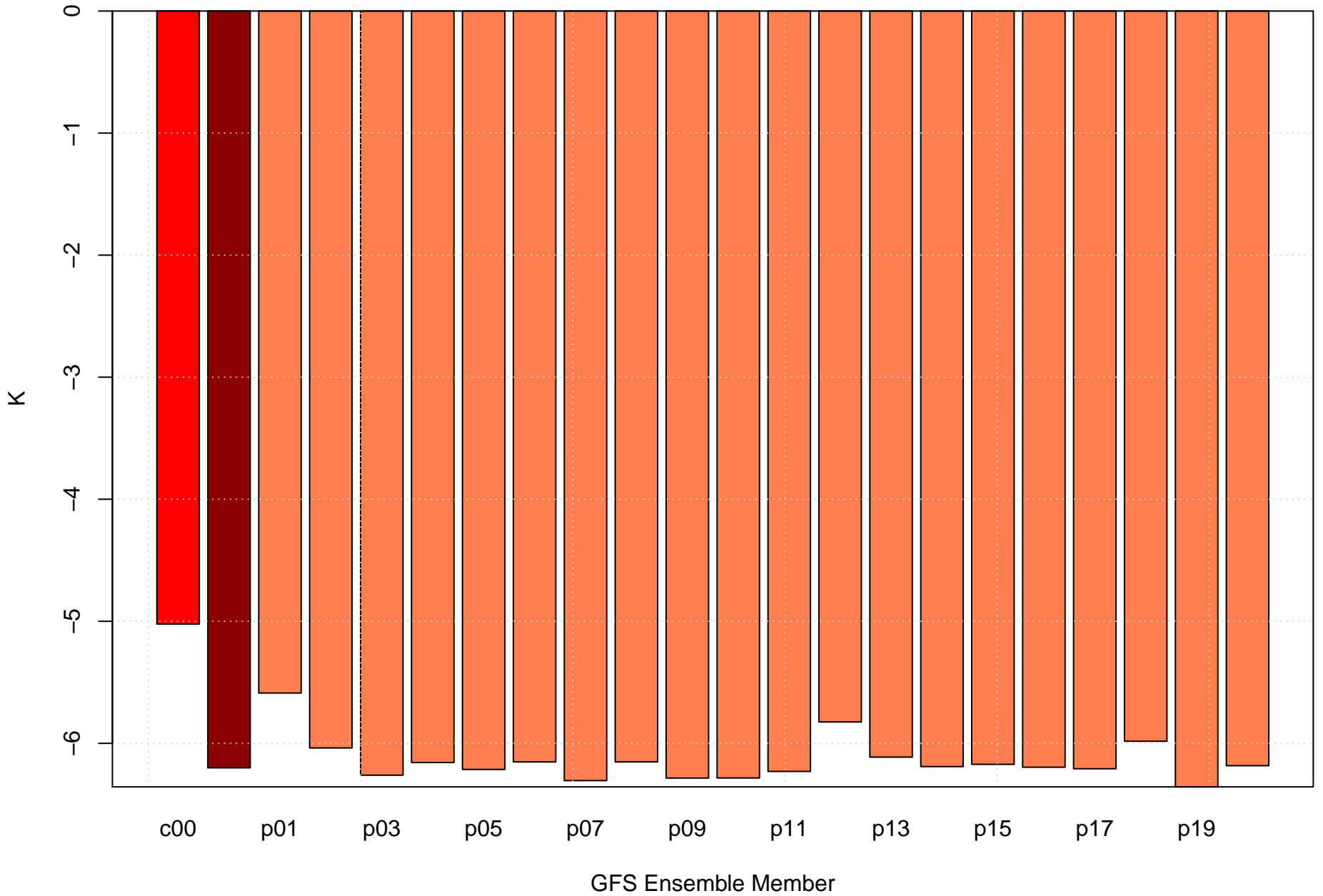
# Surface temperature bias at KMRC



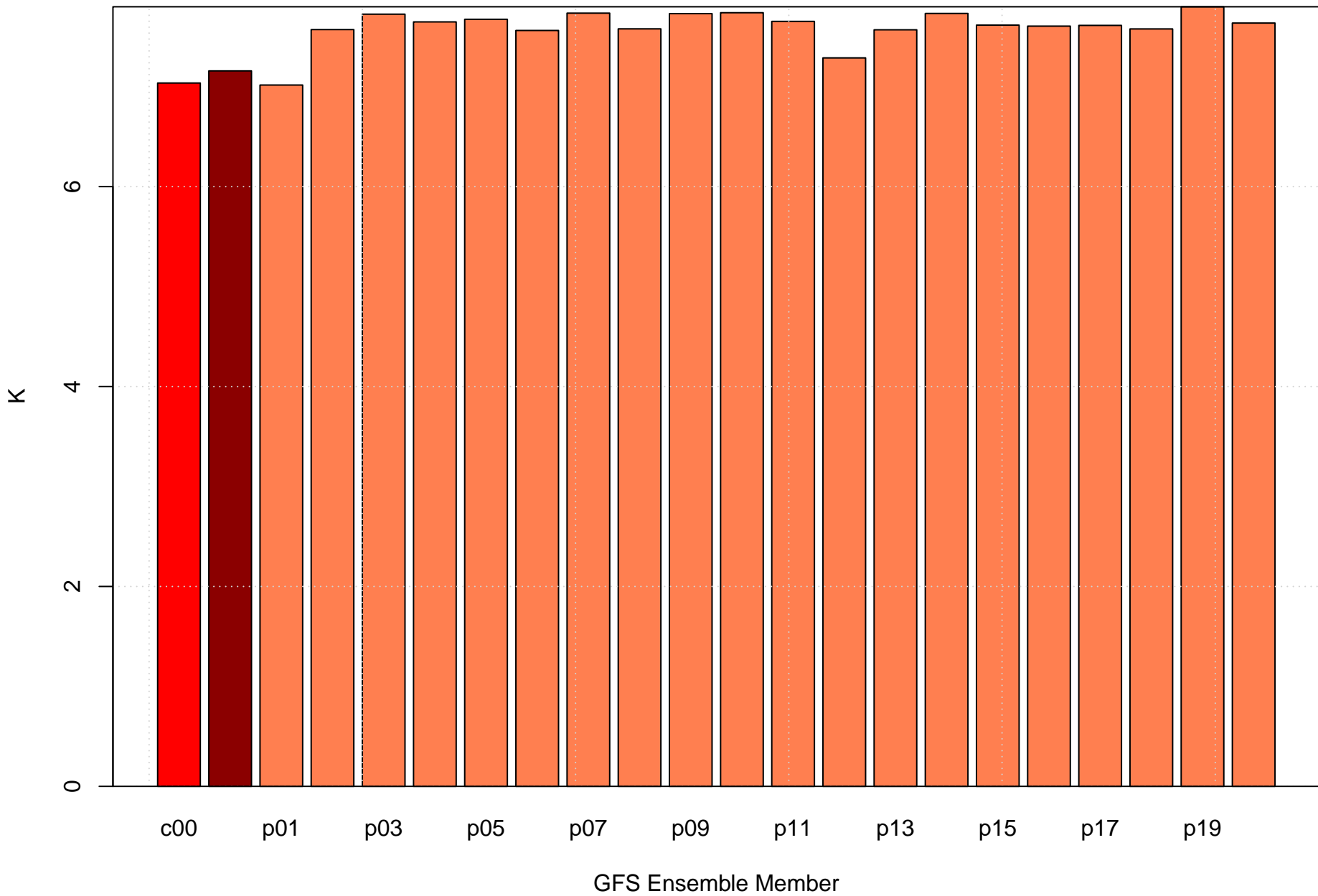
# Surface temperature RMSE at KMRC



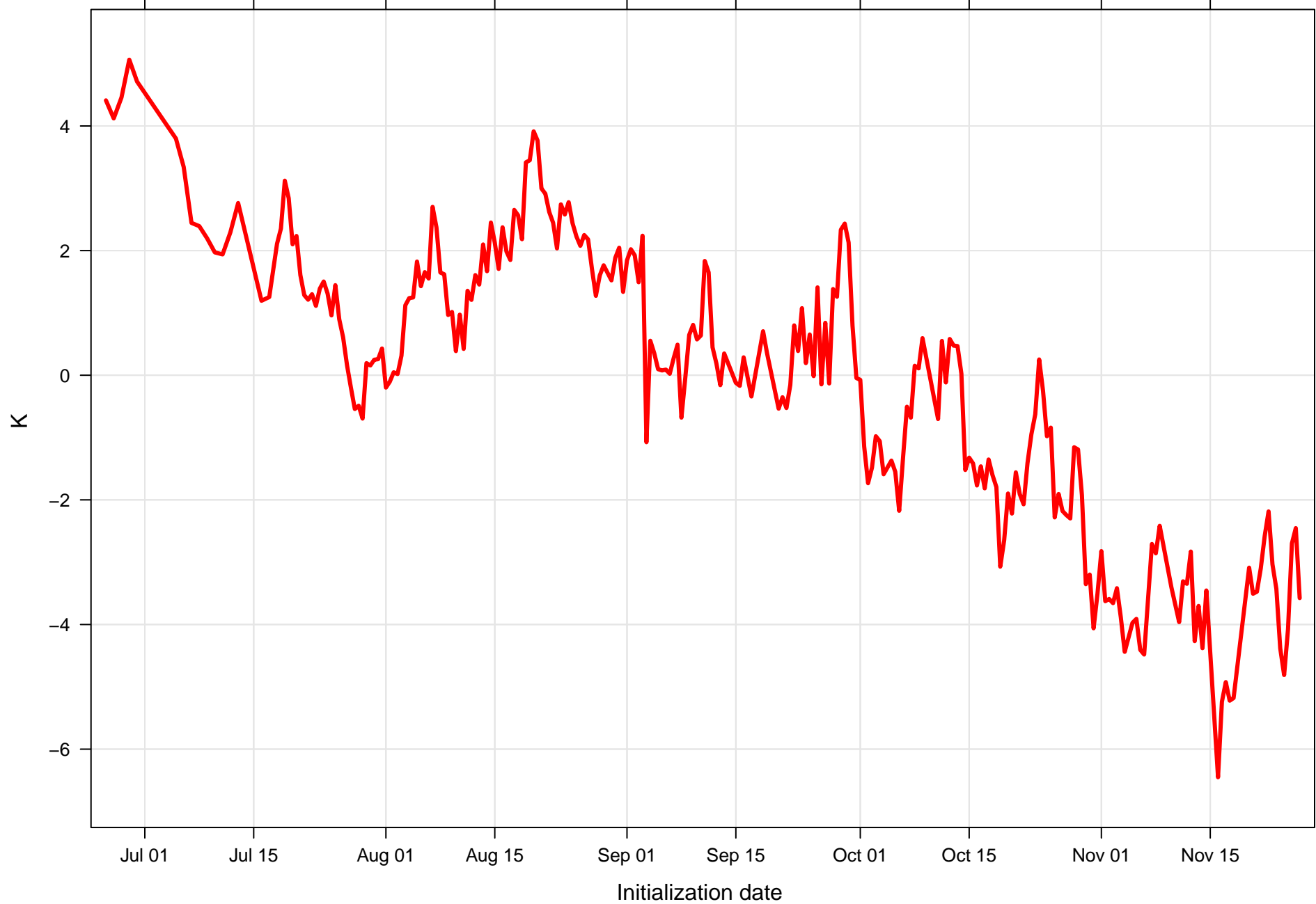
# Surface dew point bias at KMRC



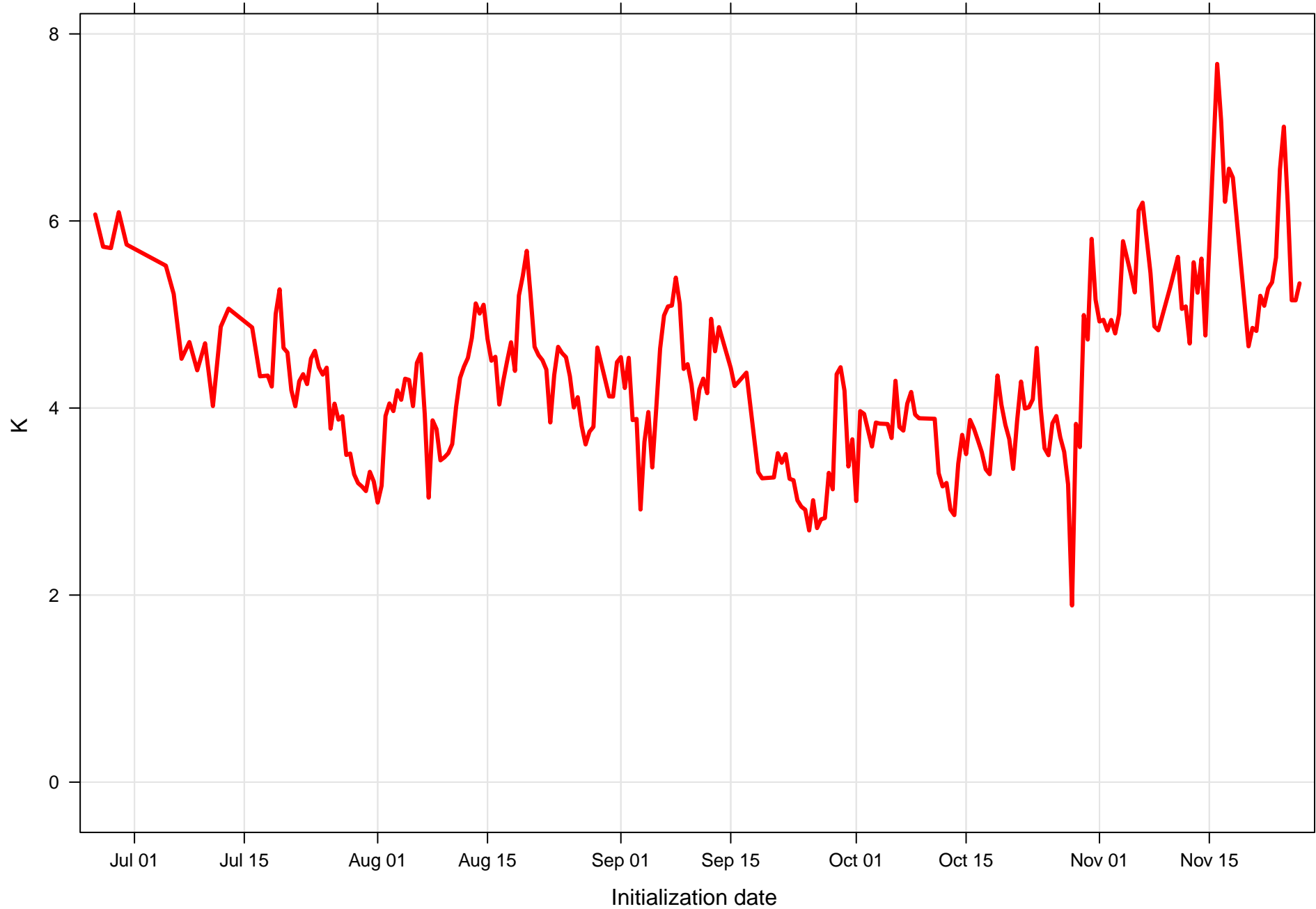
# Surface dew point RMSE at KMRC



Surface temperature bias at KMRC all forecast hours and members

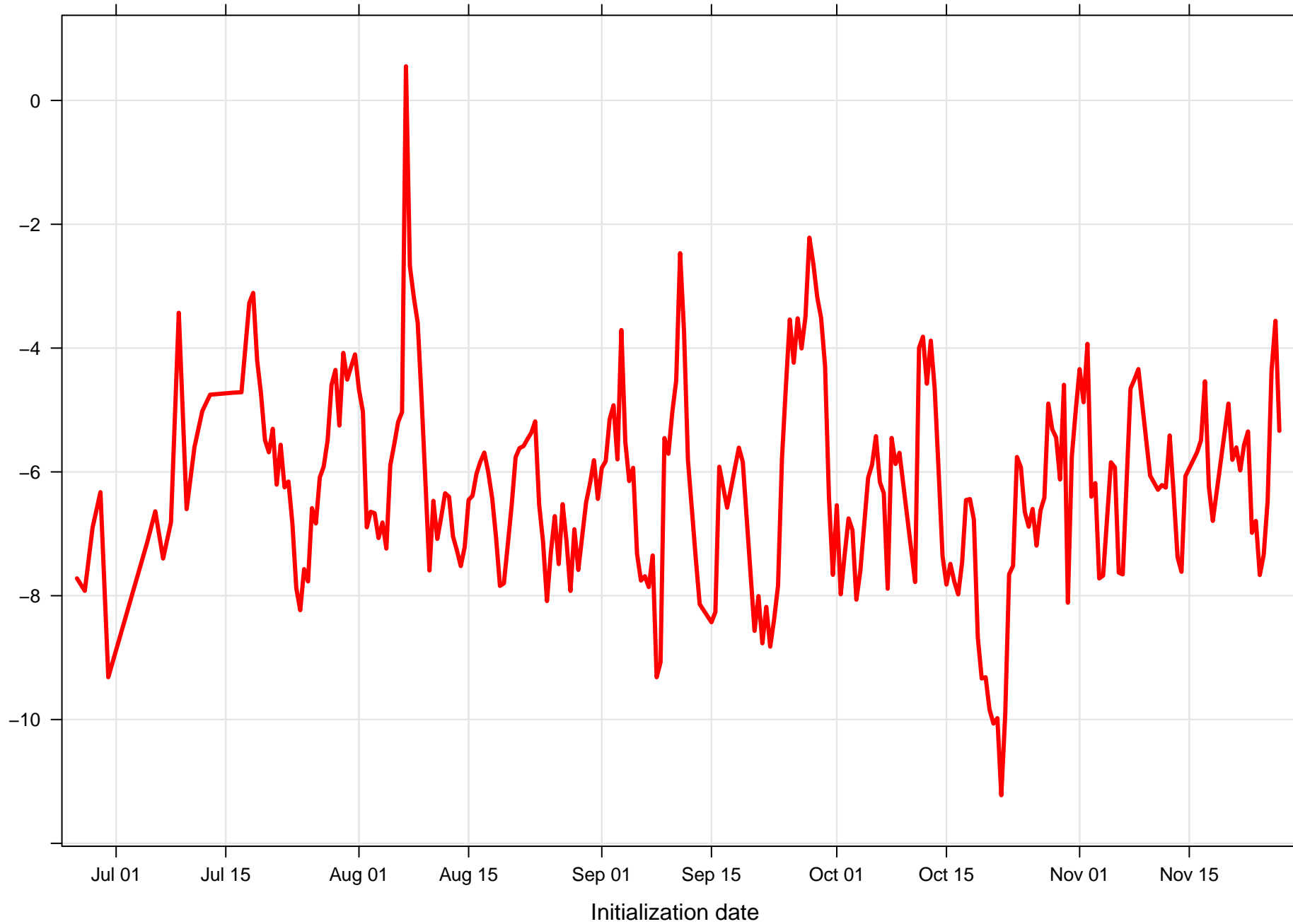


Surface temperature RMSE at KMRC all forecast hours and members

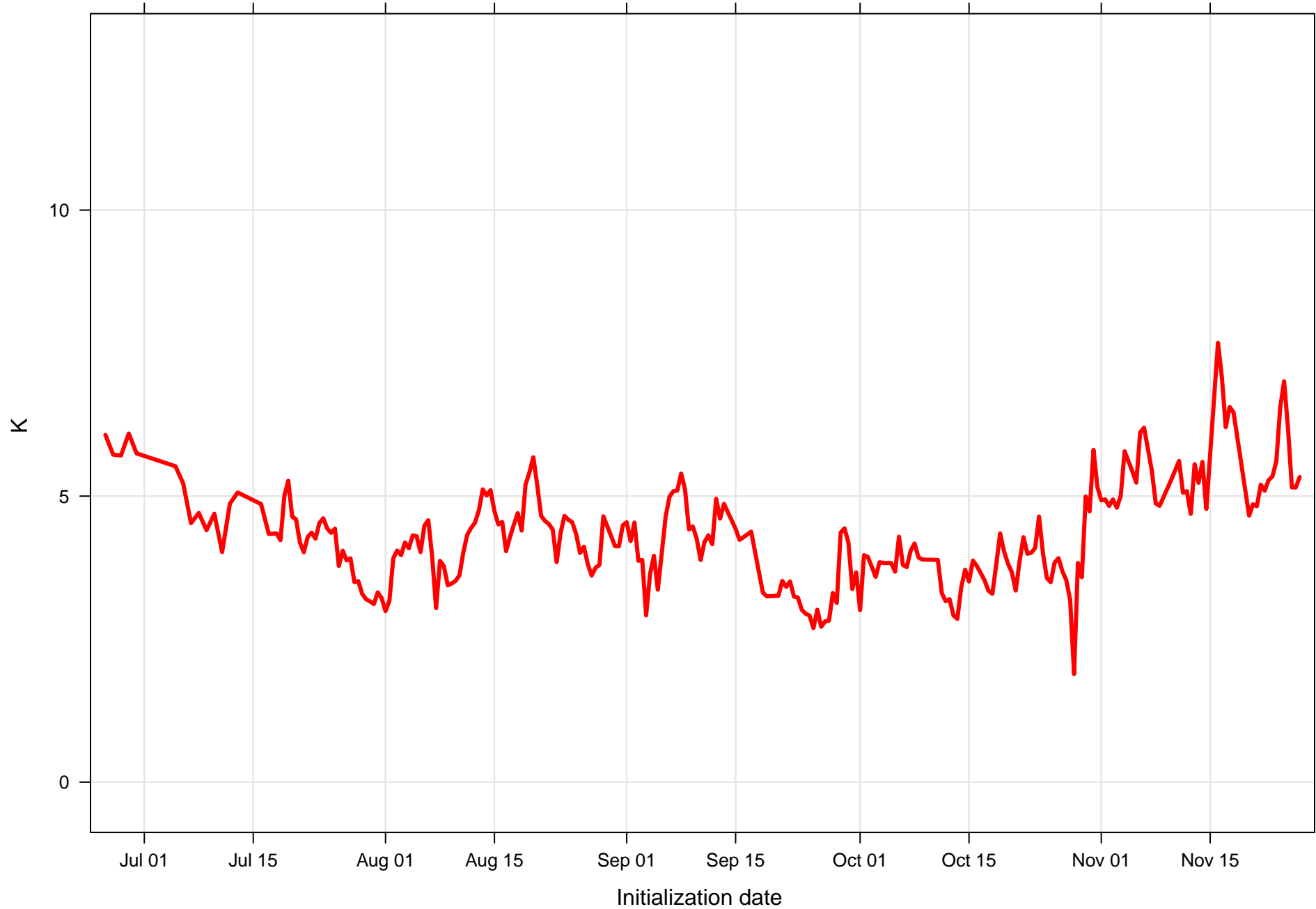




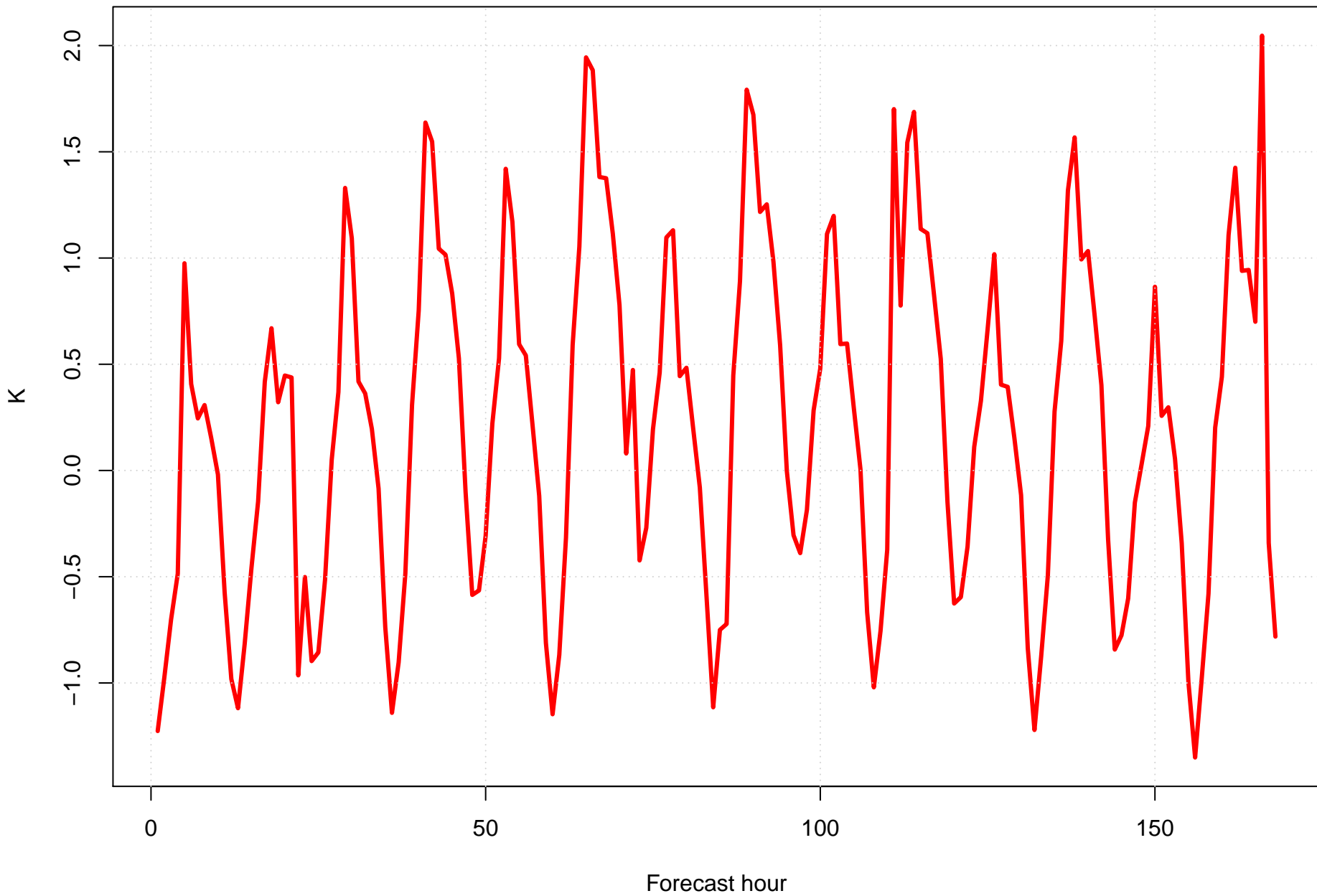
Surface dew point bias at KMRC all forecast hours and members



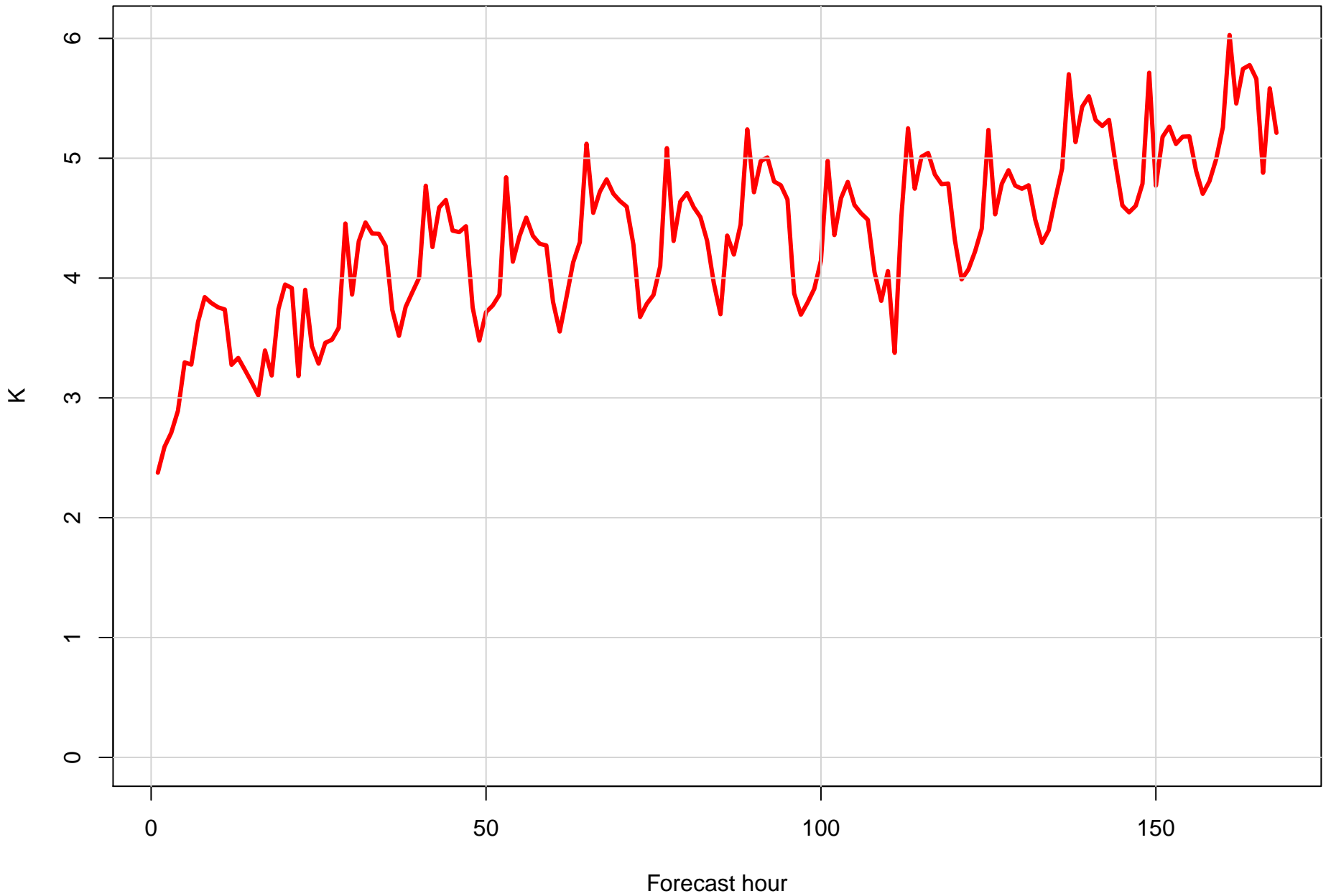
Surface dew point RMSE at KMRC all forecast hours and members



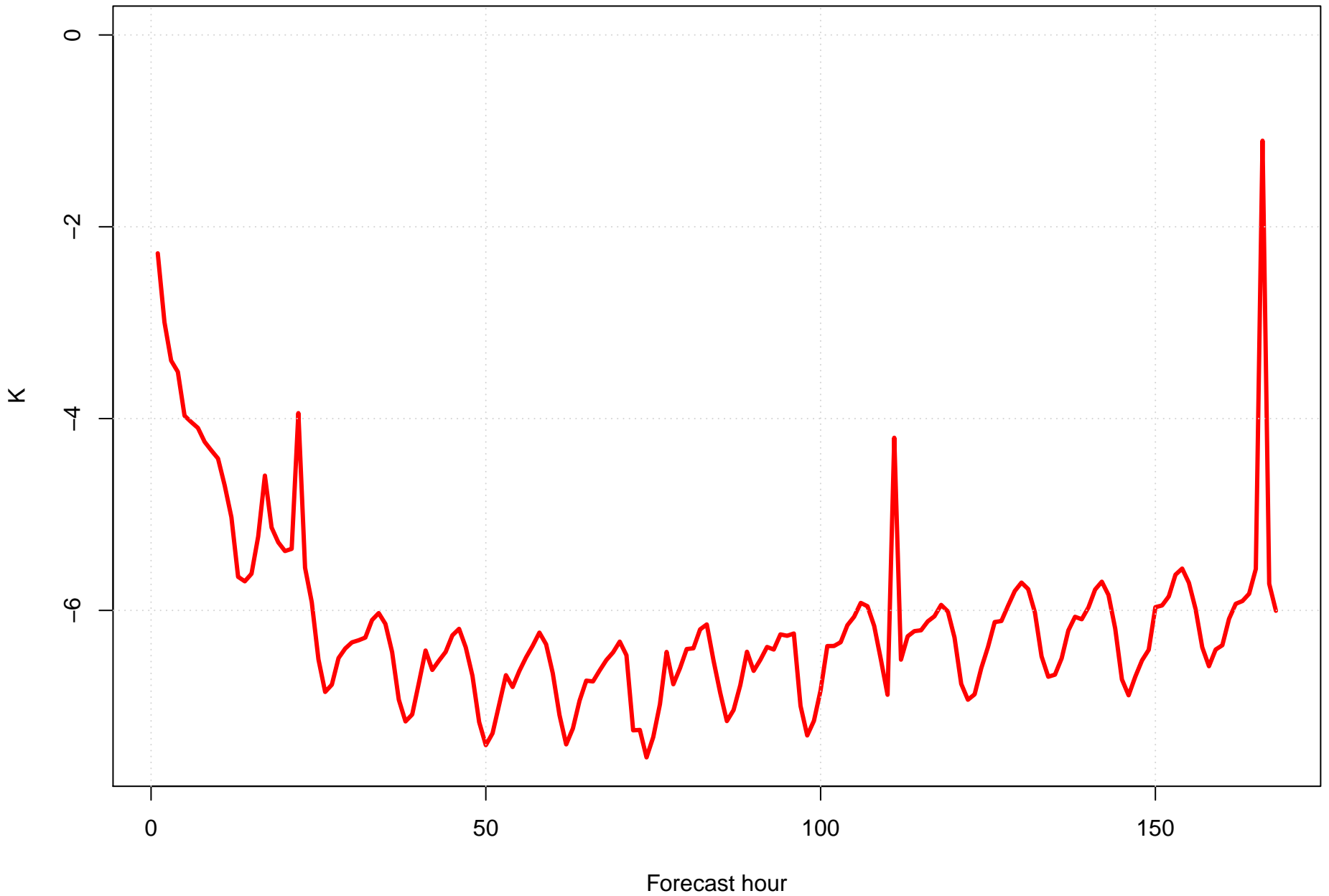
Surface temperature bias at KMRC by forecast hour



Surface temperature RMSE at KMRC by forecast hour



Surface dew point bias at KMRC by forecast hour



Surface dew point RMSE at KMRC by forecast hour

