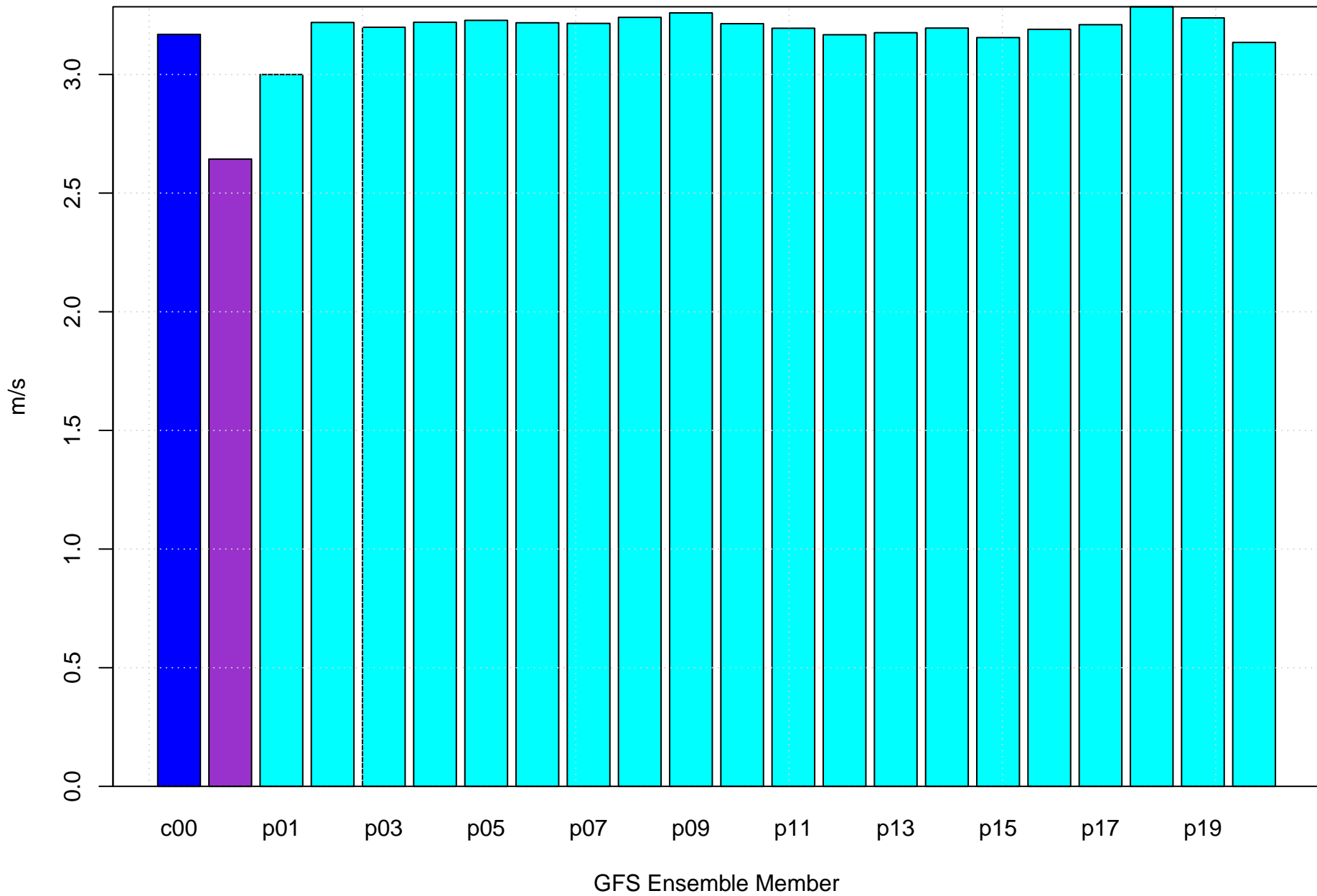
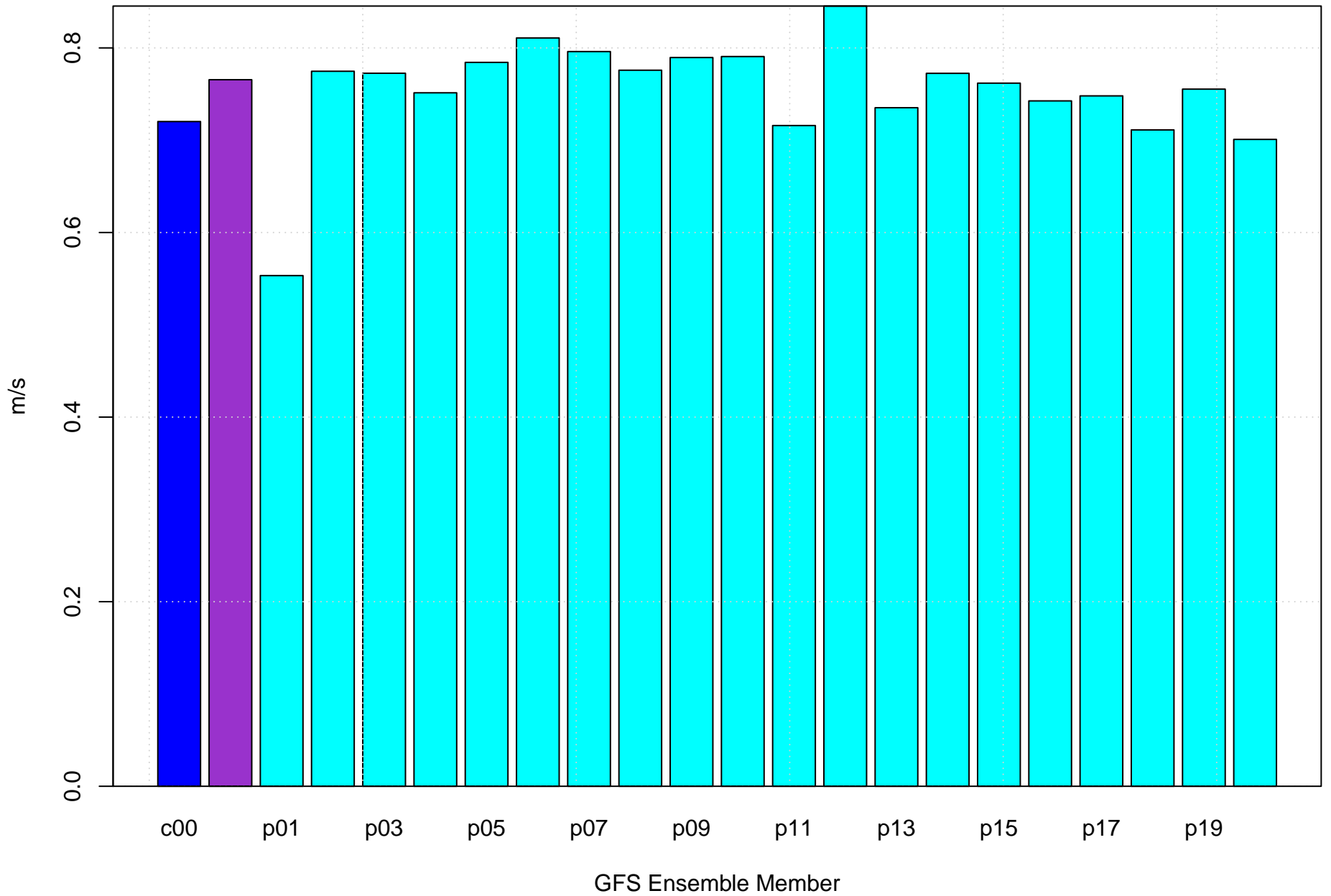


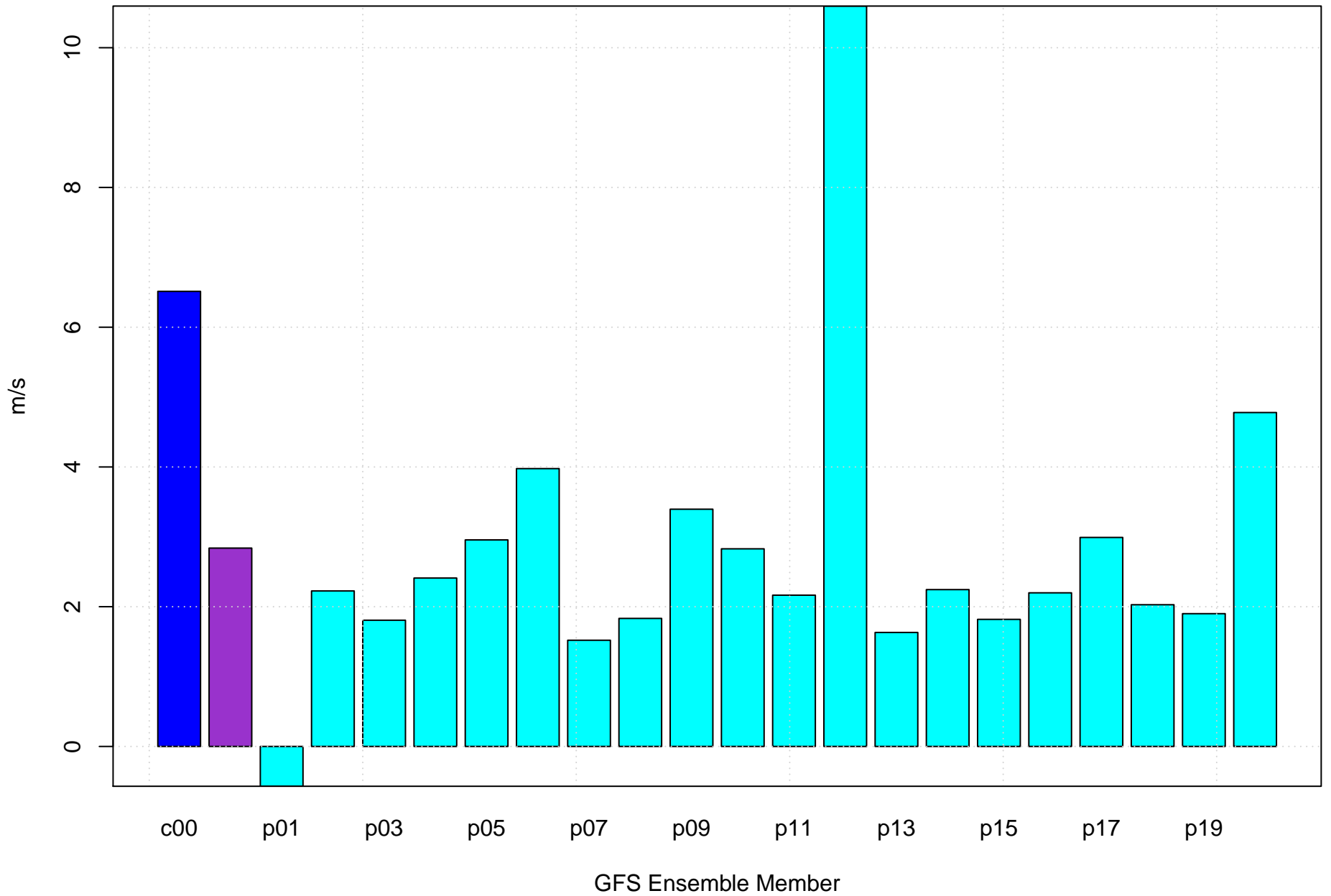
# Mean vector surface wind error KRIC



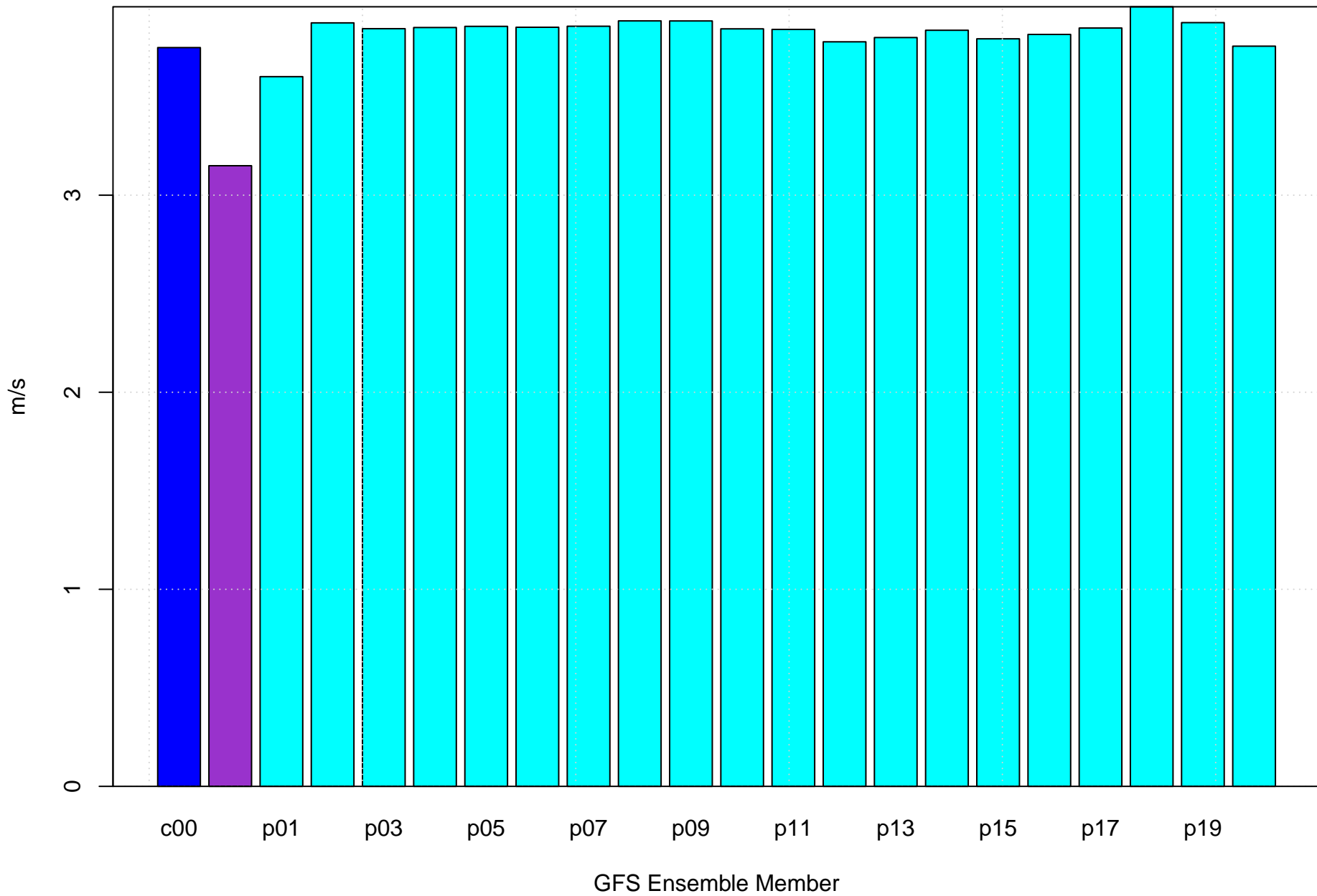
# Surface wind speed bias KRIC



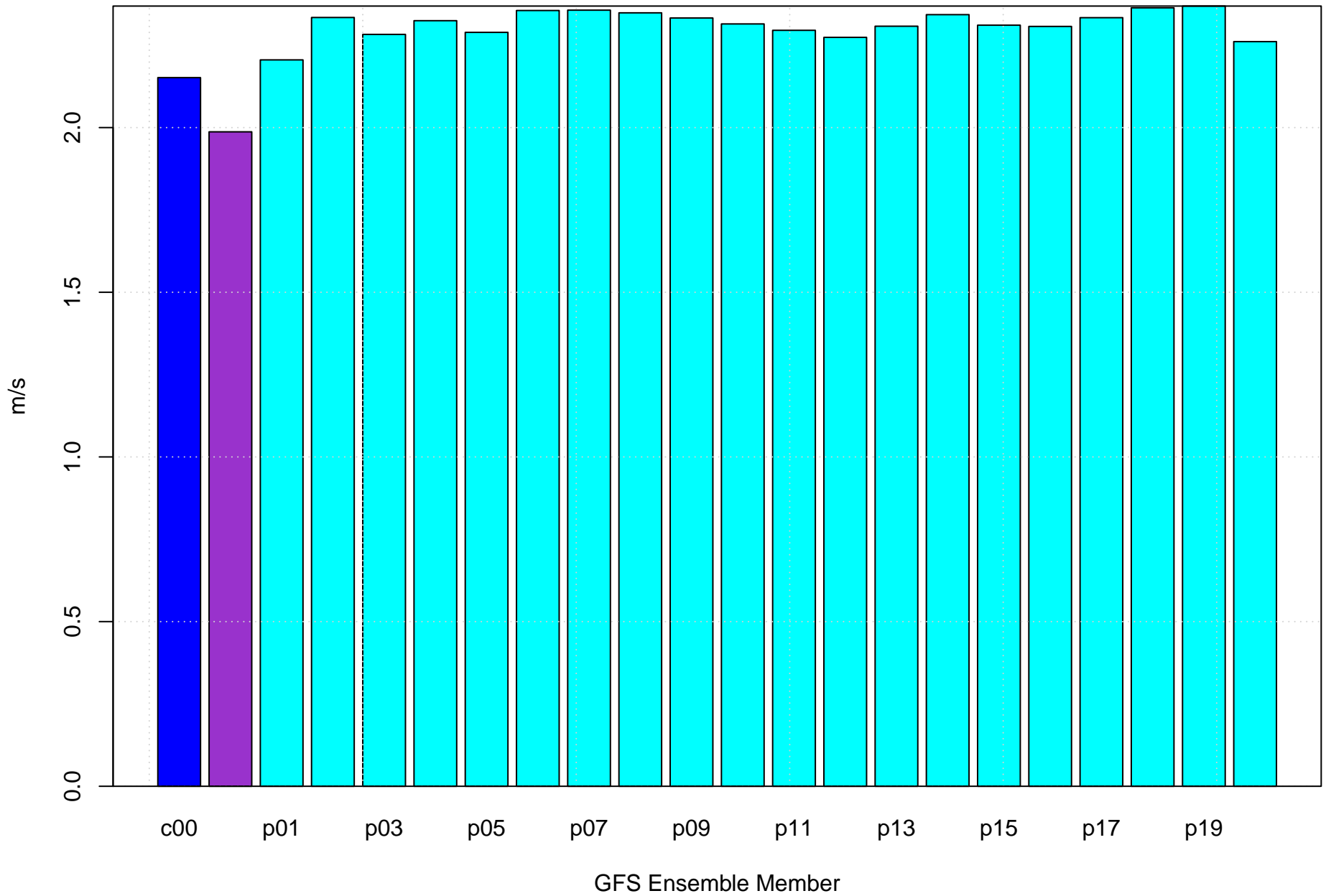
# Surface direction bias KRIC



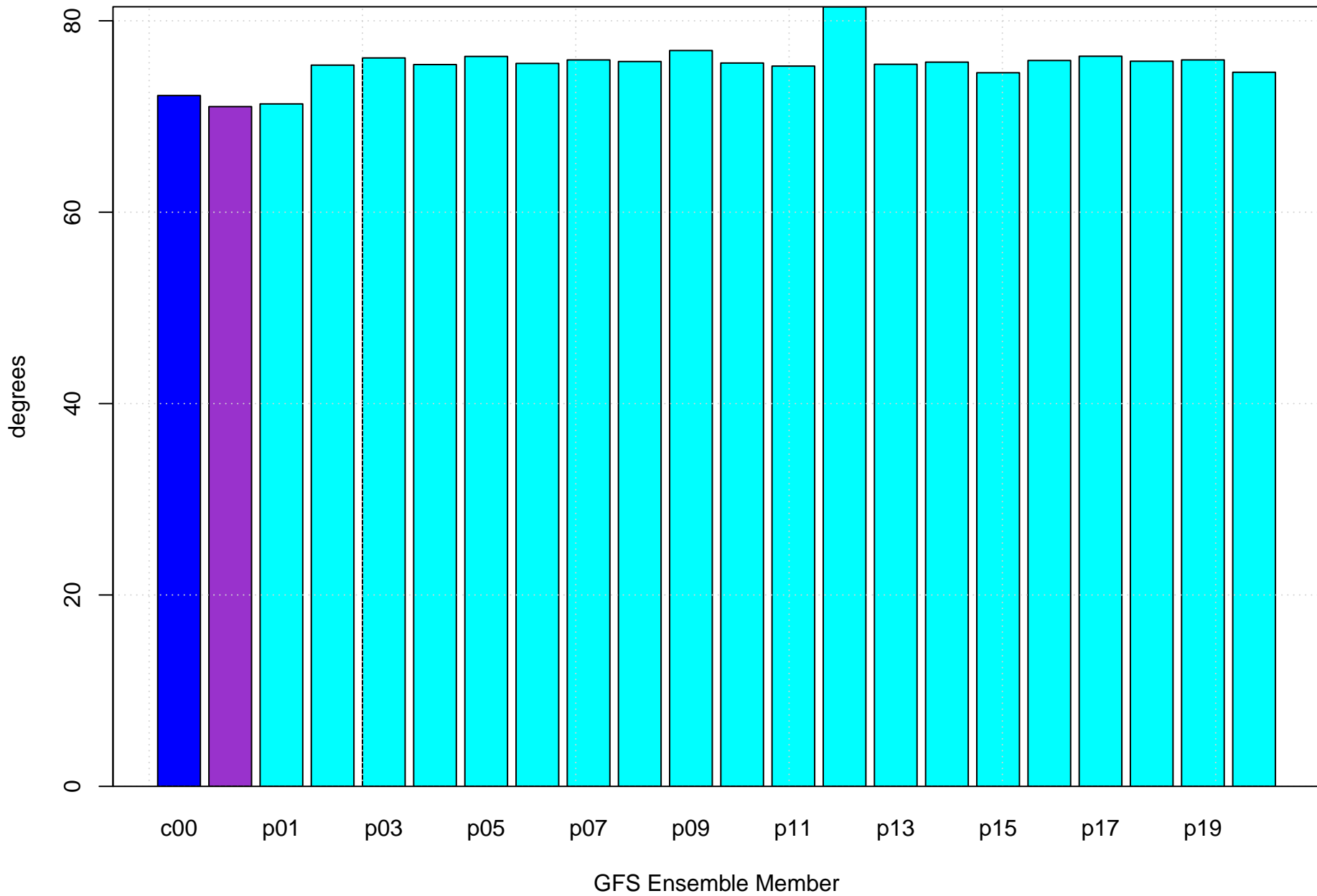
# Surface vector wind vector RMSE KRIC



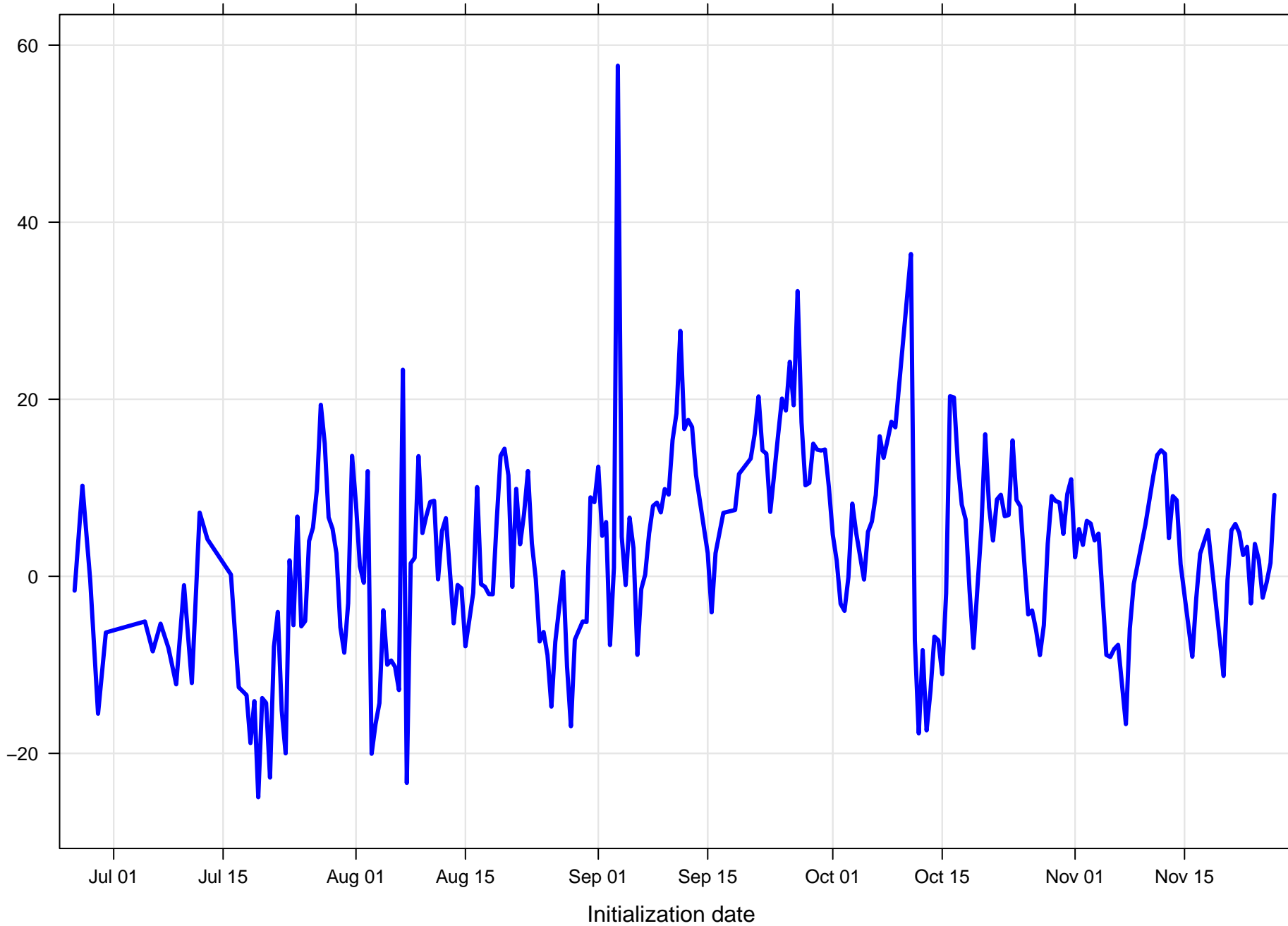
# Surface wind speed RMSE KRIC



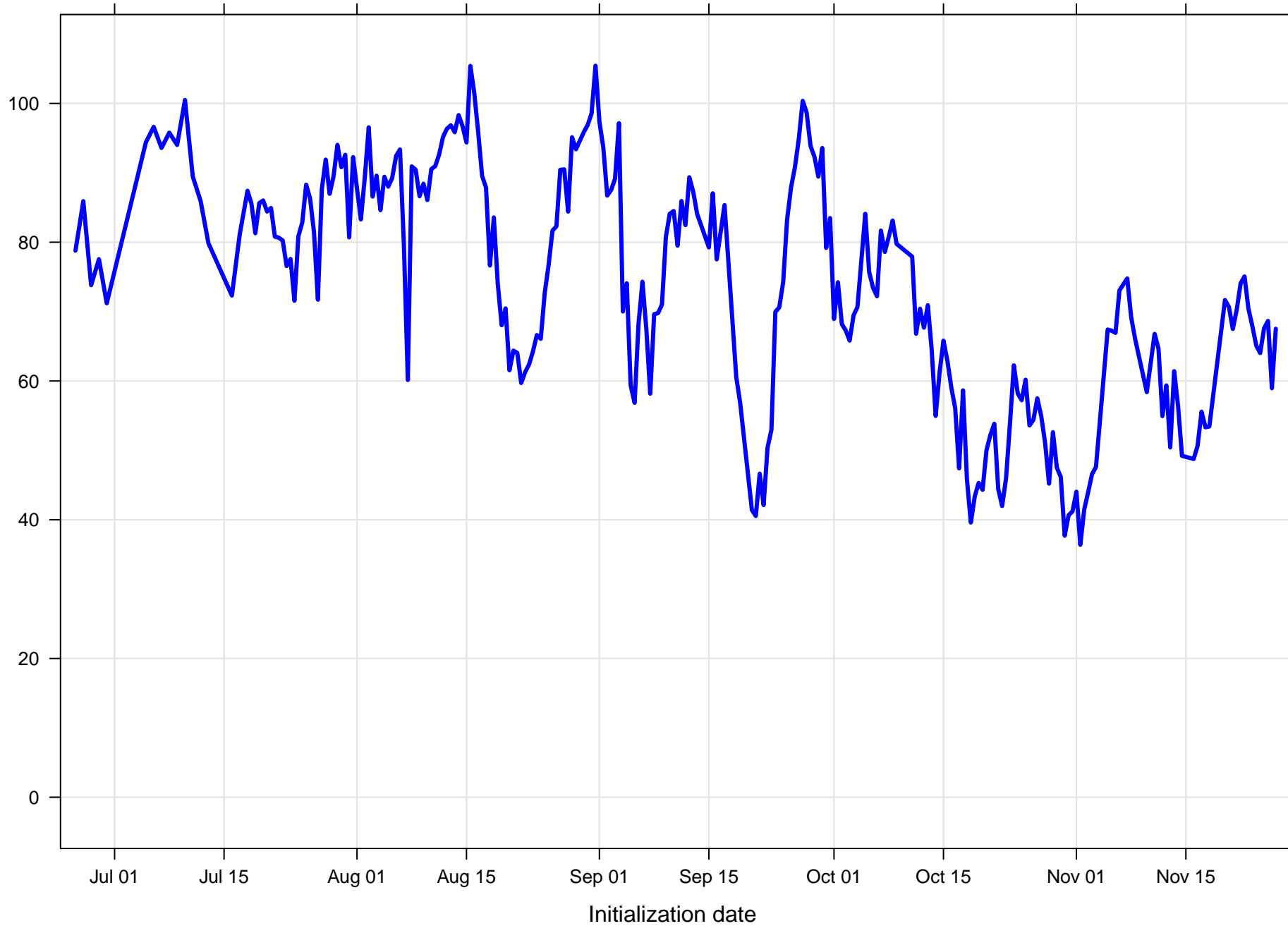
# Surface direction RMSE KRIC



Surface wind direction bias at KRIC all forecast hours and members

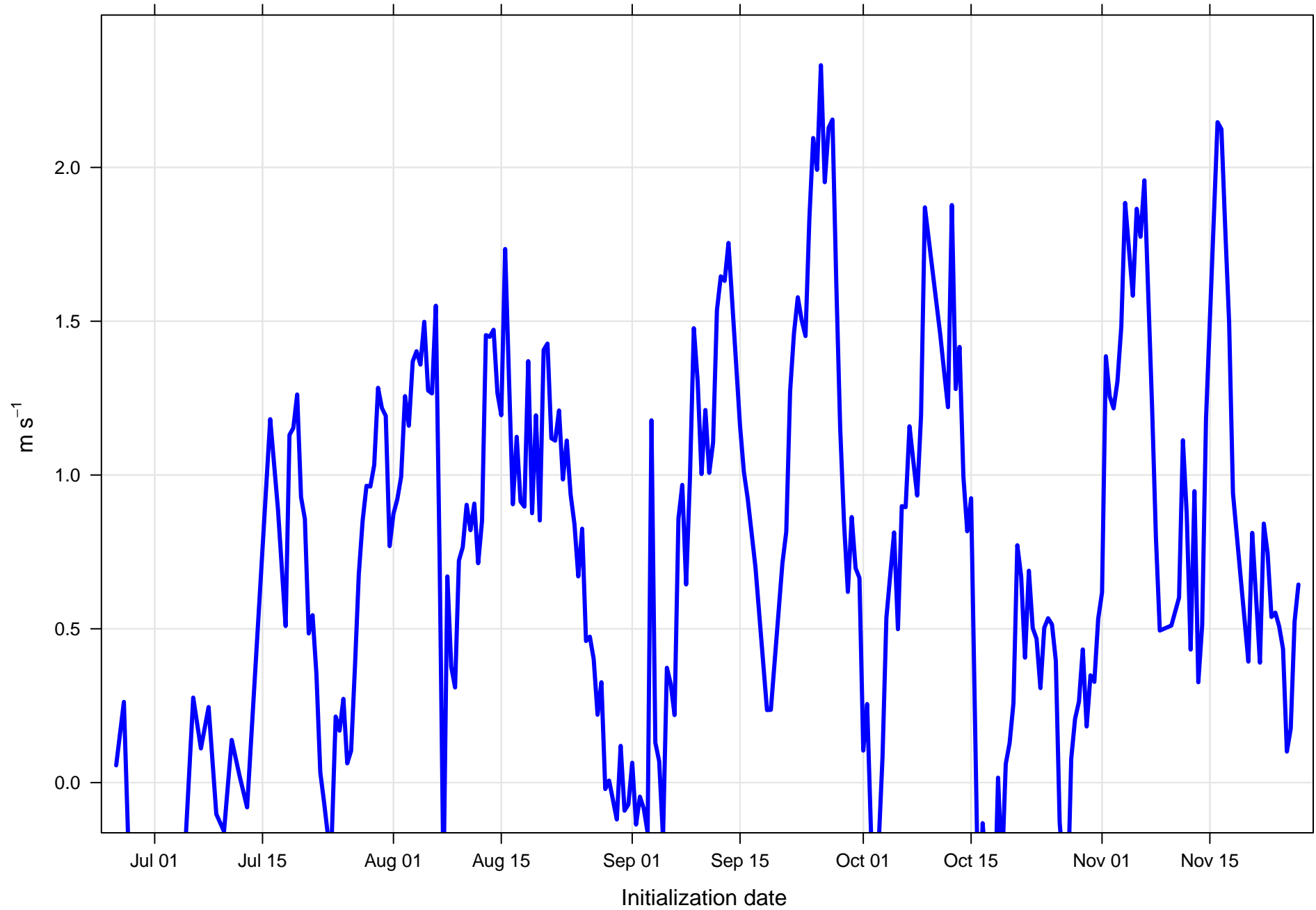


Surface wind direction RMSE at KRIC all forecast hours and members

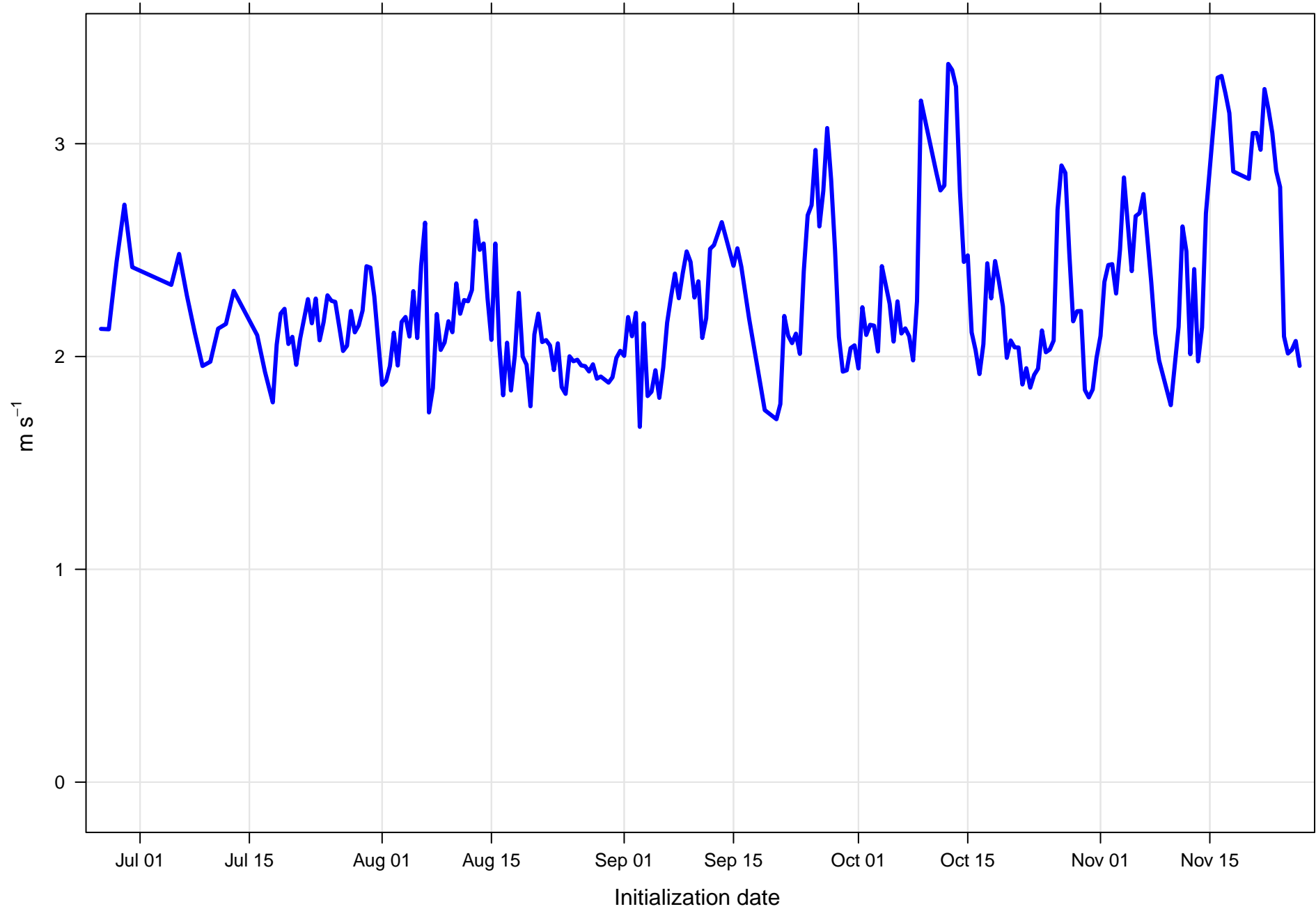




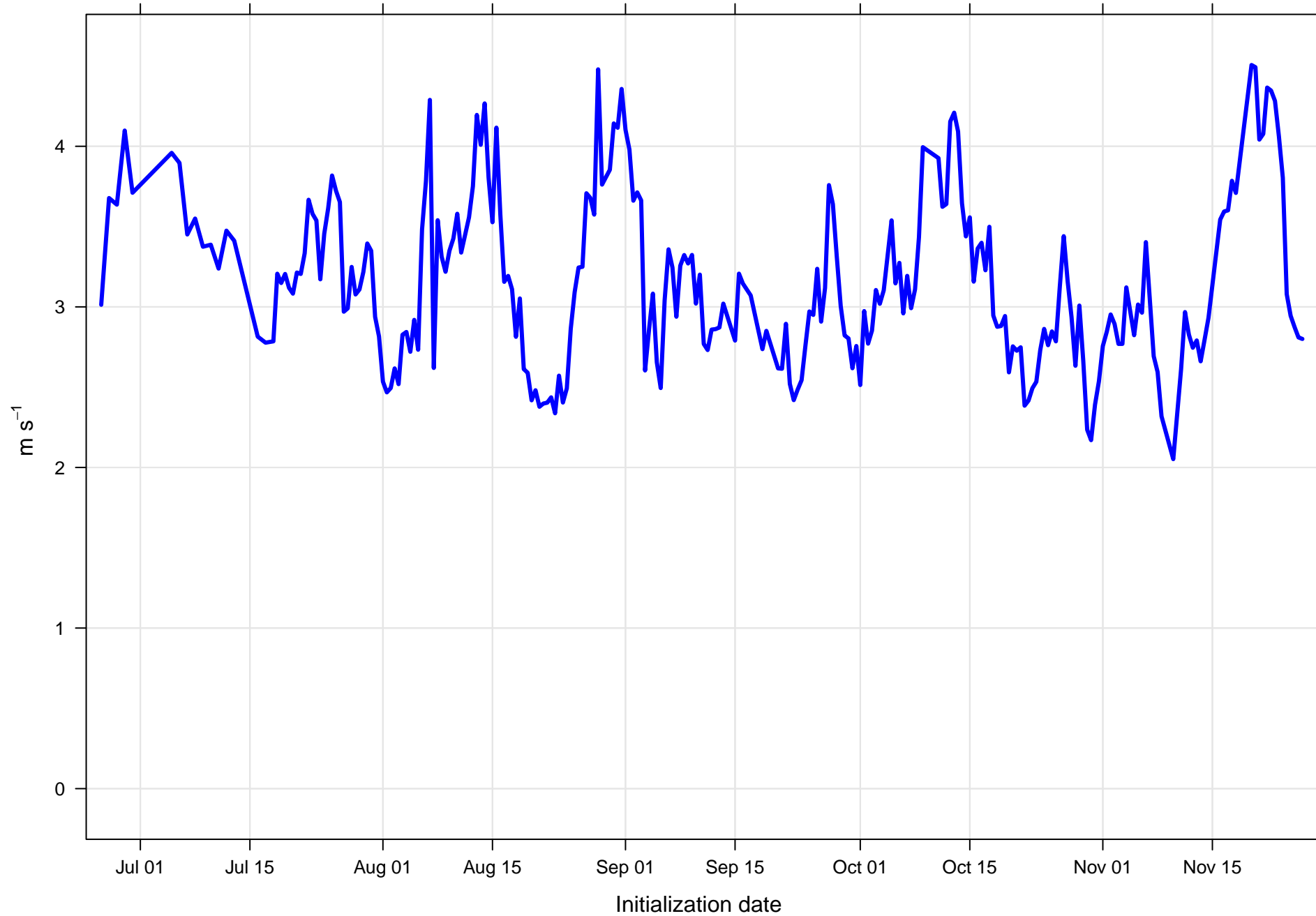
Surface wind speed bias at KRIC all forecast hours and members



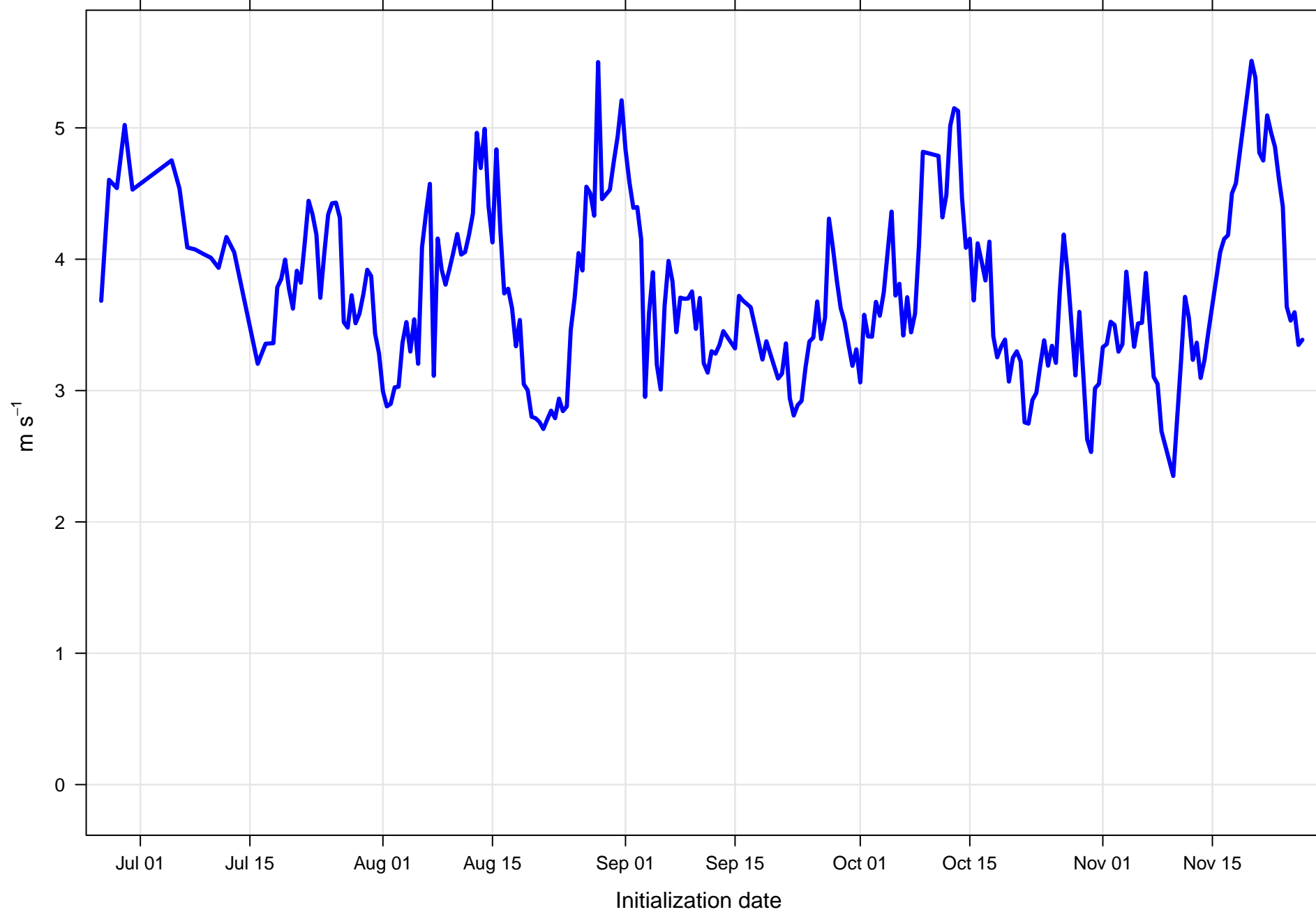
Surface wind speed RMSE at KRIC all forecast hours and members



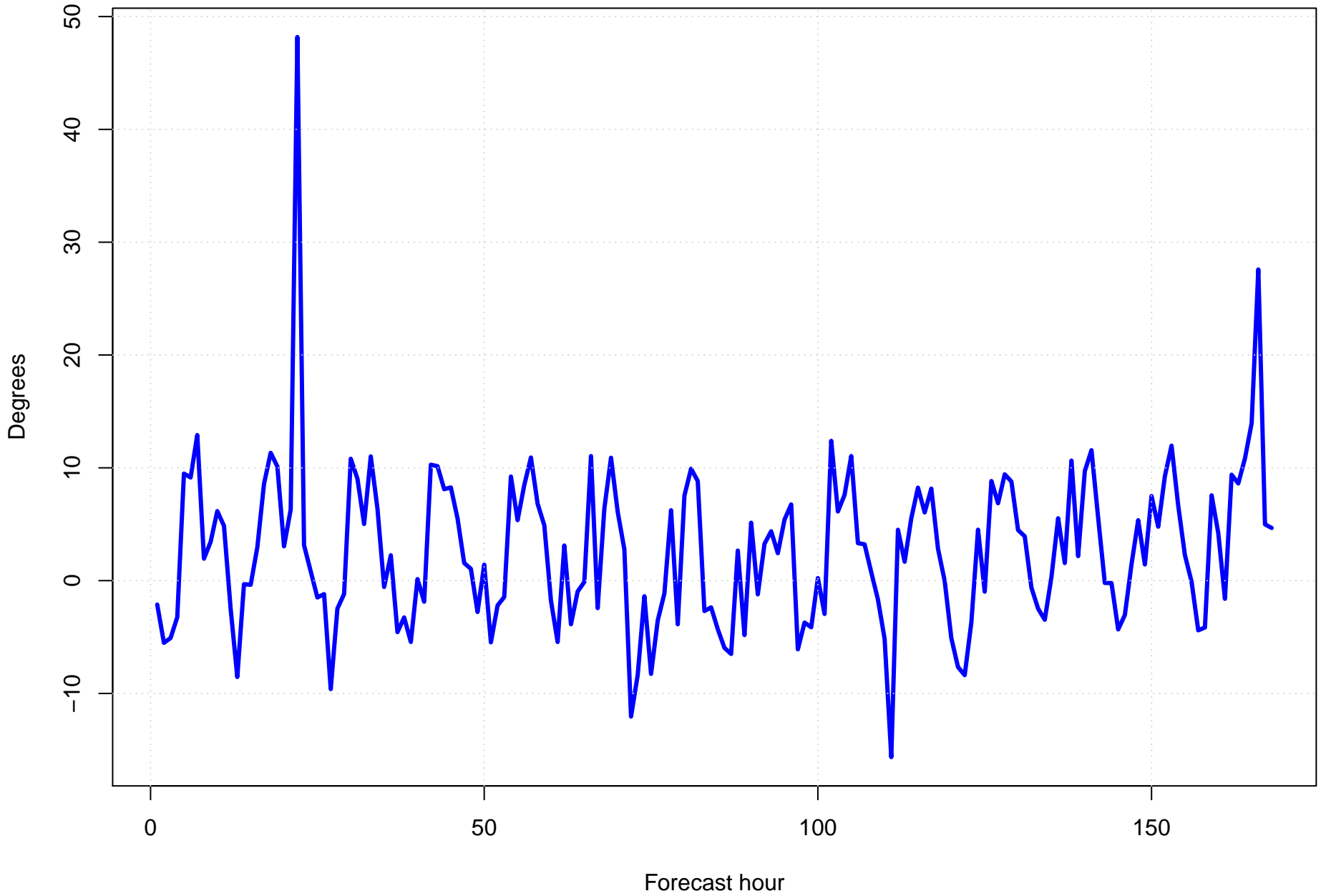
Surface vector wind mean error KRIC all forecast hours and members



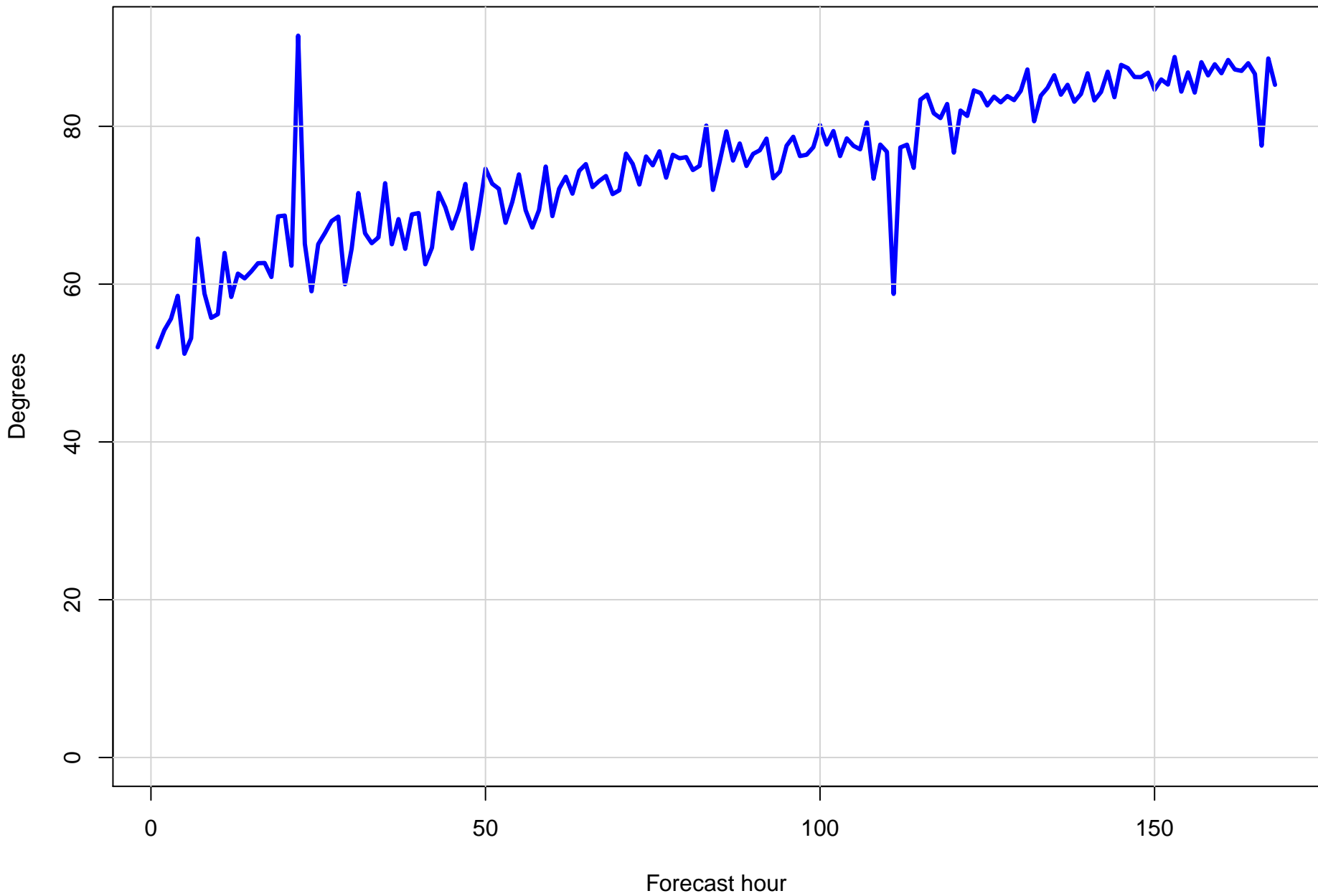
Surface vector wind RMSE at KRIC all forecast hours and members



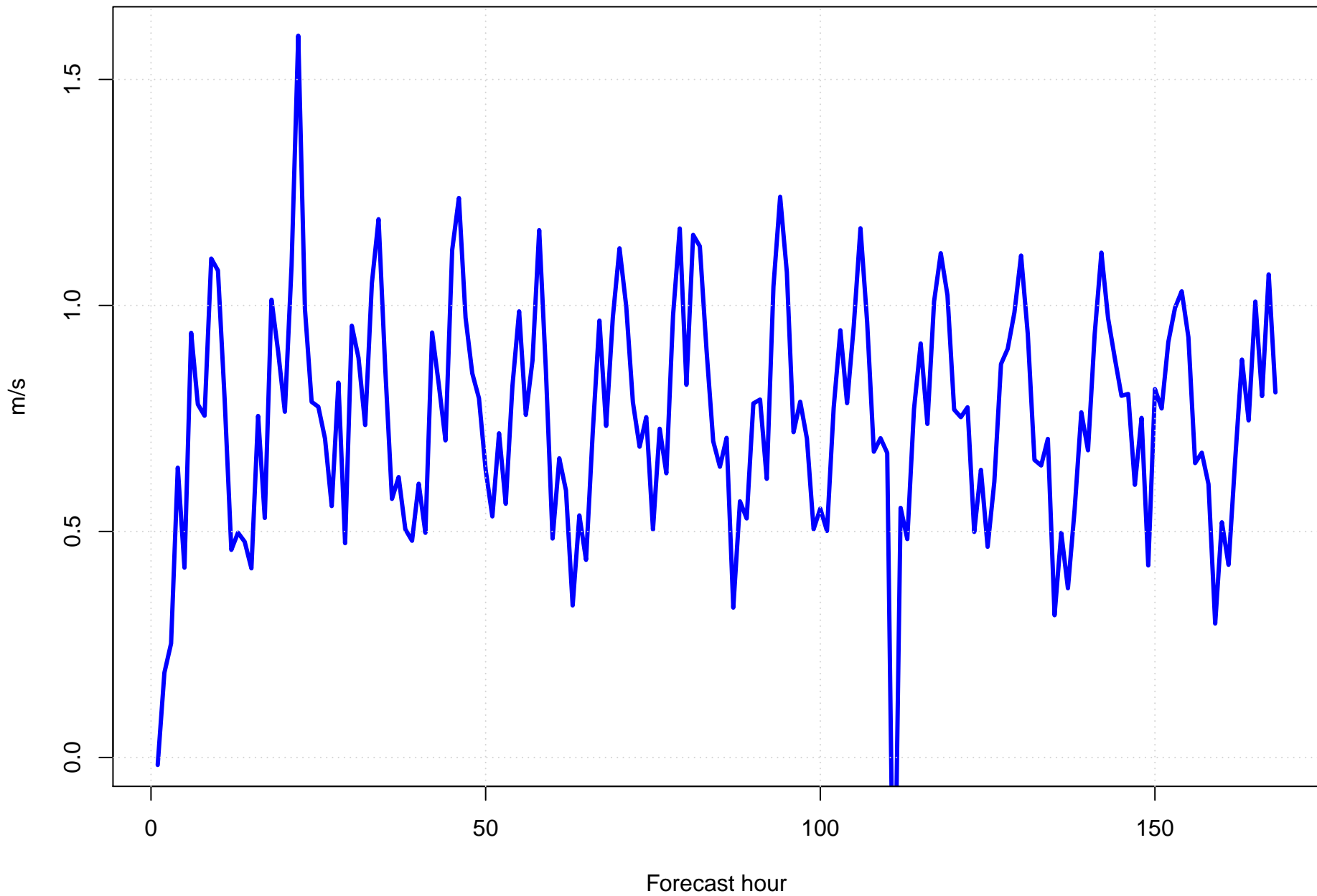
Surface wind direction bias at KRIC by forecast hour



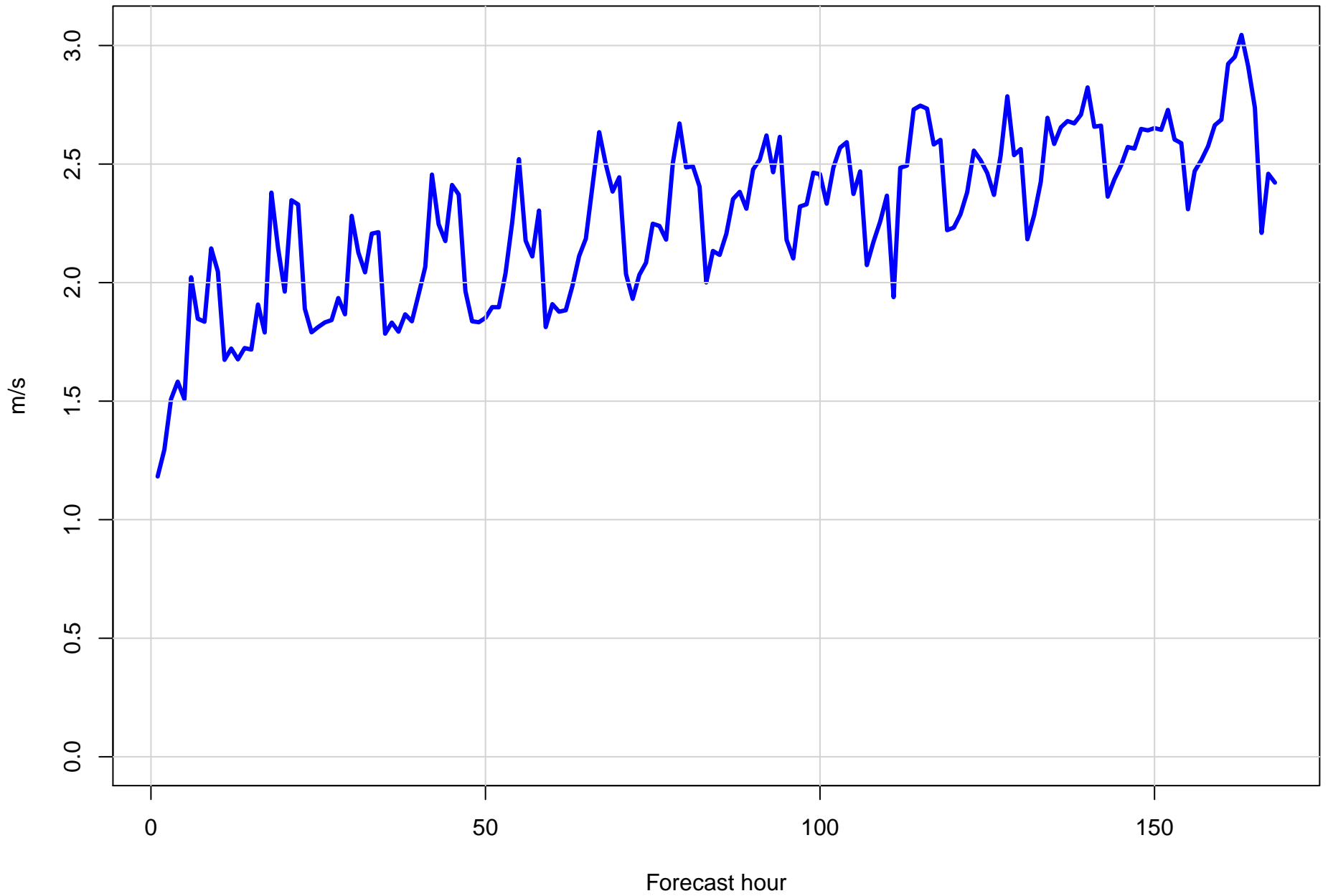
Surface wind direction RMSE at KRIC by forecast hour



Surface wind speed bias at KRIC by forecast hour

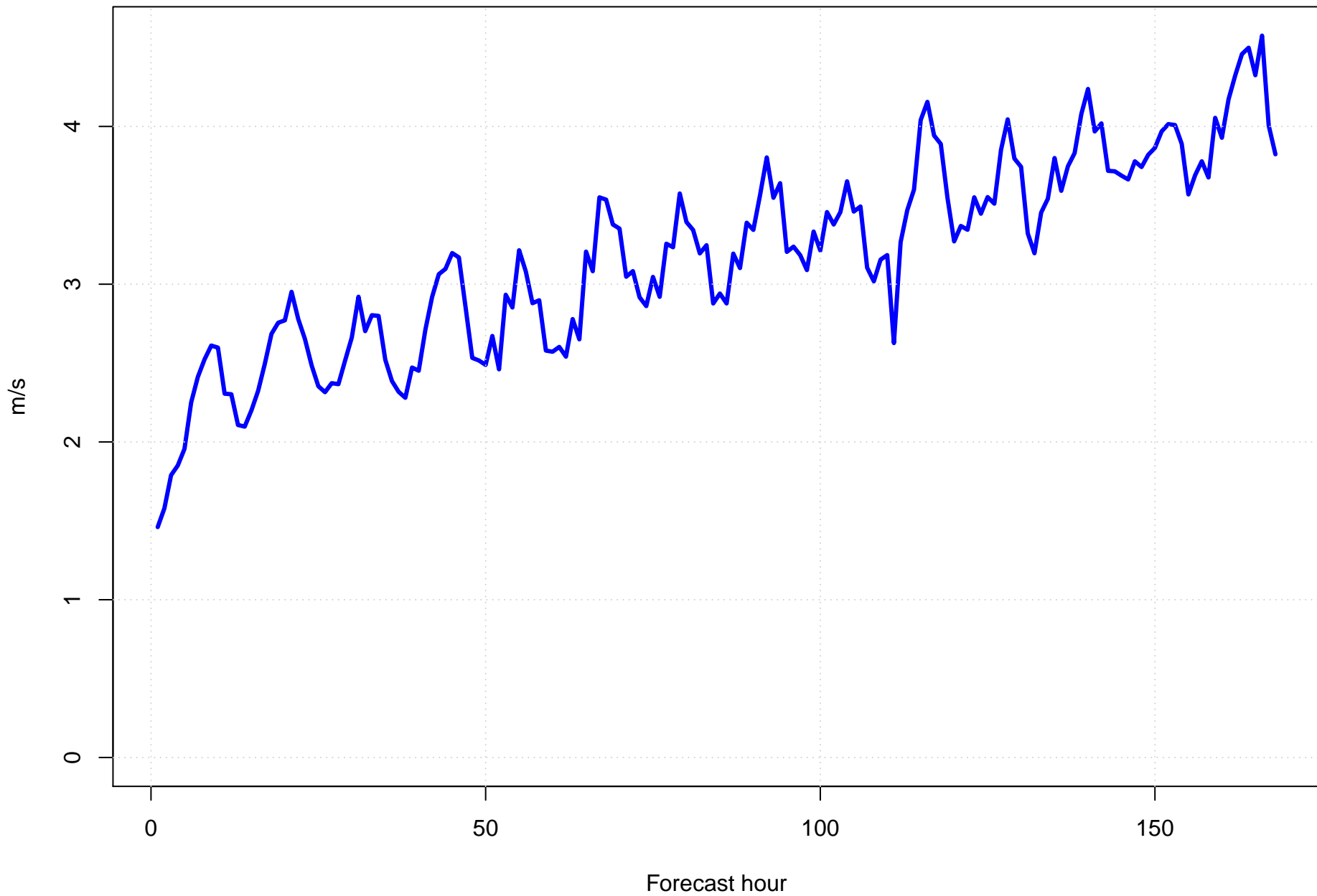


Surface wind speed RMSE at KRIC by forecast hour

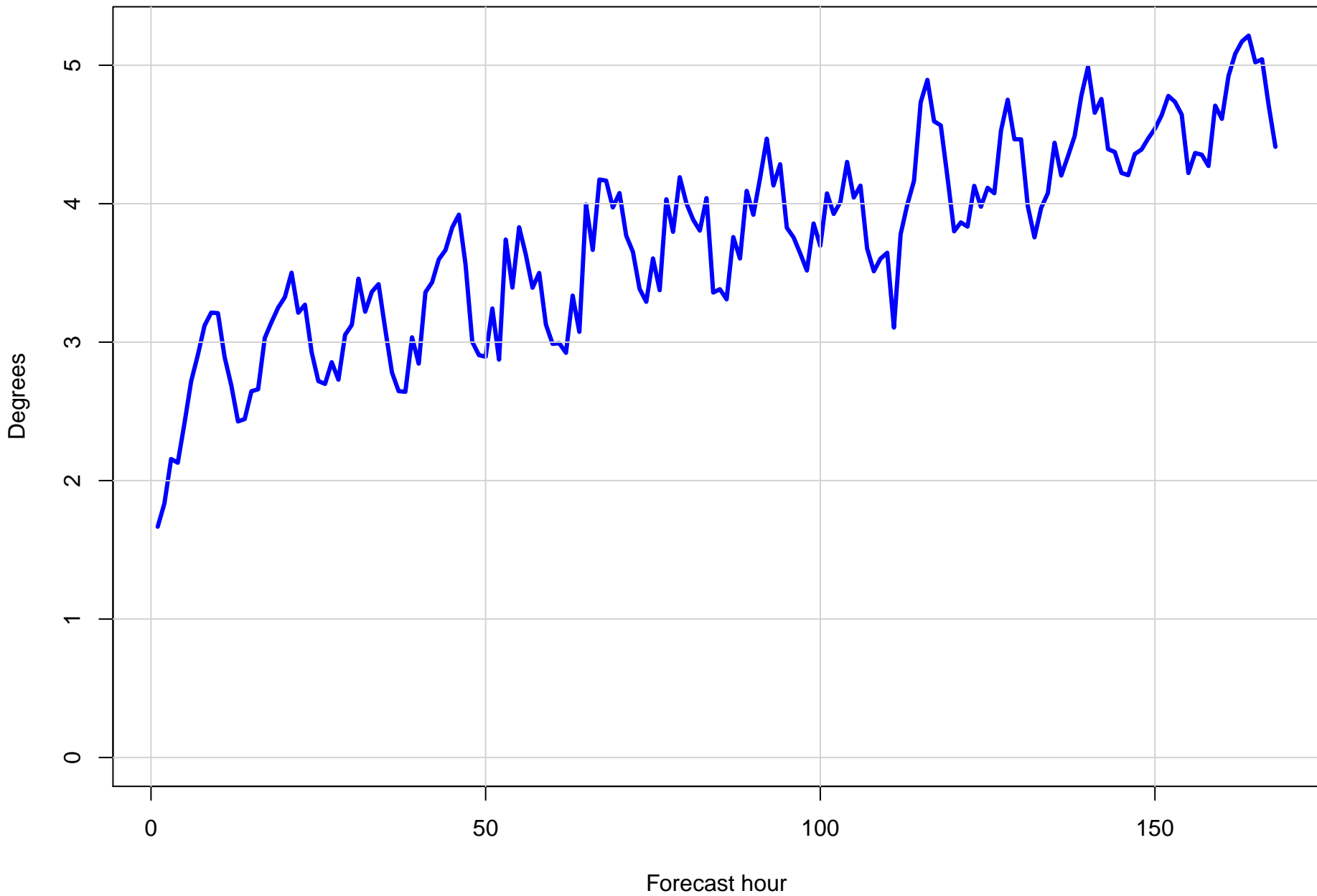




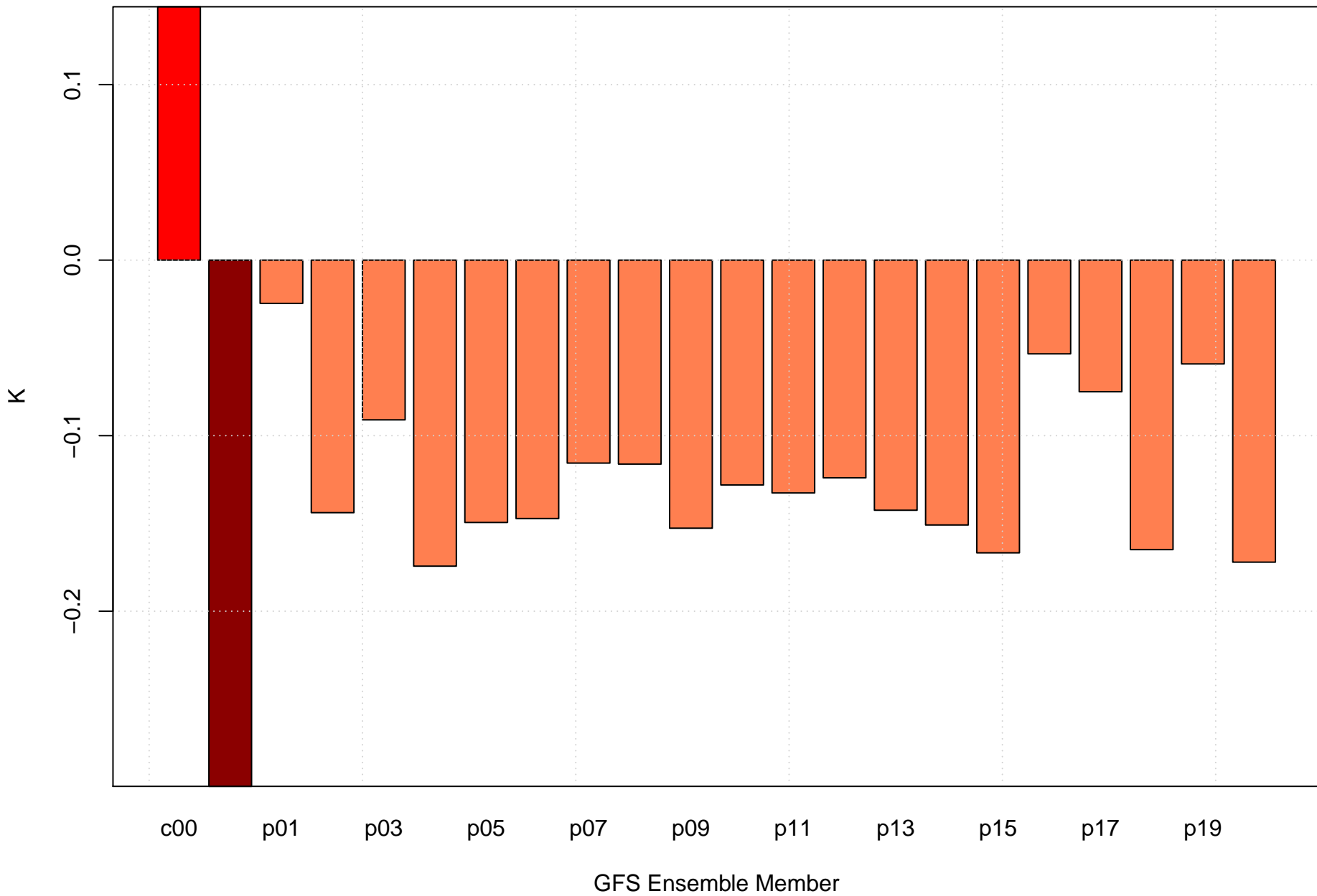
Surface vector wind error at KRIC by forecast hour



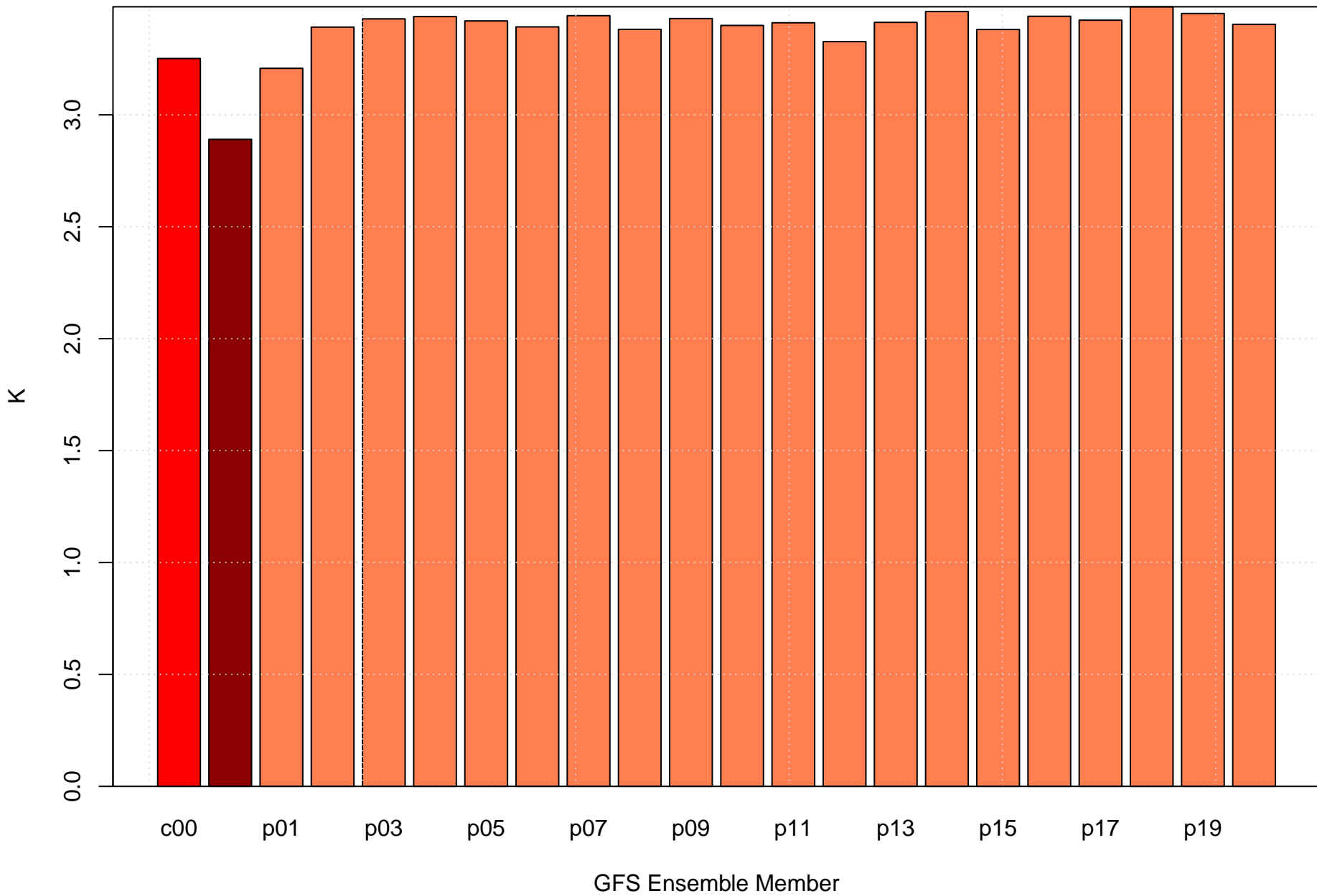
Surface vector wind RMSE at KRIC by forecast hour



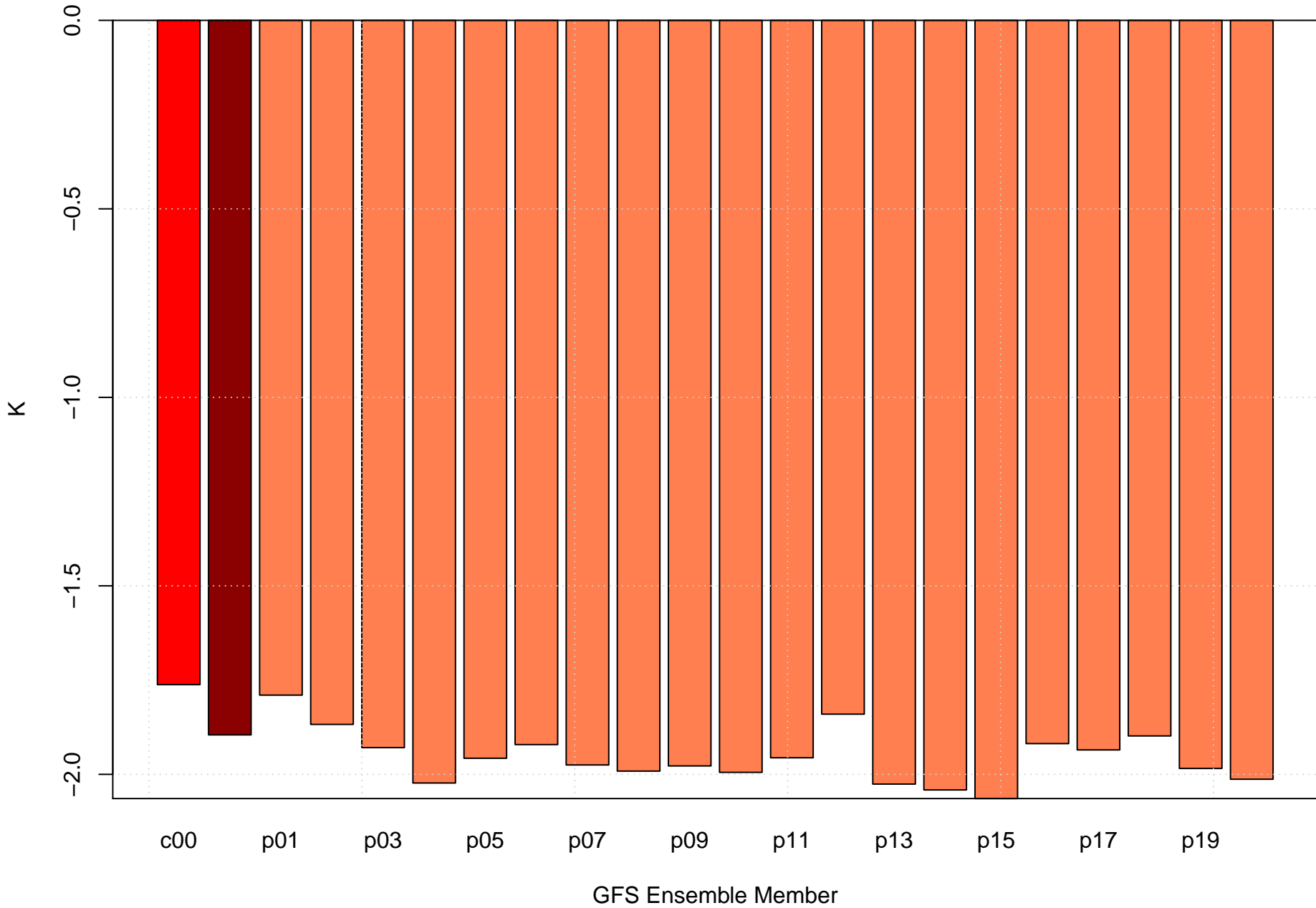
# Surface temperature bias at KRIC



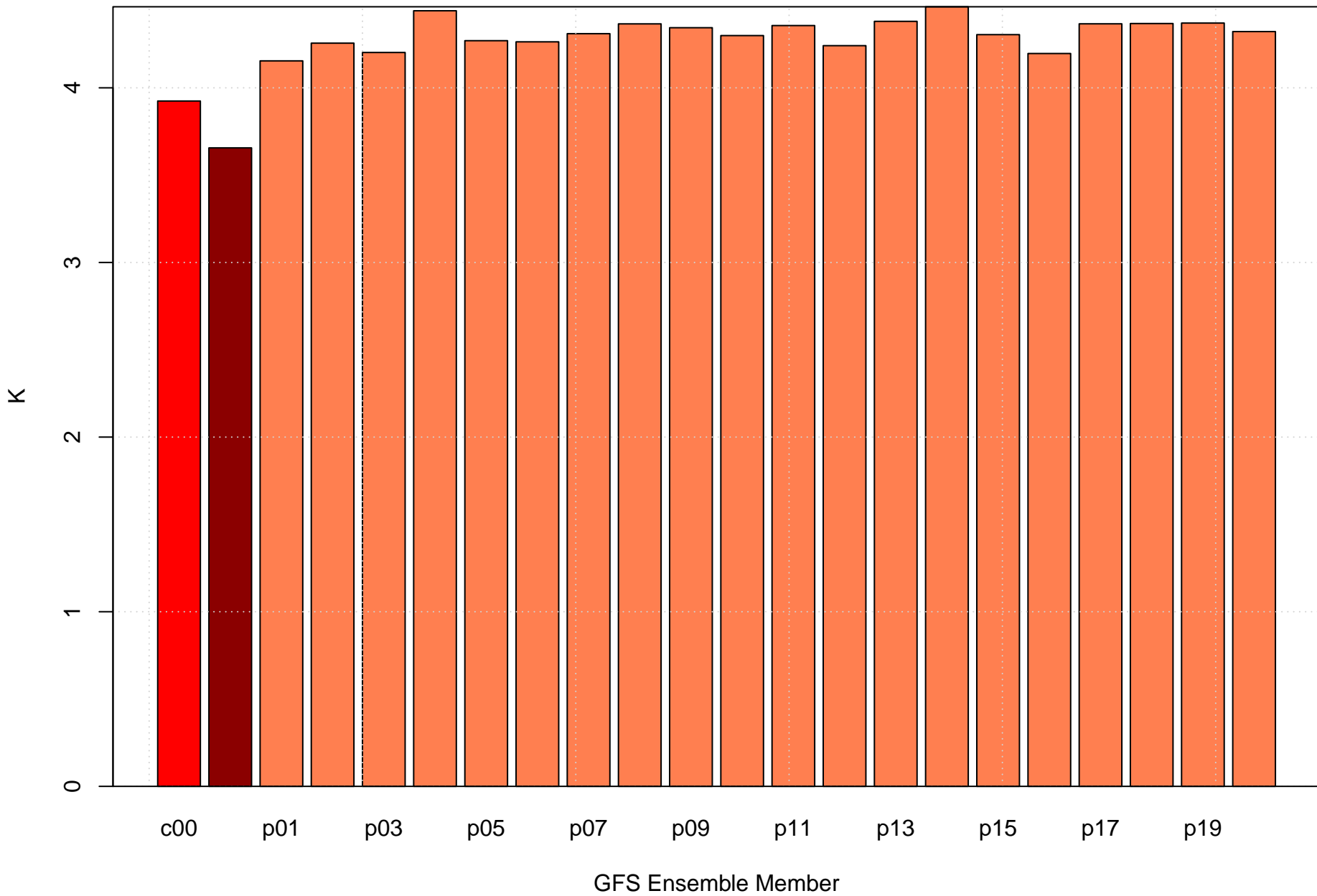
# Surface temperature RMSE at KRIC



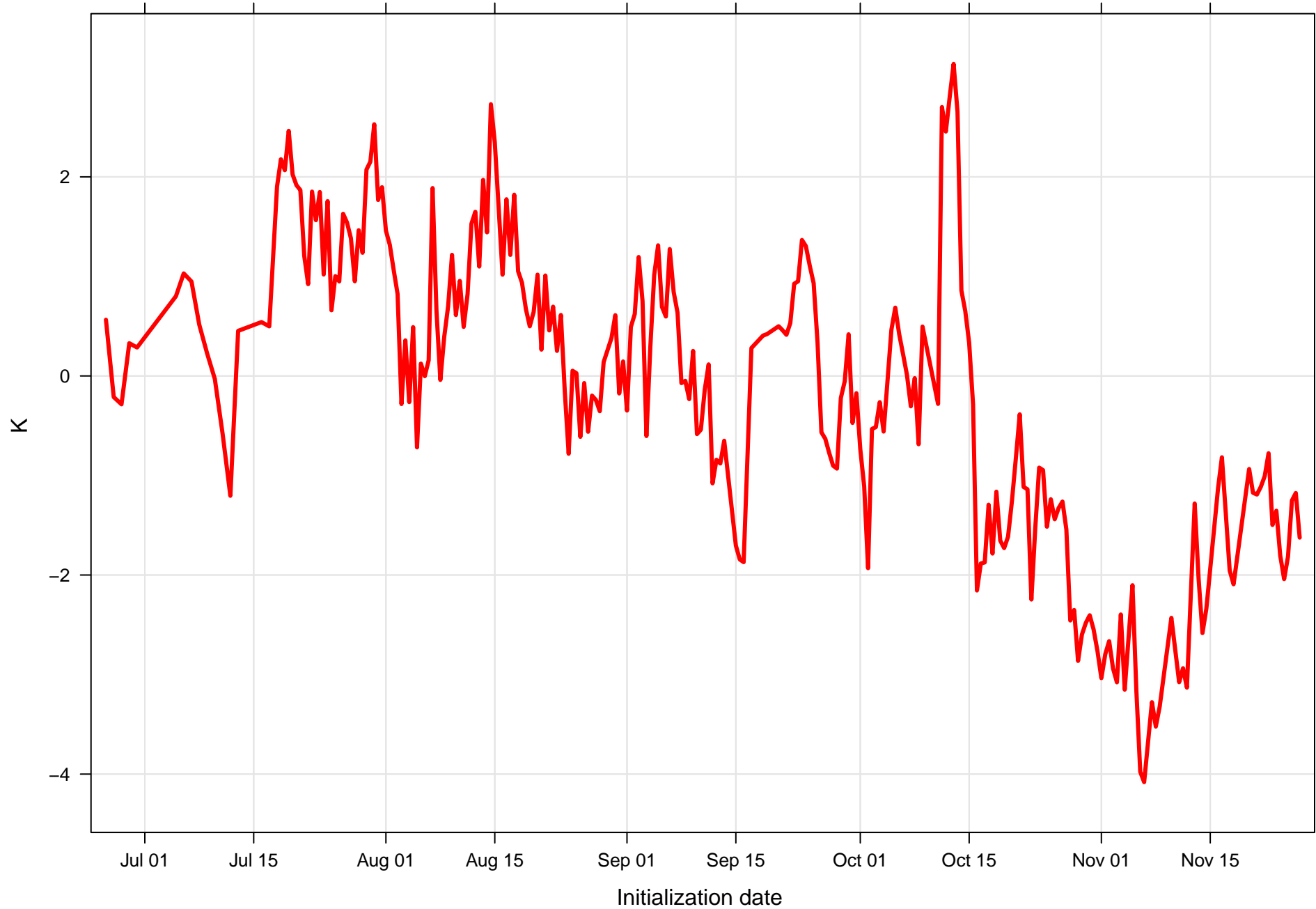
# Surface dew point bias at KRIC



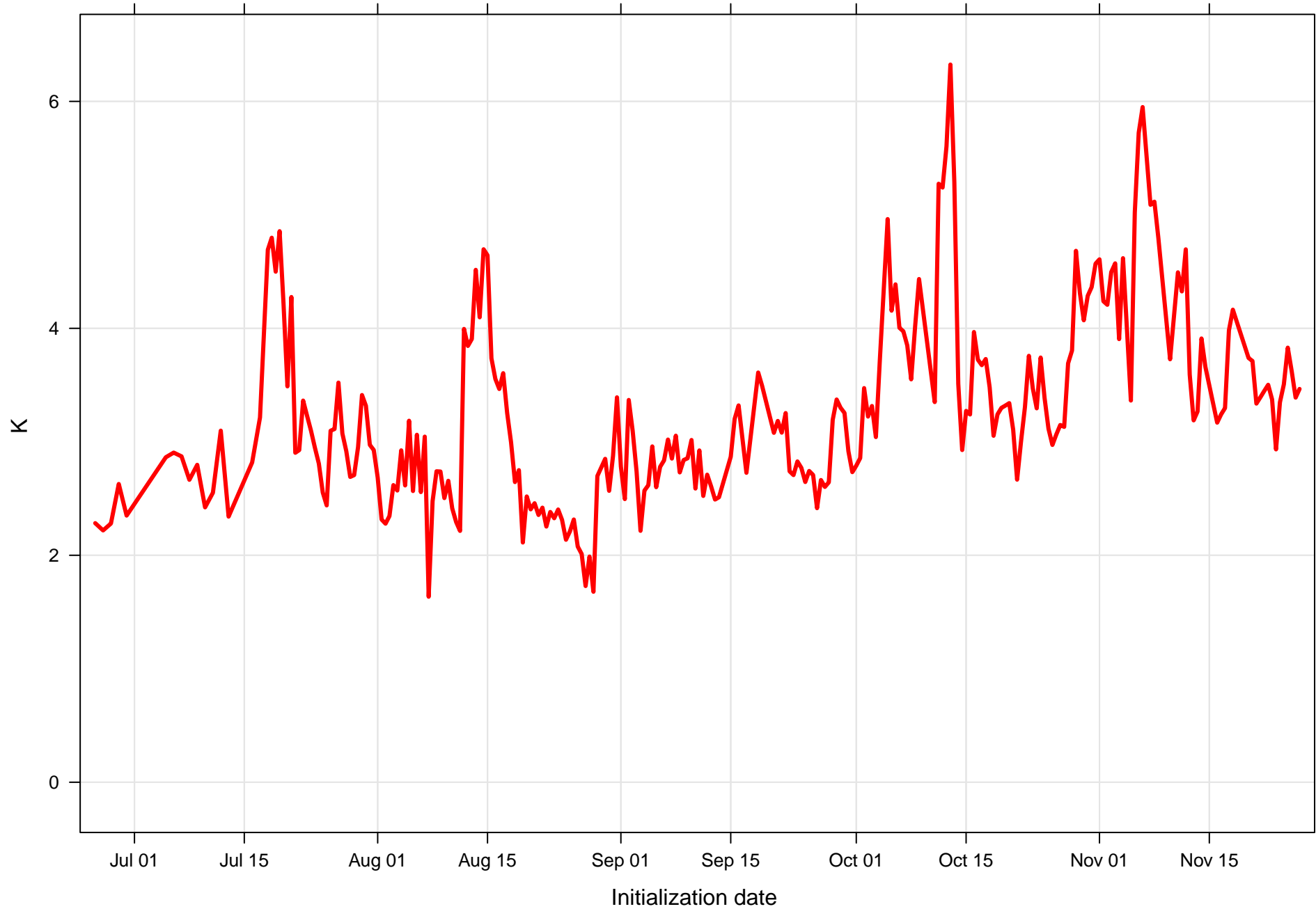
# Surface dew point RMSE at KRIC



Surface temperature bias at KRIC all forecast hours and members

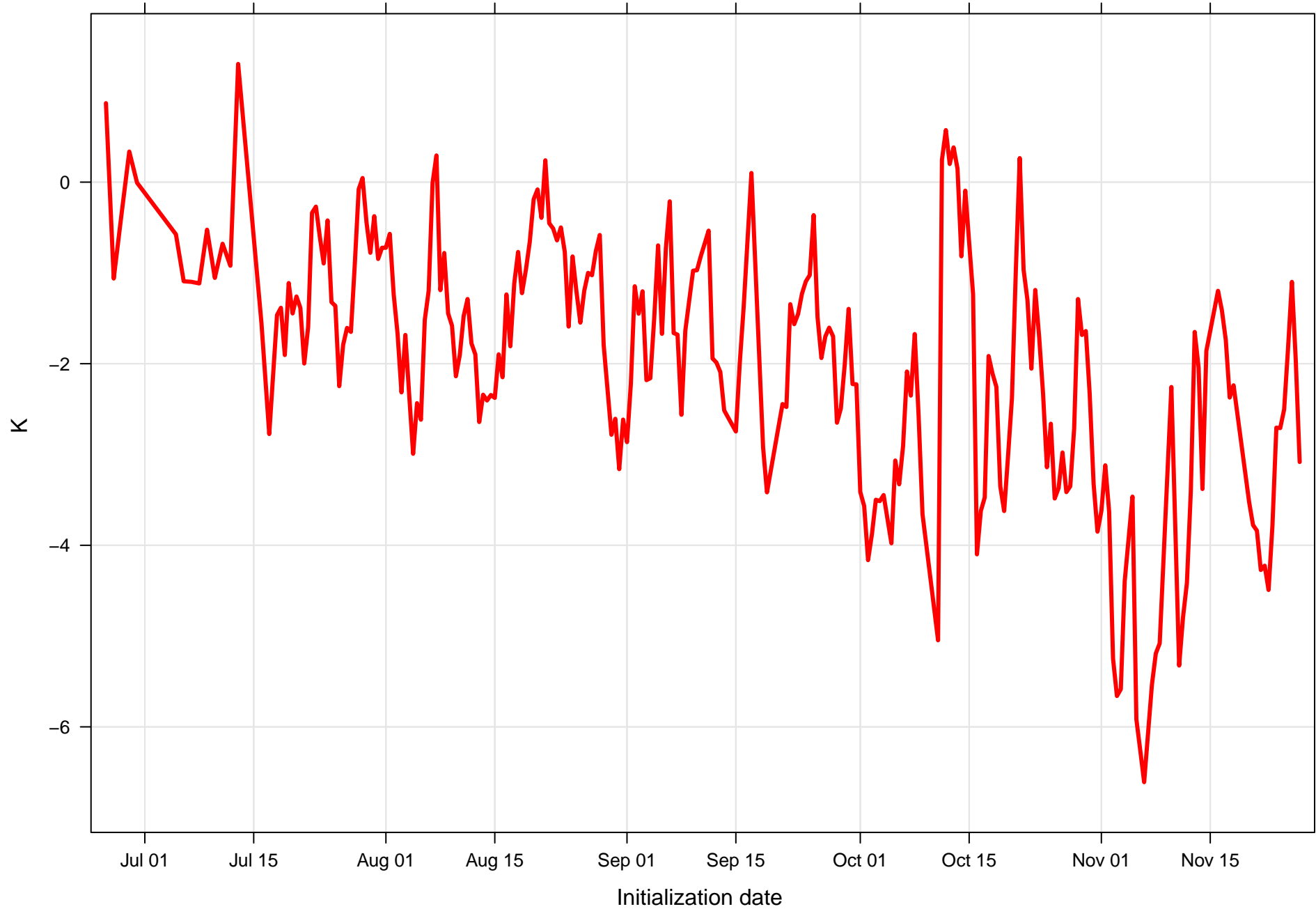


Surface temperature RMSE at KRIC all forecast hours and members

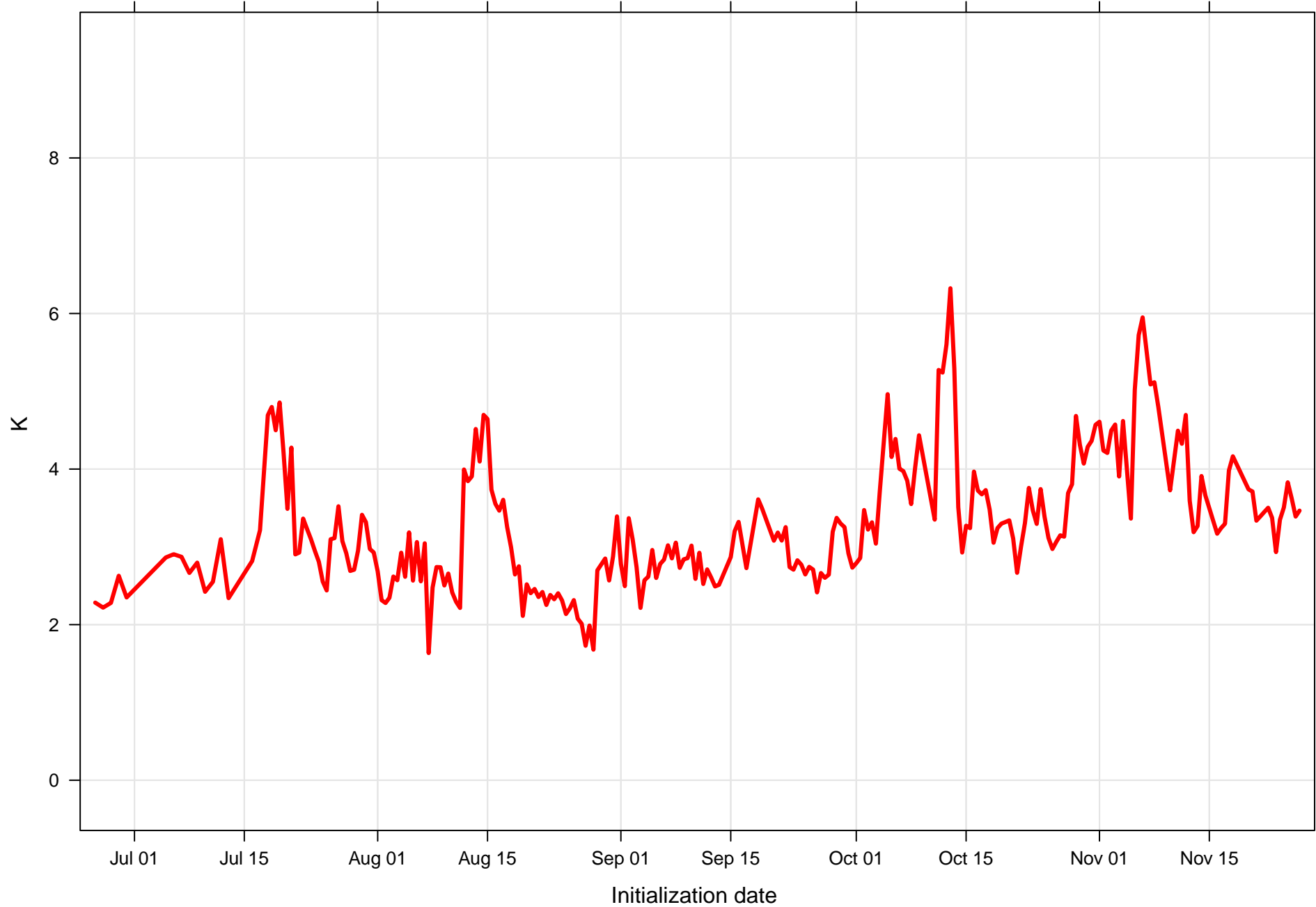




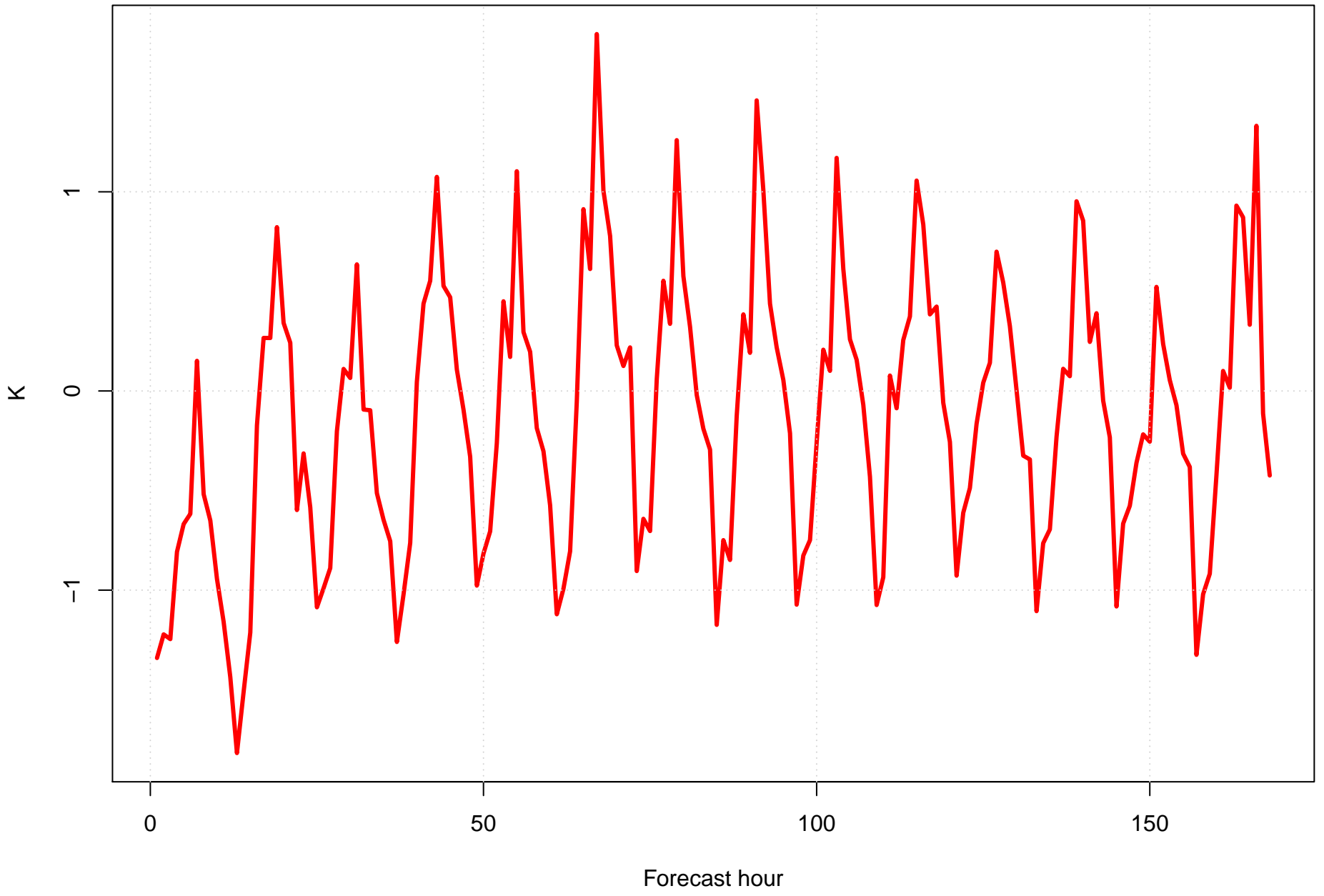
Surface dew point bias at KRIC all forecast hours and members



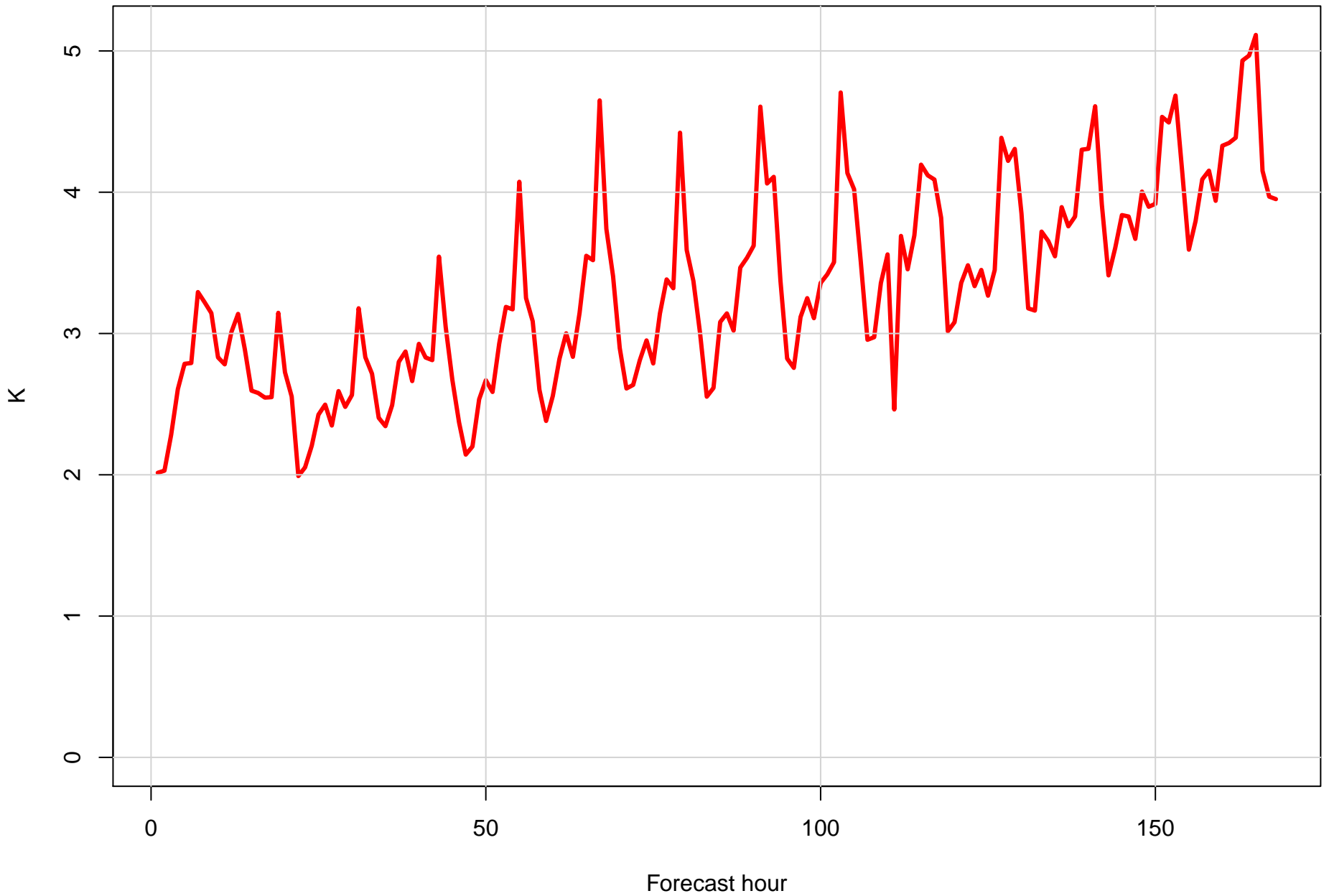
Surface dew point RMSE at KRIC all forecast hours and members



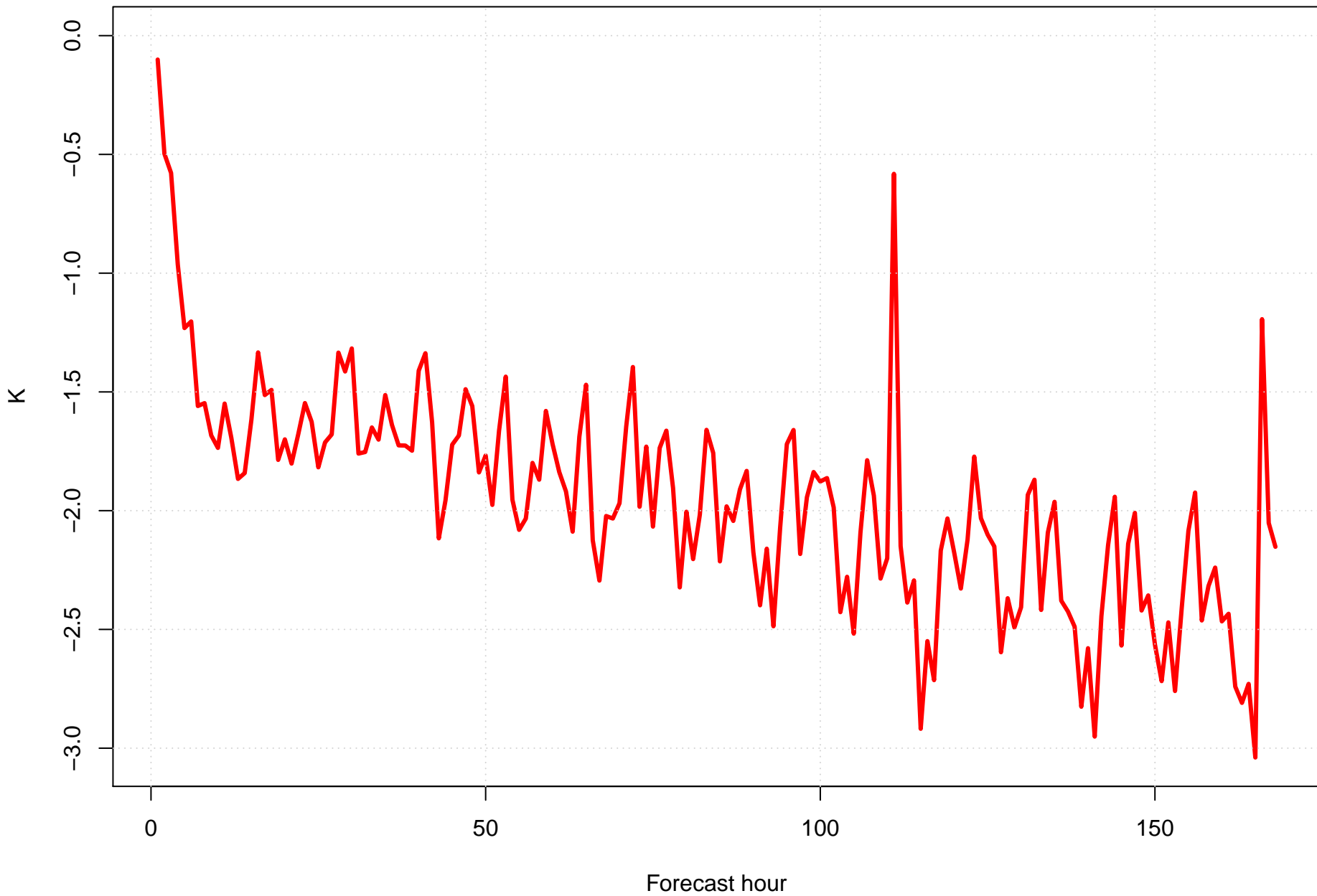
Surface temperature bias at KRIC by forecast hour



Surface temperature RMSE at KRIC by forecast hour



Surface dew point bias at KRIC by forecast hour



Surface dew point RMSE at KRIC by forecast hour

